

# Public Notice

U.S. Army Corps of Engineers, Norfolk District

November 14, 2016

CENAO-WRR-N  
NAO-2015-1695

## FEDERAL PUBLIC NOTICE

The District Commander has received a joint application for Federal and State permits as described below:

### APPLICANT

Loudoun County  
Department of Transportation and Capital Infrastructure  
Attn: Mr. Joe Kroboth  
101 Blue Seal Drive, Suite 102  
Leesburg, VA 20177

WATERWAY AND LOCATION OF THE PROPOSED WORK: The project is located on and adjacent to Belmont Ridge Road (Route 659) between Truro Parish Drive and Croson Lane in Loudoun County, Virginia. The work will occur in tributaries to Goose Creek.

PROPOSED WORK AND PURPOSE: The project consists of the discharge of fill material into waters of the United States associated with the construction of roadway improvements at the subject location. The project is called Belmont Ridge Road Widening (CRCP-2015-0004). Approximately 0.682-acre palustrine forested wetlands (PFO), 1.187-acres palustrine emergent wetlands (PEM) and 638 linear feet of stream beds will be permanently impacted by the proposed project. An additional 0.042 PFO, 0.058 PEM and 122 linear feet of stream beds will be temporarily impacted. The work includes roadway reconstruction and widening, construction of stormwater facilities, utility relocation and construction of multi-use paths. Compensatory mitigation will be provided by the purchase of wetland and stream credits.

In addition to the required Department of the Army permit, the applicant must obtain a Virginia Water Protection Permit from the Virginia Department of Environmental Quality (DEQ) assuring that applicable laws and regulations pertaining to water quality are not violated. A vicinity map and project plans are attached. This public notice and the drawings can also be viewed at <http://www.nao.usace.army.mil/Regulatory/PN/PN.html>.

AUTHORITY: Permits are required pursuant to Sections 401 and 404 of the Clean Water Act (Public Law 95-217) and Title 62.1 of the Code of Virginia.

FEDERAL EVALUATION OF APPLICATION: The decision whether to issue a permit will be based on an evaluation of the probable impact including cumulative impacts of the proposed activity on the public interest. The decision will reflect the national concern for both protection and utilization of important resources. The benefits which reasonably may be expected from the proposal must be balanced against its reasonably foreseeable detriments. All of the proposal's relevant factors will be considered, including conservation, economics, aesthetics, general environmental concerns, wetlands, cultural values, fish and wildlife values, flood hazards, flood plain values, land use classification, navigation, shoreline erosion and accretion, recreation,

water supply and conservation, water quality, energy needs, safety, food and fiber production, mineral needs, consideration of property ownership and, in general, the needs and welfare of the people. The Environmental Protection Agency's "Guidelines for Specification of Disposal Sites for Dredged or Fill Material" will also be applied (Section 404(b)(1) of the Clean Water Act).

The Corps of Engineers is soliciting comments from the public; Federal, state, and local agencies and officials; Indian Tribes; and other interested parties in order to consider and evaluate the impacts of this proposed activity. Any comments received will be considered by the Corps of Engineers to determine whether to issue, modify, condition or deny a permit for this proposal. To make this decision, comments are used to assess impacts on endangered species, historic properties, water quality, general environmental effects, and the other public interest factors listed above. Comments are used in the preparation of an Environmental Assessment and/or an Environmental Impact Statement pursuant to the National Environmental Policy Act. Comments are also used to determine the need for a public hearing and to determine the overall public interest of the proposed activity. Anyone may request a public hearing to consider this permit application by writing to the District Commander within 30 days of the date of this notice, stating specific reasons for holding the public hearing. The District Commander will then decide if a hearing should be held.

Preliminary review indicates that: (1) no environmental impact statement was prepared; (2) no species of fish, wildlife, or plant (or their critical habitat) listed as endangered or threatened under the Endangered Species Act of 1973 (PL 93-205) will be affected; and (3) known properties eligible for inclusion or included in the National Register of Historic Places are within the permit area, however, would not be adversely affected by the proposal. The permit area consists of the impact areas and adjacent uplands. Additional information might change any of these findings.

PRIVACY AND CONFIDENTIALITY: Comments and information, including the identity of the submitter, submitted in response to this Public Notice may be disclosed, reproduced, and distributed at the discretion of the U.S. Army Corps of Engineers. Information that is submitted in connection with this Public Notice cannot be maintained as confidential by the U.S. Army Corps of Engineers. Submissions should not include any information that the submitter seeks to preserve as confidential.

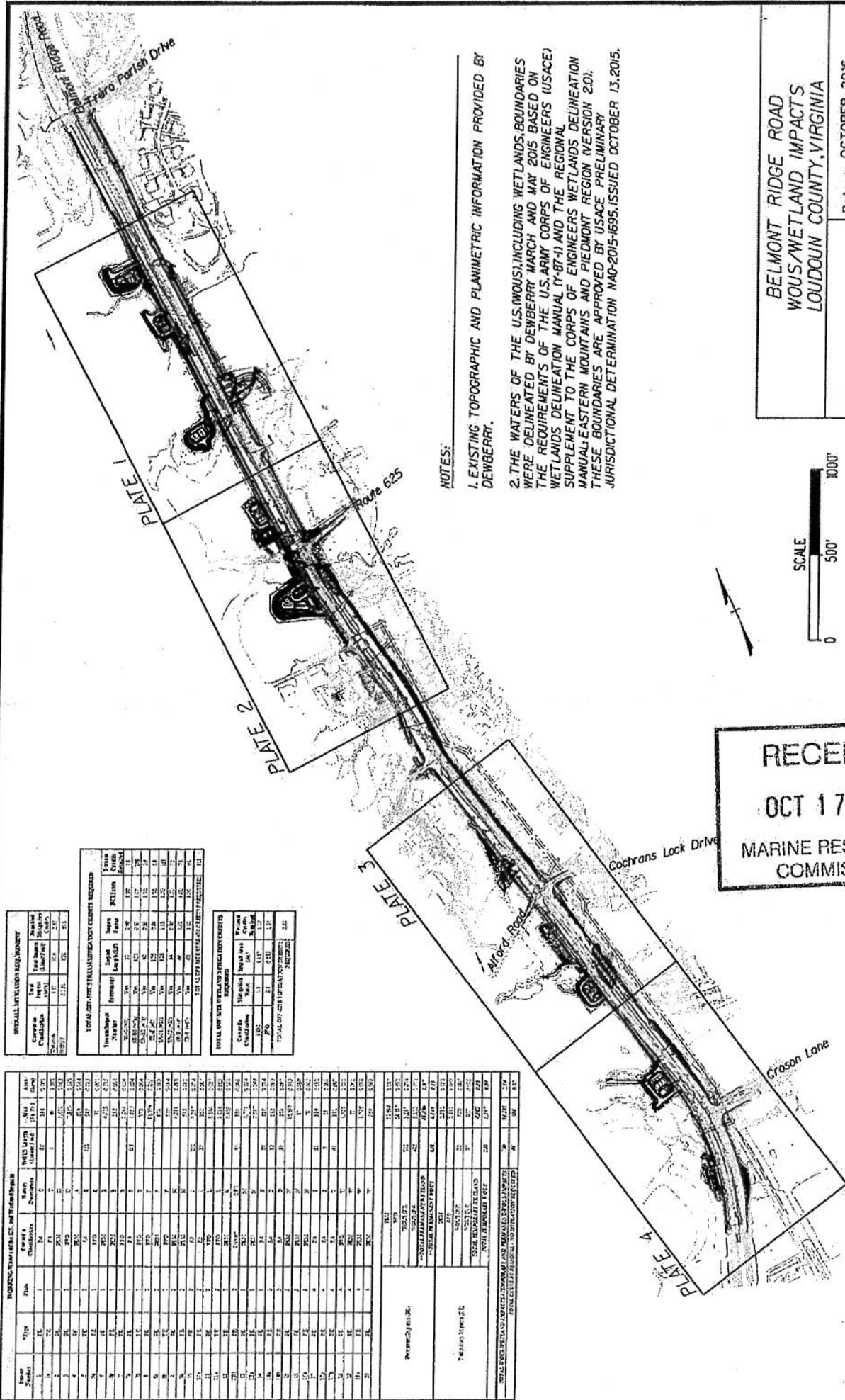
COMMENT PERIOD: Comments on this project should be made in writing, addressed to the U.S. Army Corps of Engineers-Norfolk District, Northern Virginia Field Office, 18139 Triangle Plaza, Suite 213, Dumfries, VA 22026, and should be received by the close of business on December 15, 2016.

If you have any questions about this project or the permit process, please contact Mr. Ron Stouffer at 703-221-6967.

FOR THE DISTRICT COMMANDER:

Tucker Smith  
Chief, Northern Virginia  
Regulatory Section

Enclosures



OVERALL DETECTION REQUIREMENT			
Category	Count	Area	Notes
Wetland	10	1.0	
Other	10	1.0	

TOTAL DETECTION REQUIREMENT			
Category	Count	Area	Notes
Wetland	10	1.0	
Other	10	1.0	
Wetland	10	1.0	
Other	10	1.0	

TOTAL DETECTION REQUIREMENT			
Category	Count	Area	Notes
Wetland	10	1.0	
Other	10	1.0	
Wetland	10	1.0	
Other	10	1.0	

Plate	Area	Wetland	Other	Total
1	1.0	1.0	1.0	2.0
2	1.0	1.0	1.0	2.0
3	1.0	1.0	1.0	2.0
4	1.0	1.0	1.0	2.0
5	1.0	1.0	1.0	2.0
6	1.0	1.0	1.0	2.0
7	1.0	1.0	1.0	2.0
8	1.0	1.0	1.0	2.0
9	1.0	1.0	1.0	2.0
10	1.0	1.0	1.0	2.0
11	1.0	1.0	1.0	2.0
12	1.0	1.0	1.0	2.0
13	1.0	1.0	1.0	2.0
14	1.0	1.0	1.0	2.0
15	1.0	1.0	1.0	2.0
16	1.0	1.0	1.0	2.0
17	1.0	1.0	1.0	2.0
18	1.0	1.0	1.0	2.0
19	1.0	1.0	1.0	2.0
20	1.0	1.0	1.0	2.0
21	1.0	1.0	1.0	2.0
22	1.0	1.0	1.0	2.0
23	1.0	1.0	1.0	2.0
24	1.0	1.0	1.0	2.0
25	1.0	1.0	1.0	2.0
26	1.0	1.0	1.0	2.0
27	1.0	1.0	1.0	2.0
28	1.0	1.0	1.0	2.0
29	1.0	1.0	1.0	2.0
30	1.0	1.0	1.0	2.0
31	1.0	1.0	1.0	2.0
32	1.0	1.0	1.0	2.0
33	1.0	1.0	1.0	2.0
34	1.0	1.0	1.0	2.0
35	1.0	1.0	1.0	2.0
36	1.0	1.0	1.0	2.0
37	1.0	1.0	1.0	2.0
38	1.0	1.0	1.0	2.0
39	1.0	1.0	1.0	2.0
40	1.0	1.0	1.0	2.0
41	1.0	1.0	1.0	2.0
42	1.0	1.0	1.0	2.0
43	1.0	1.0	1.0	2.0
44	1.0	1.0	1.0	2.0
45	1.0	1.0	1.0	2.0
46	1.0	1.0	1.0	2.0
47	1.0	1.0	1.0	2.0
48	1.0	1.0	1.0	2.0
49	1.0	1.0	1.0	2.0
50	1.0	1.0	1.0	2.0
51	1.0	1.0	1.0	2.0
52	1.0	1.0	1.0	2.0
53	1.0	1.0	1.0	2.0
54	1.0	1.0	1.0	2.0
55	1.0	1.0	1.0	2.0
56	1.0	1.0	1.0	2.0
57	1.0	1.0	1.0	2.0
58	1.0	1.0	1.0	2.0
59	1.0	1.0	1.0	2.0
60	1.0	1.0	1.0	2.0
61	1.0	1.0	1.0	2.0
62	1.0	1.0	1.0	2.0
63	1.0	1.0	1.0	2.0
64	1.0	1.0	1.0	2.0
65	1.0	1.0	1.0	2.0
66	1.0	1.0	1.0	2.0
67	1.0	1.0	1.0	2.0
68	1.0	1.0	1.0	2.0
69	1.0	1.0	1.0	2.0
70	1.0	1.0	1.0	2.0
71	1.0	1.0	1.0	2.0
72	1.0	1.0	1.0	2.0
73	1.0	1.0	1.0	2.0
74	1.0	1.0	1.0	2.0
75	1.0	1.0	1.0	2.0
76	1.0	1.0	1.0	2.0
77	1.0	1.0	1.0	2.0
78	1.0	1.0	1.0	2.0
79	1.0	1.0	1.0	2.0
80	1.0	1.0	1.0	2.0
81	1.0	1.0	1.0	2.0
82	1.0	1.0	1.0	2.0
83	1.0	1.0	1.0	2.0
84	1.0	1.0	1.0	2.0
85	1.0	1.0	1.0	2.0
86	1.0	1.0	1.0	2.0
87	1.0	1.0	1.0	2.0
88	1.0	1.0	1.0	2.0
89	1.0	1.0	1.0	2.0
90	1.0	1.0	1.0	2.0
91	1.0	1.0	1.0	2.0
92	1.0	1.0	1.0	2.0
93	1.0	1.0	1.0	2.0
94	1.0	1.0	1.0	2.0
95	1.0	1.0	1.0	2.0
96	1.0	1.0	1.0	2.0
97	1.0	1.0	1.0	2.0
98	1.0	1.0	1.0	2.0
99	1.0	1.0	1.0	2.0
100	1.0	1.0	1.0	2.0

NOTES:

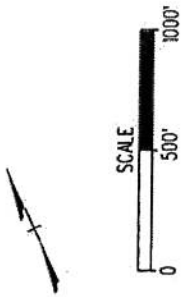
1. EXISTING TOPOGRAPHIC AND PLANIMETRIC INFORMATION PROVIDED BY DEWBERRY.

2. THE WATERS OF THE U.S. (WOU), INCLUDING WETLANDS, BOUNDARIES WERE DELINEATED BY DEWBERRY MARCH AND MAY 2015 BASED ON THE REQUIREMENTS OF THE U.S. ARMY CORPS OF ENGINEERS (USACE) WETLANDS DELINEATION MANUAL (7-87-1) AND THE REGIONAL SUPPLEMENT TO THE CORPS OF ENGINEERS WETLANDS DELINEATION MANUAL: EASTERN MOUNTAINS AND PIEDMONT REGION (VERSION 2.0). THESE BOUNDARIES ARE APPROVED BY USACE PRELIMINARY JURISDICTIONAL DETERMINATION NAD-2015-1695, ISSUED OCTOBER 13, 2015.

**Dewberry**

BELMONT RIDGE ROAD  
WOU/WETLAND IMPACTS  
LOUDOUN COUNTY, VIRGINIA

Date : OCTOBER 2016  
Scale : 1"=500'  
Sheet : 1 OF 5



RECEIVED  
OCT 17 2016  
MARINE RESOURCES  
COMMISSION

# BELMONT RIDGE ROAD WQUS/WETLAND IMPACTS



Plate 1

Date : OCT. 2016

Scale : 1" = 100'

Sheet : 2 of 5



## LEGEND:

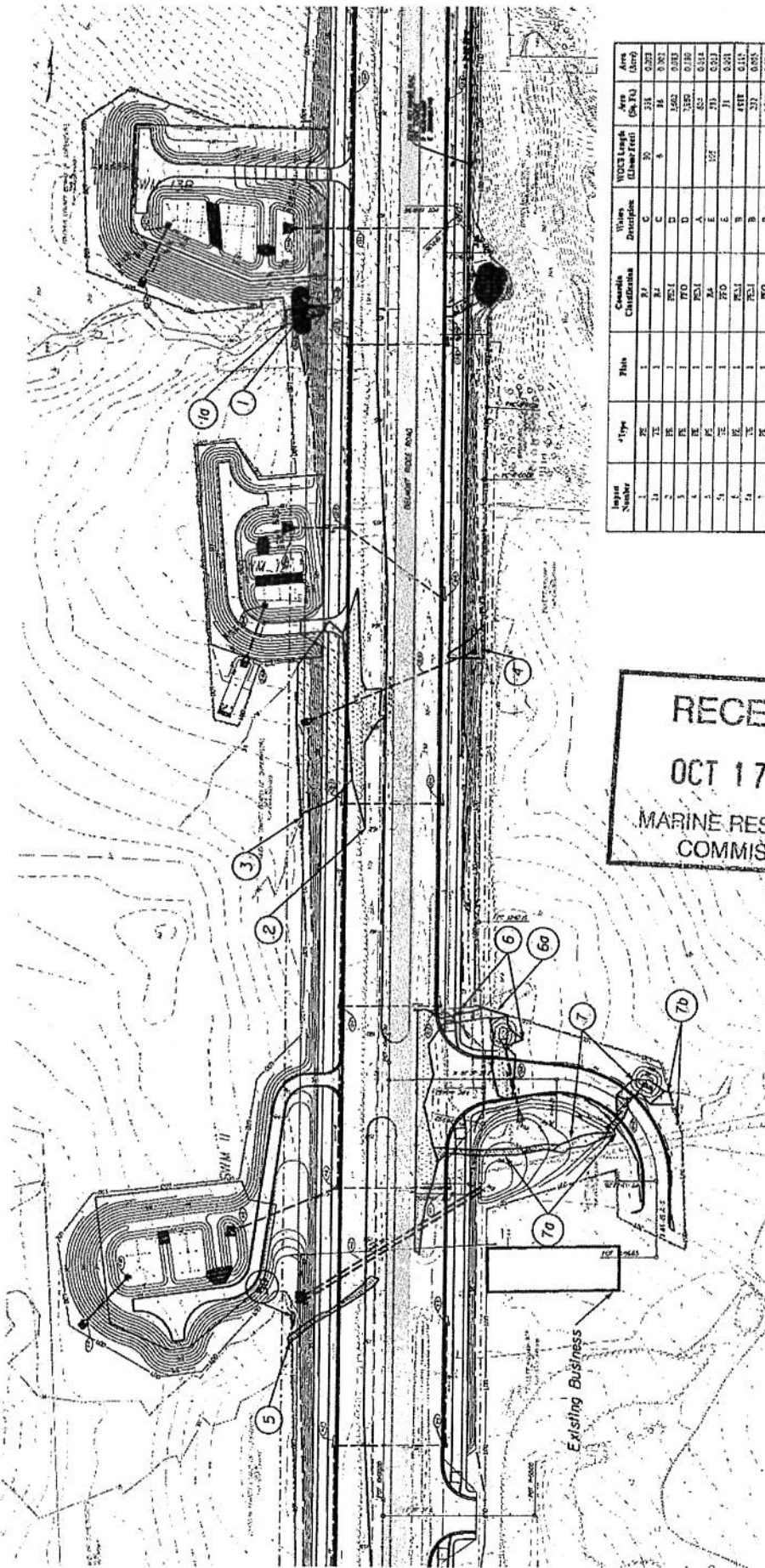


Permanent Palustrine Emergent (PEM) Wetland  
Permanent Palustrine Forested (PFO) Wetland  
Permanent WQUS (Varies; See Impact Table for Classification)



Temporary Palustrine Emergent (PEM) Wetland  
Temporary Palustrine Forested (PFO) Wetland  
Temporary WQUS (Varies; See Impact Table for Classification)

Impact Number



RECEIVED  
OCT 17 2016  
MARINE RESOURCES  
COMMISSION

Impact Number	Type	File	Consent Classification	Wetland Designation	WQUS Length (Linear Feet)	Area (Acres)
1	PE	1	PA	C	20	0.25
2	PE	1	PA	C	20	0.25
3	PE	1	PA	C	20	0.25
5	PE	1	PA	C	20	0.25
6	PE	1	PA	C	20	0.25
6a	PE	1	PA	C	20	0.25
7	PE	1	PA	C	20	0.25
7a	PE	1	PA	C	20	0.25
7b	PE	1	PA	C	20	0.25
10a	PE	1	PA	C	20	0.25



# BELMONT RIDGE ROAD WOUS/WETLAND IMPACTS



Plate 2

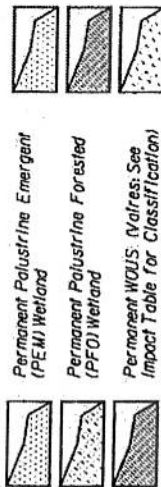
Date : OCT. 2016

Scale : 1" = 100'

Sheet : 3 of 5



## LEGEND:



Permanent Palustrine Emergent (PEM) Wetland  
Permanent Palustrine Forested (PFO) Wetland  
Permanent WOUS (Wetlands): See Impact Table for Classification  
Temporary Palustrine Emergent (PEM) Wetland  
Temporary WOUS (Wetlands): See Impact Table for Classification  
Temporary Palustrine Forested (PFO) Wetland

Impact Number

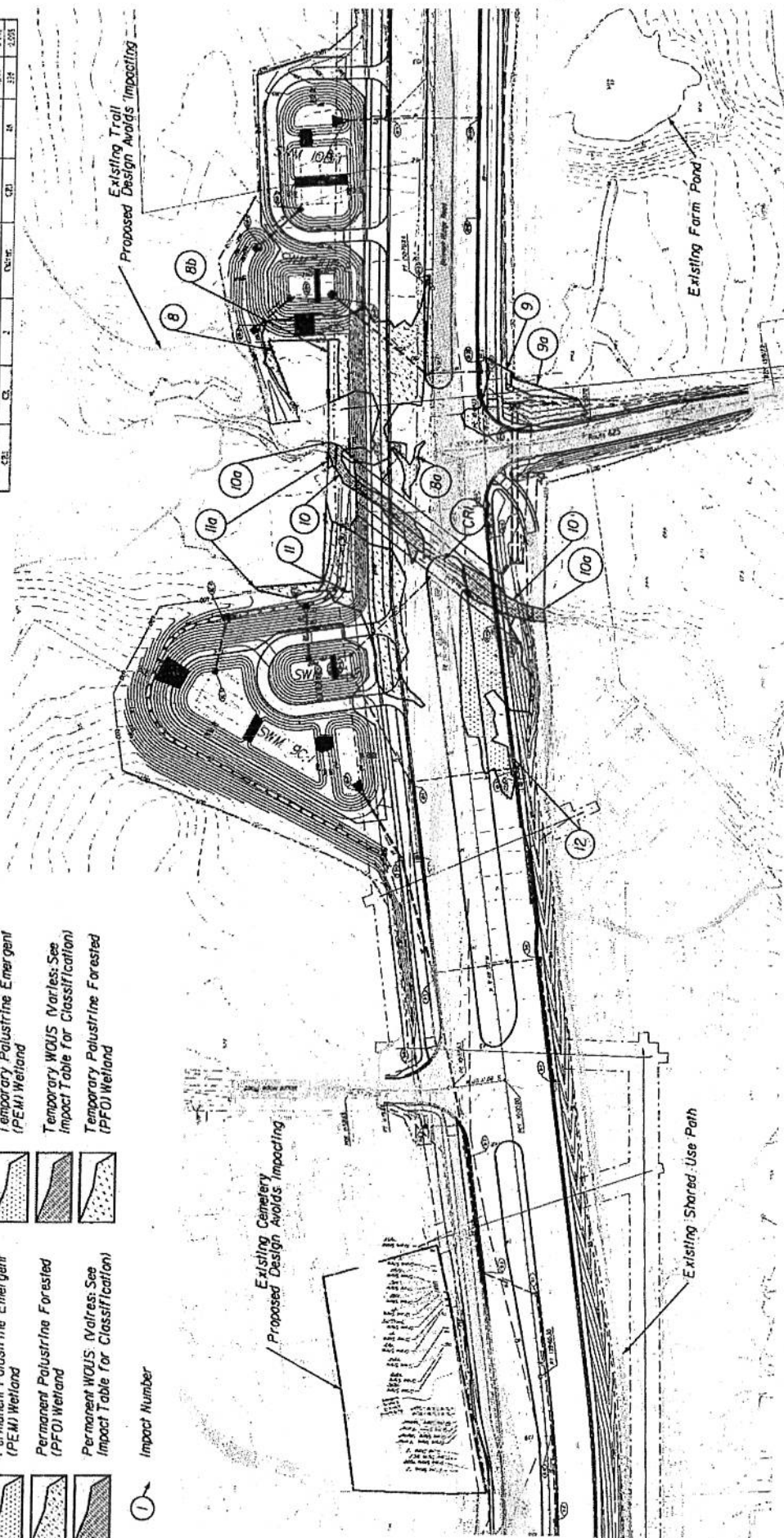


RECEIVED

OCT 17 2016

MARINE RESOURCES  
COMMISSION

Impact Number	Type	Dist	Comprehensive Classification	Wetland Description	WOUS Length (Linear Feet)	Area (Sq. Ft.)	Area (Acres)
1	PE	2	PEO	F		12,224	0.280
2	PE	2	PEO	F		1,118	0.025
3	PE	2	PEO	F		203	0.004
4	PE	2	PEO	F		231	0.005
5	PE	2	PEO	F		231	0.005
6	PE	2	PEO	F		231	0.005
7	PE	2	PEO	F		231	0.005
8	PE	2	PEO	F		231	0.005
9	PE	2	PEO	F		231	0.005
10	PE	2	PEO	F		231	0.005
11	PE	2	PEO	F		231	0.005
12	PE	2	PEO	F		231	0.005
13	PE	2	PEO	F		231	0.005
14	PE	2	PEO	F		231	0.005
15	PE	2	PEO	F		231	0.005
16	PE	2	PEO	F		231	0.005
17	PE	2	PEO	F		231	0.005
18	PE	2	PEO	F		231	0.005
19	PE	2	PEO	F		231	0.005
20	PE	2	PEO	F		231	0.005
21	PE	2	PEO	F		231	0.005
22	PE	2	PEO	F		231	0.005
23	PE	2	PEO	F		231	0.005
24	PE	2	PEO	F		231	0.005
25	PE	2	PEO	F		231	0.005
26	PE	2	PEO	F		231	0.005
27	PE	2	PEO	F		231	0.005
28	PE	2	PEO	F		231	0.005
29	PE	2	PEO	F		231	0.005
30	PE	2	PEO	F		231	0.005
31	PE	2	PEO	F		231	0.005
32	PE	2	PEO	F		231	0.005
33	PE	2	PEO	F		231	0.005
34	PE	2	PEO	F		231	0.005
35	PE	2	PEO	F		231	0.005
36	PE	2	PEO	F		231	0.005
37	PE	2	PEO	F		231	0.005
38	PE	2	PEO	F		231	0.005
39	PE	2	PEO	F		231	0.005
40	PE	2	PEO	F		231	0.005
41	PE	2	PEO	F		231	0.005
42	PE	2	PEO	F		231	0.005
43	PE	2	PEO	F		231	0.005
44	PE	2	PEO	F		231	0.005
45	PE	2	PEO	F		231	0.005
46	PE	2	PEO	F		231	0.005
47	PE	2	PEO	F		231	0.005
48	PE	2	PEO	F		231	0.005
49	PE	2	PEO	F		231	0.005
50	PE	2	PEO	F		231	0.005
51	PE	2	PEO	F		231	0.005
52	PE	2	PEO	F		231	0.005
53	PE	2	PEO	F		231	0.005
54	PE	2	PEO	F		231	0.005
55	PE	2	PEO	F		231	0.005
56	PE	2	PEO	F		231	0.005
57	PE	2	PEO	F		231	0.005
58	PE	2	PEO	F		231	0.005
59	PE	2	PEO	F		231	0.005
60	PE	2	PEO	F		231	0.005
61	PE	2	PEO	F		231	0.005
62	PE	2	PEO	F		231	0.005
63	PE	2	PEO	F		231	0.005
64	PE	2	PEO	F		231	0.005
65	PE	2	PEO	F		231	0.005
66	PE	2	PEO	F		231	0.005
67	PE	2	PEO	F		231	0.005
68	PE	2	PEO	F		231	0.005
69	PE	2	PEO	F		231	0.005
70	PE	2	PEO	F		231	0.005
71	PE	2	PEO	F		231	0.005
72	PE	2	PEO	F		231	0.005
73	PE	2	PEO	F		231	0.005
74	PE	2	PEO	F		231	0.005
75	PE	2	PEO	F		231	0.005
76	PE	2	PEO	F		231	0.005
77	PE	2	PEO	F		231	0.005
78	PE	2	PEO	F		231	0.005
79	PE	2	PEO	F		231	0.005
80	PE	2	PEO	F		231	0.005
81	PE	2	PEO	F		231	0.005
82	PE	2	PEO	F		231	0.005
83	PE	2	PEO	F		231	0.005
84	PE	2	PEO	F		231	0.005
85	PE	2	PEO	F		231	0.005
86	PE	2	PEO	F		231	0.005
87	PE	2	PEO	F		231	0.005
88	PE	2	PEO	F		231	0.005
89	PE	2	PEO	F		231	0.005
90	PE	2	PEO	F		231	0.005
91	PE	2	PEO	F		231	0.005
92	PE	2	PEO	F		231	0.005
93	PE	2	PEO	F		231	0.005
94	PE	2	PEO	F		231	0.005
95	PE	2	PEO	F		231	0.005
96	PE	2	PEO	F		231	0.005
97	PE	2	PEO	F		231	0.005
98	PE	2	PEO	F		231	0.005
99	PE	2	PEO	F		231	0.005
100	PE	2	PEO	F		231	0.005



# BELMONT RIDGE ROAD WOUS/WETLAND IMPACTS



Plate 3

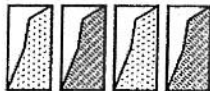
Date : OCT. 2016

Scale : 1" = 100'

Sheet : 4 of 5



## LEGEND:



Permanent Polustrine Emergent (PEM) Wetland

Permanent WOUS (Varies See Impact Table For Classification)

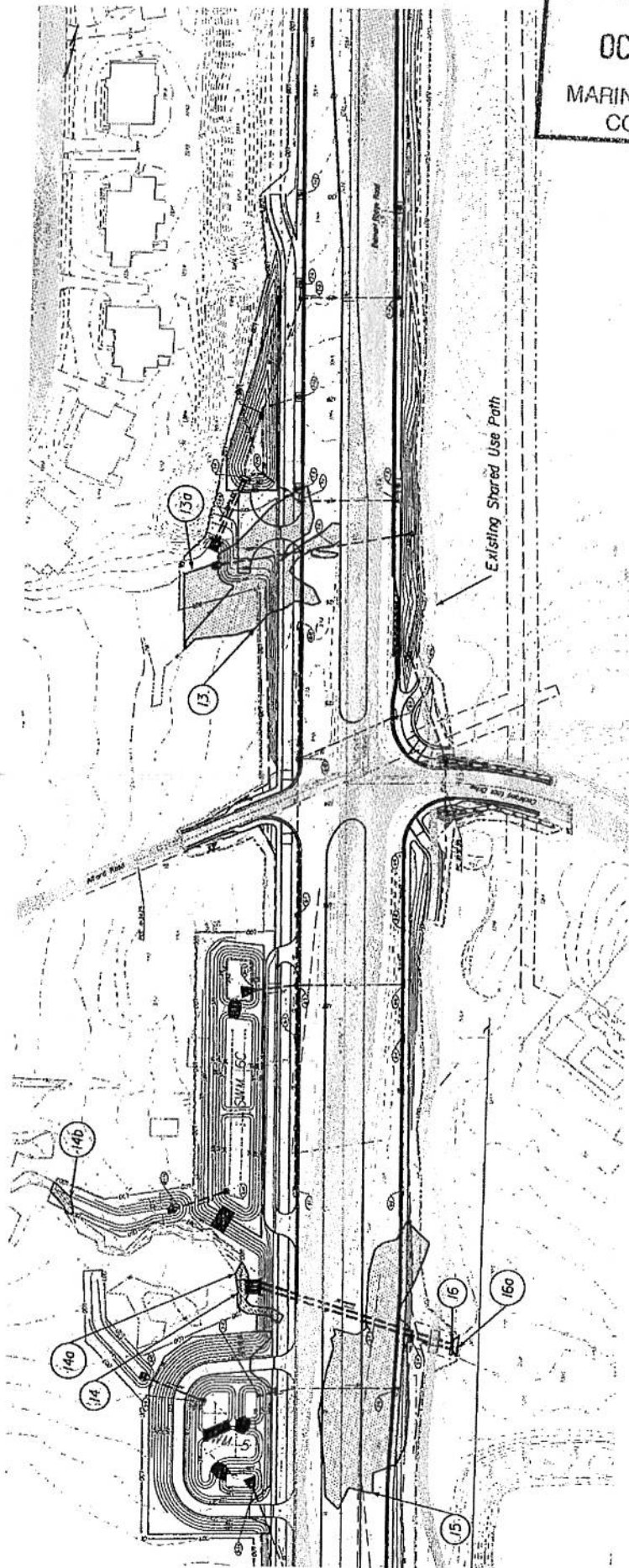
Temporary Polustrine Emergent (PEM) Wetland

Temporary WOUS (Varies See Impact Table For Classification)

Impact Number



Impact Number	Type	Plate	Canada Classification	Waters Divisions	WOS Length (Chain/Ft)	Area (Sq Ft)	Area (Ac)
13	PE	3	PE-S	24	227	0.234	
14	PE	3	PE-S	24	227	0.234	
15	PE	3	PE-S	24	227	0.234	
16	PE	3	PE-S	24	227	0.234	
17	PE	3	PE-S	24	227	0.234	
18	PE	3	PE-S	24	227	0.234	
19	PE	3	PE-S	24	227	0.234	
20	PE	3	PE-S	24	227	0.234	
21	PE	3	PE-S	24	227	0.234	
22	PE	3	PE-S	24	227	0.234	
23	PE	3	PE-S	24	227	0.234	
24	PE	3	PE-S	24	227	0.234	
25	PE	3	PE-S	24	227	0.234	
26	PE	3	PE-S	24	227	0.234	
27	PE	3	PE-S	24	227	0.234	
28	PE	3	PE-S	24	227	0.234	
29	PE	3	PE-S	24	227	0.234	
30	PE	3	PE-S	24	227	0.234	
31	PE	3	PE-S	24	227	0.234	
32	PE	3	PE-S	24	227	0.234	
33	PE	3	PE-S	24	227	0.234	
34	PE	3	PE-S	24	227	0.234	
35	PE	3	PE-S	24	227	0.234	
36	PE	3	PE-S	24	227	0.234	
37	PE	3	PE-S	24	227	0.234	
38	PE	3	PE-S	24	227	0.234	
39	PE	3	PE-S	24	227	0.234	
40	PE	3	PE-S	24	227	0.234	
41	PE	3	PE-S	24	227	0.234	
42	PE	3	PE-S	24	227	0.234	
43	PE	3	PE-S	24	227	0.234	
44	PE	3	PE-S	24	227	0.234	
45	PE	3	PE-S	24	227	0.234	
46	PE	3	PE-S	24	227	0.234	
47	PE	3	PE-S	24	227	0.234	
48	PE	3	PE-S	24	227	0.234	
49	PE	3	PE-S	24	227	0.234	
50	PE	3	PE-S	24	227	0.234	
51	PE	3	PE-S	24	227	0.234	
52	PE	3	PE-S	24	227	0.234	
53	PE	3	PE-S	24	227	0.234	
54	PE	3	PE-S	24	227	0.234	
55	PE	3	PE-S	24	227	0.234	
56	PE	3	PE-S	24	227	0.234	
57	PE	3	PE-S	24	227	0.234	
58	PE	3	PE-S	24	227	0.234	
59	PE	3	PE-S	24	227	0.234	
60	PE	3	PE-S	24	227	0.234	
61	PE	3	PE-S	24	227	0.234	
62	PE	3	PE-S	24	227	0.234	
63	PE	3	PE-S	24	227	0.234	
64	PE	3	PE-S	24	227	0.234	
65	PE	3	PE-S	24	227	0.234	
66	PE	3	PE-S	24	227	0.234	
67	PE	3	PE-S	24	227	0.234	
68	PE	3	PE-S	24	227	0.234	
69	PE	3	PE-S	24	227	0.234	
70	PE	3	PE-S	24	227	0.234	
71	PE	3	PE-S	24	227	0.234	
72	PE	3	PE-S	24	227	0.234	
73	PE	3	PE-S	24	227	0.234	
74	PE	3	PE-S	24	227	0.234	
75	PE	3	PE-S	24	227	0.234	
76	PE	3	PE-S	24	227	0.234	
77	PE	3	PE-S	24	227	0.234	
78	PE	3	PE-S	24	227	0.234	
79	PE	3	PE-S	24	227	0.234	
80	PE	3	PE-S	24	227	0.234	
81	PE	3	PE-S	24	227	0.234	
82	PE	3	PE-S	24	227	0.234	
83	PE	3	PE-S	24	227	0.234	
84	PE	3	PE-S	24	227	0.234	
85	PE	3	PE-S	24	227	0.234	
86	PE	3	PE-S	24	227	0.234	
87	PE	3	PE-S	24	227	0.234	
88	PE	3	PE-S	24	227	0.234	
89	PE	3	PE-S	24	227	0.234	
90	PE	3	PE-S	24	227	0.234	
91	PE	3	PE-S	24	227	0.234	
92	PE	3	PE-S	24	227	0.234	
93	PE	3	PE-S	24	227	0.234	
94	PE	3	PE-S	24	227	0.234	
95	PE	3	PE-S	24	227	0.234	
96	PE	3	PE-S	24	227	0.234	
97	PE	3	PE-S	24	227	0.234	
98	PE	3	PE-S	24	227	0.234	
99	PE	3	PE-S	24	227	0.234	
100	PE	3	PE-S	24	227	0.234	



RECEIVED

OCT 17 2016

MARINE RESOURCES COMMISSION

RECEIVED

OCT 17 2016

MARINE RESOURCES  
COMMISSION

**BELMONT RIDGE ROAD  
WOUS/WETLAND IMPACTS**



Plate 4

Date : OCT. 2016

Scale : 1" = 100'

Sheet : 5 of 5



**LEGEND:**

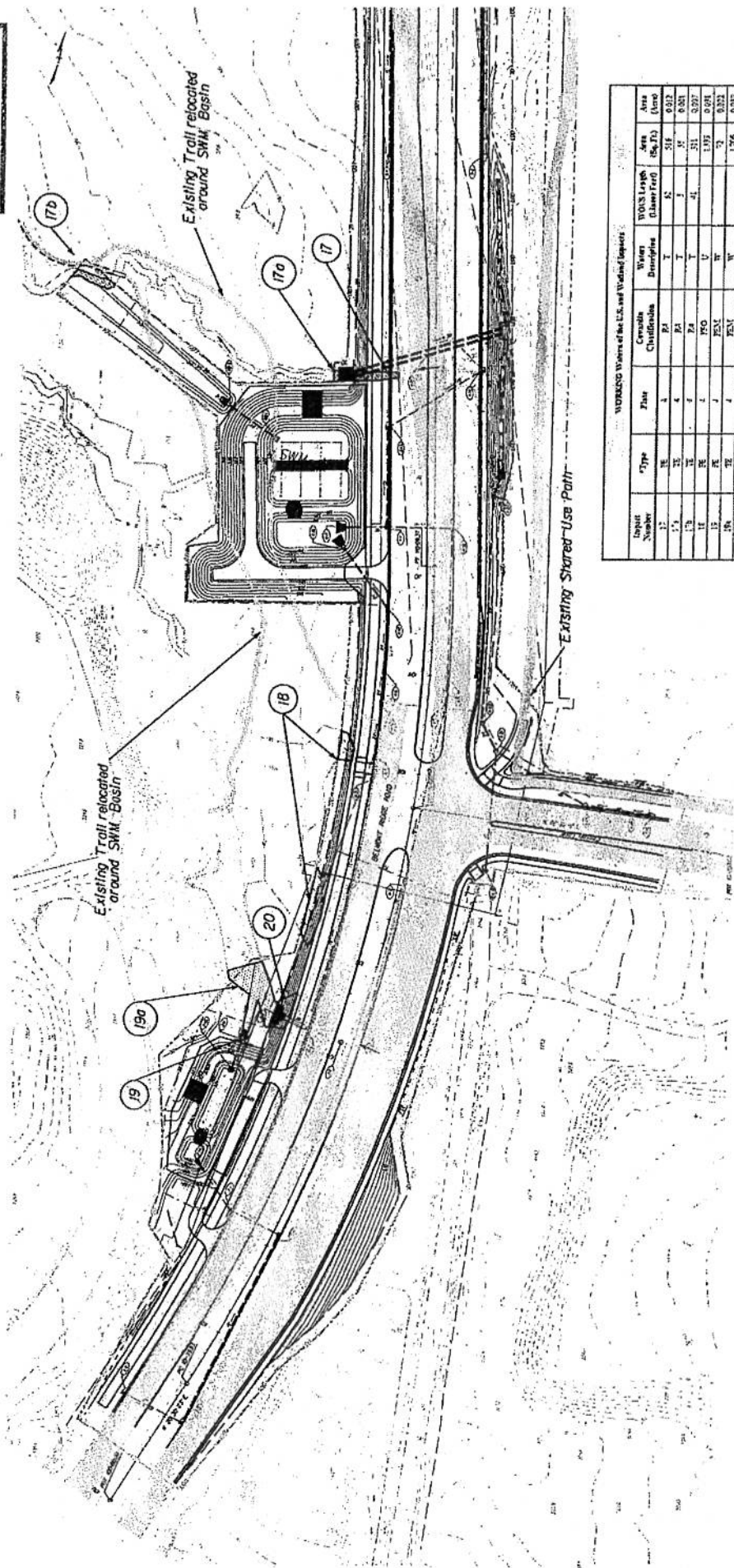


Permanent Palustrine Emergent  
(PEM) Wetland  
Permanent Palustrine Forested  
(PFO) Wetland  
Permanent WOUS (Wetlands of Unknown Status)  
Impact Table for Classification



Temporary Palustrine Emergent  
(PEM) Wetland  
Temporary WOUS (Wetlands of Unknown Status)  
Impact Table for Classification

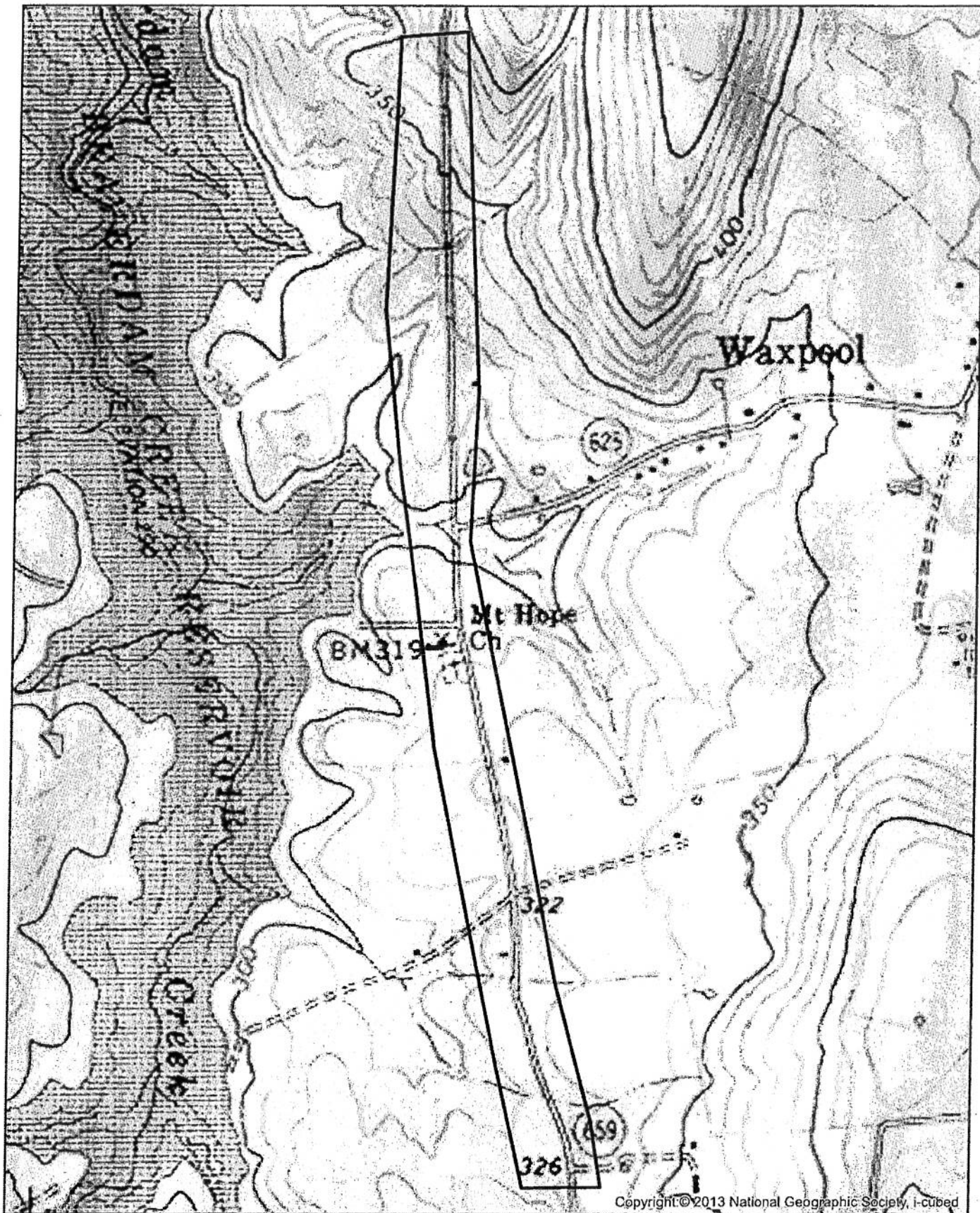
Impact Number



Wetlands of the U.S. and Wetland Impacts

Impact Number	Type	Size	Category	Wetland Description	Wetland Length (Linear Feet)	Area (Acres)
17a	PEM	4	PA	Palustrine Emergent	42	0.012
17b	PEM	4	PA	Palustrine Emergent	42	0.012
17c	PEM	4	PA	Palustrine Emergent	42	0.012
18	PEM	4	PA	Palustrine Emergent	42	0.012
19	PEM	4	PA	Palustrine Emergent	42	0.012
20	PEM	4	PA	Palustrine Emergent	42	0.012
21	PEM	4	PA	Palustrine Emergent	42	0.012
22	PEM	4	PA	Palustrine Emergent	42	0.012
23	PEM	4	PA	Palustrine Emergent	42	0.012
24	PEM	4	PA	Palustrine Emergent	42	0.012
25	PEM	4	PA	Palustrine Emergent	42	0.012
26	PEM	4	PA	Palustrine Emergent	42	0.012
27	PEM	4	PA	Palustrine Emergent	42	0.012
28	PEM	4	PA	Palustrine Emergent	42	0.012
29	PEM	4	PA	Palustrine Emergent	42	0.012
30	PEM	4	PA	Palustrine Emergent	42	0.012
31	PEM	4	PA	Palustrine Emergent	42	0.012
32	PEM	4	PA	Palustrine Emergent	42	0.012
33	PEM	4	PA	Palustrine Emergent	42	0.012
34	PEM	4	PA	Palustrine Emergent	42	0.012
35	PEM	4	PA	Palustrine Emergent	42	0.012
36	PEM	4	PA	Palustrine Emergent	42	0.012
37	PEM	4	PA	Palustrine Emergent	42	0.012
38	PEM	4	PA	Palustrine Emergent	42	0.012
39	PEM	4	PA	Palustrine Emergent	42	0.012
40	PEM	4	PA	Palustrine Emergent	42	0.012
41	PEM	4	PA	Palustrine Emergent	42	0.012
42	PEM	4	PA	Palustrine Emergent	42	0.012
43	PEM	4	PA	Palustrine Emergent	42	0.012
44	PEM	4	PA	Palustrine Emergent	42	0.012
45	PEM	4	PA	Palustrine Emergent	42	0.012
46	PEM	4	PA	Palustrine Emergent	42	0.012
47	PEM	4	PA	Palustrine Emergent	42	0.012
48	PEM	4	PA	Palustrine Emergent	42	0.012
49	PEM	4	PA	Palustrine Emergent	42	0.012
50	PEM	4	PA	Palustrine Emergent	42	0.012
51	PEM	4	PA	Palustrine Emergent	42	0.012
52	PEM	4	PA	Palustrine Emergent	42	0.012
53	PEM	4	PA	Palustrine Emergent	42	0.012
54	PEM	4	PA	Palustrine Emergent	42	0.012
55	PEM	4	PA	Palustrine Emergent	42	0.012
56	PEM	4	PA	Palustrine Emergent	42	0.012
57	PEM	4	PA	Palustrine Emergent	42	0.012
58	PEM	4	PA	Palustrine Emergent	42	0.012
59	PEM	4	PA	Palustrine Emergent	42	0.012
60	PEM	4	PA	Palustrine Emergent	42	0.012
61	PEM	4	PA	Palustrine Emergent	42	0.012
62	PEM	4	PA	Palustrine Emergent	42	0.012
63	PEM	4	PA	Palustrine Emergent	42	0.012
64	PEM	4	PA	Palustrine Emergent	42	0.012
65	PEM	4	PA	Palustrine Emergent	42	0.012
66	PEM	4	PA	Palustrine Emergent	42	0.012
67	PEM	4	PA	Palustrine Emergent	42	0.012
68	PEM	4	PA	Palustrine Emergent	42	0.012
69	PEM	4	PA	Palustrine Emergent	42	0.012
70	PEM	4	PA	Palustrine Emergent	42	0.012
71	PEM	4	PA	Palustrine Emergent	42	0.012
72	PEM	4	PA	Palustrine Emergent	42	0.012
73	PEM	4	PA	Palustrine Emergent	42	0.012
74	PEM	4	PA	Palustrine Emergent	42	0.012
75	PEM	4	PA	Palustrine Emergent	42	0.012
76	PEM	4	PA	Palustrine Emergent	42	0.012
77	PEM	4	PA	Palustrine Emergent	42	0.012
78	PEM	4	PA	Palustrine Emergent	42	0.012
79	PEM	4	PA	Palustrine Emergent	42	0.012
80	PEM	4	PA	Palustrine Emergent	42	0.012
81	PEM	4	PA	Palustrine Emergent	42	0.012
82	PEM	4	PA	Palustrine Emergent	42	0.012
83	PEM	4	PA	Palustrine Emergent	42	0.012
84	PEM	4	PA	Palustrine Emergent	42	0.012
85	PEM	4	PA	Palustrine Emergent	42	0.012
86	PEM	4	PA	Palustrine Emergent	42	0.012
87	PEM	4	PA	Palustrine Emergent	42	0.012
88	PEM	4	PA	Palustrine Emergent	42	0.012
89	PEM	4	PA	Palustrine Emergent	42	0.012
90	PEM	4	PA	Palustrine Emergent	42	0.012
91	PEM	4	PA	Palustrine Emergent	42	0.012
92	PEM	4	PA	Palustrine Emergent	42	0.012
93	PEM	4	PA	Palustrine Emergent	42	0.012
94	PEM	4	PA	Palustrine Emergent	42	0.012
95	PEM	4	PA	Palustrine Emergent	42	0.012
96	PEM	4	PA	Palustrine Emergent	42	0.012
97	PEM	4	PA	Palustrine Emergent	42	0.012
98	PEM	4	PA	Palustrine Emergent	42	0.012
99	PEM	4	PA	Palustrine Emergent	42	0.012
100	PEM	4	PA	Palustrine Emergent	42	0.012





Arcola & Leesburg USGS Topographic Quads

Copyright © 2013 National Geographic Society, i-cubed

SCALE: 1" = 10,000'



DATE

July 2015

PROJ. NO.

50070048

TITLE

Site Topographic Map

PROJECT

Belmont Ridge Road Widening

SHEET NO.

1 OF 1