

**Quarterly Community Meeting
Tuesday July 25, 2017
7-8 PM**



**University Station
45299 Research Place, Suite 100
Ashburn VA 20147
571-258-3000**





SHERIFF
MICHAEL L. CHAPMAN





LCSO Mission Statement

SERVICE

TECHNOLOGY

LOUDOUN COUNTY SHERIFF'S OFFICE MISSION STATEMENT

The Loudoun County Sheriff's Office will strive to continuously improve safety and law enforcement services to all members of our community through the Step Up Strategy of improved service, technology, efficiency and professionalism.

We will work interactively with federal, state, and other local law enforcement authorities to vigorously and fairly enforce criminal laws by sharing capabilities, strategies and assets.

We will partner with community services groups and human services agencies to implement strategies that improve the quality of life for County residents, businesses and visitors.

Finally, we will engage our community through courteous and proactive outreach and communication, and work diligently to constantly improve our professionalism.

Every member of the Loudoun County Sheriff's Office is expected to contribute to the furtherance of this mission.

Michael L. Chapman
Sheriff, Loudoun County



EFFICIENCY

PROFESSIONALISM





New Ashburn Station Location

20272 Savin Hill Drive
Ashburn, VA

Fall 2017

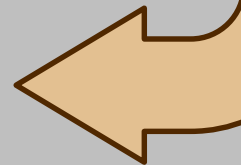




New Ashburn Station Progress

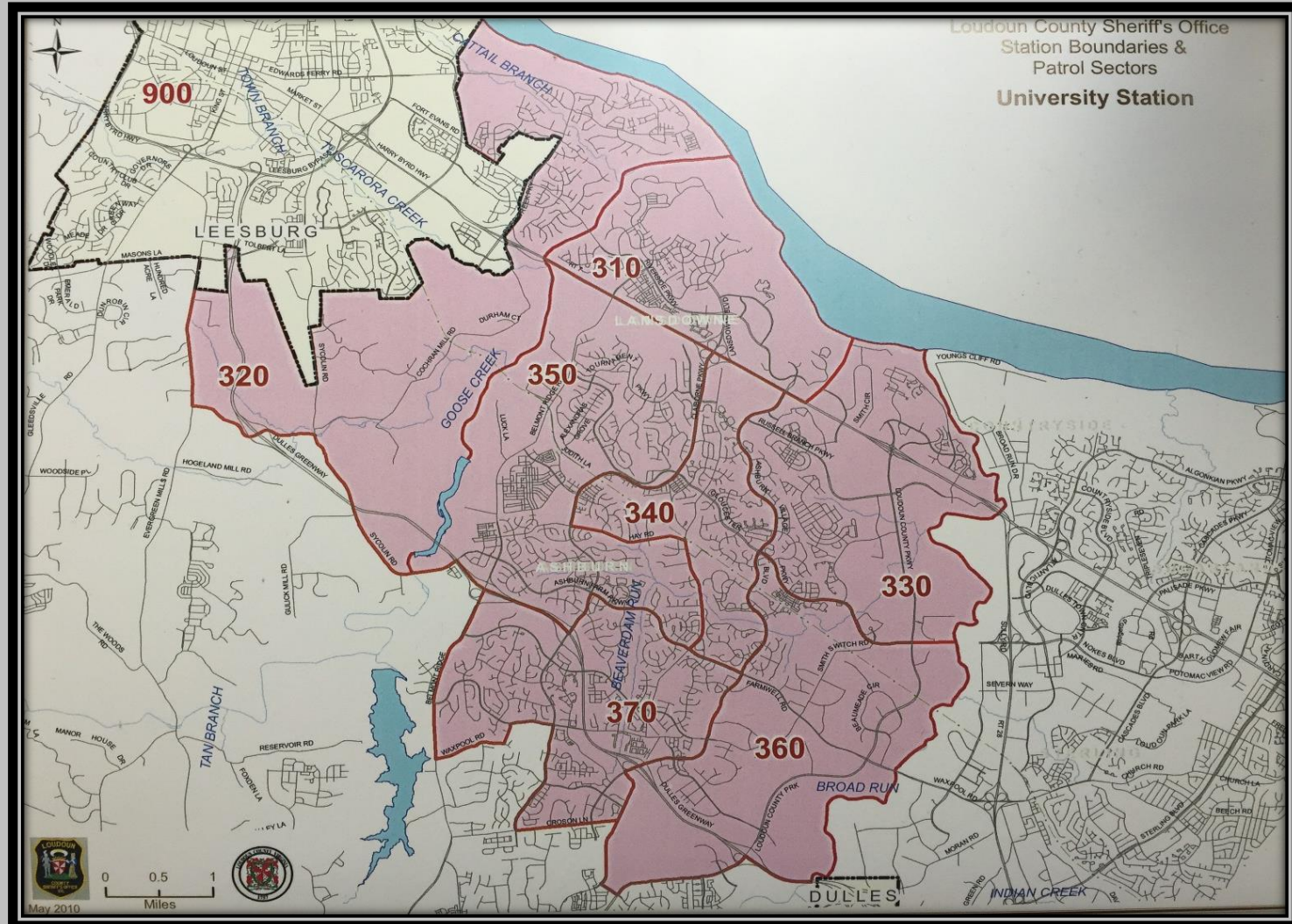


CONSTRUCTION UNDERWAY



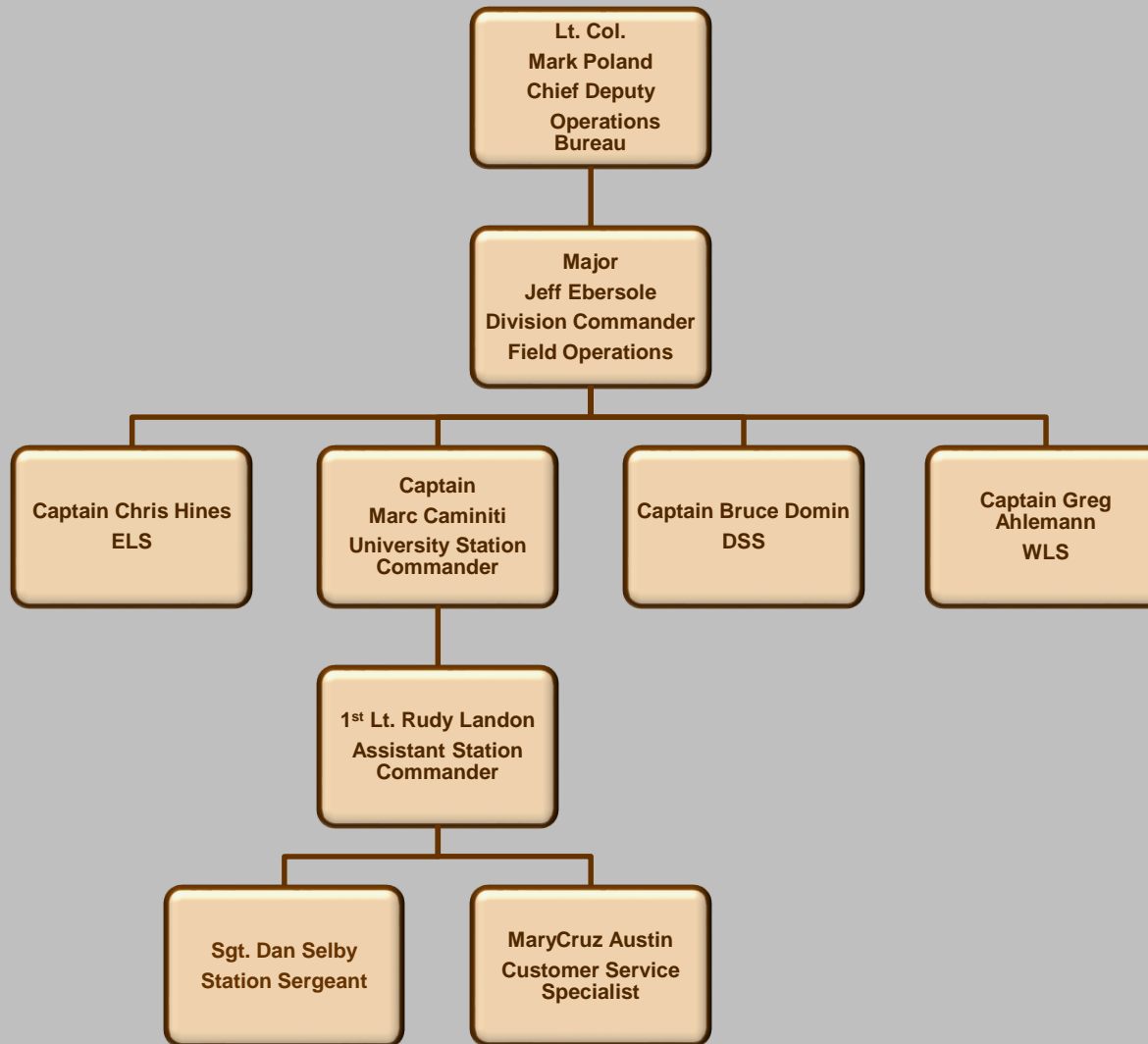


University Station Beats





University Station Leadership

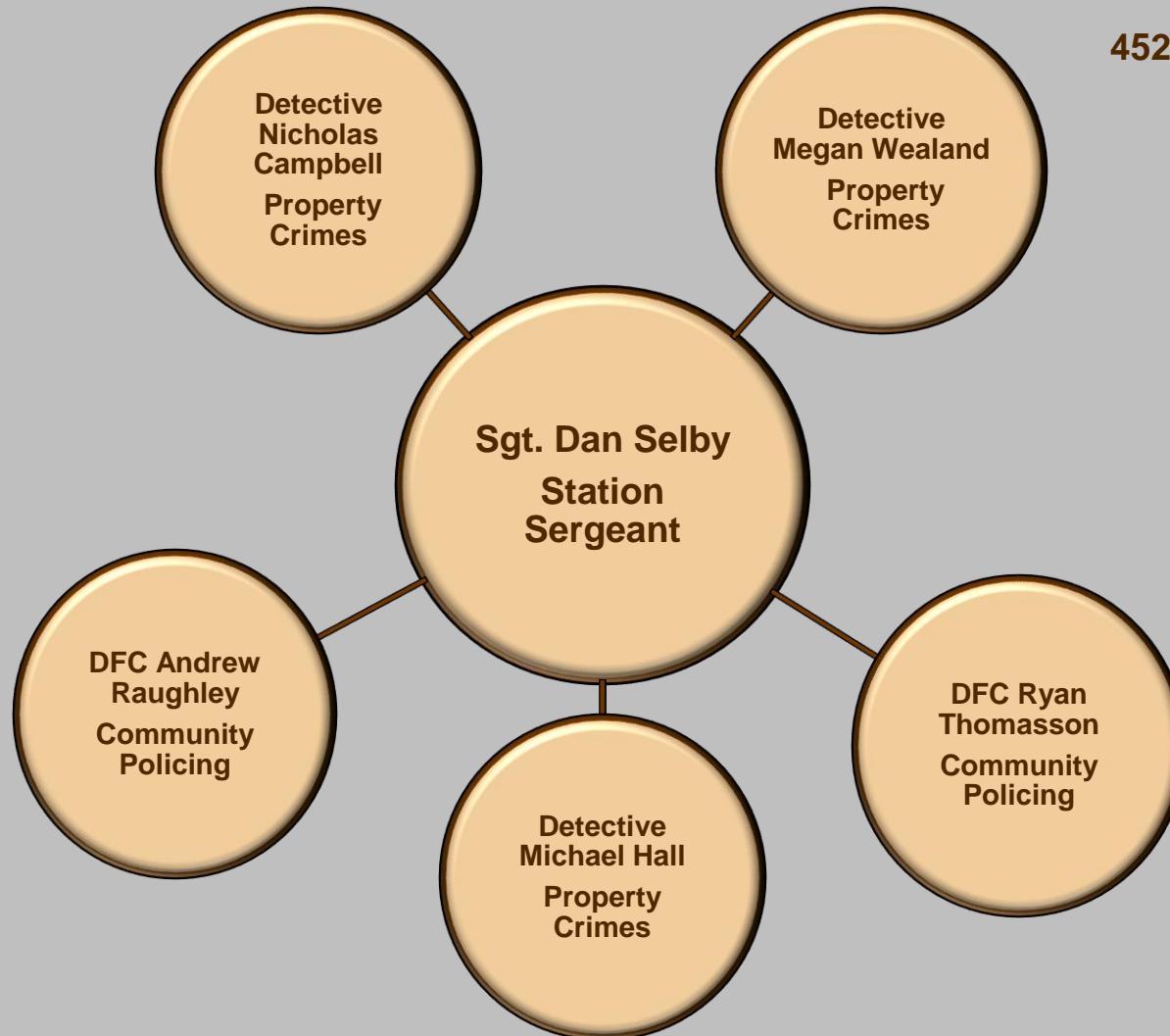




University Station Sergeant's Personnel



University Station
45299 Research Place
Ashburn, VA
571-258-3000





LCSO Website – sheriff.loudoun.gov



Website Offers Innovative & Interactive Features in a More User-Friendly Layout

- **Report a Crime Online**
 - ✓ Report Certain Crimes Like Larceny, ID Theft & Vandalism via the Internet.
- **Community Resource Directory**
 - ✓ Search Community Resources for Health & Human Services in Loudoun County.
- **Case Follow-Up**
 - ✓ Victim's can Follow-up & Inquire on Status of Case via the Website.
- **Find My Station**
 - ✓ A Searchable Map allowing Residents to find their nearest Station providing services such as Fingerprinting & Background Checks.
- **Traffic Incident Mapping Using Online Mapping Resources**



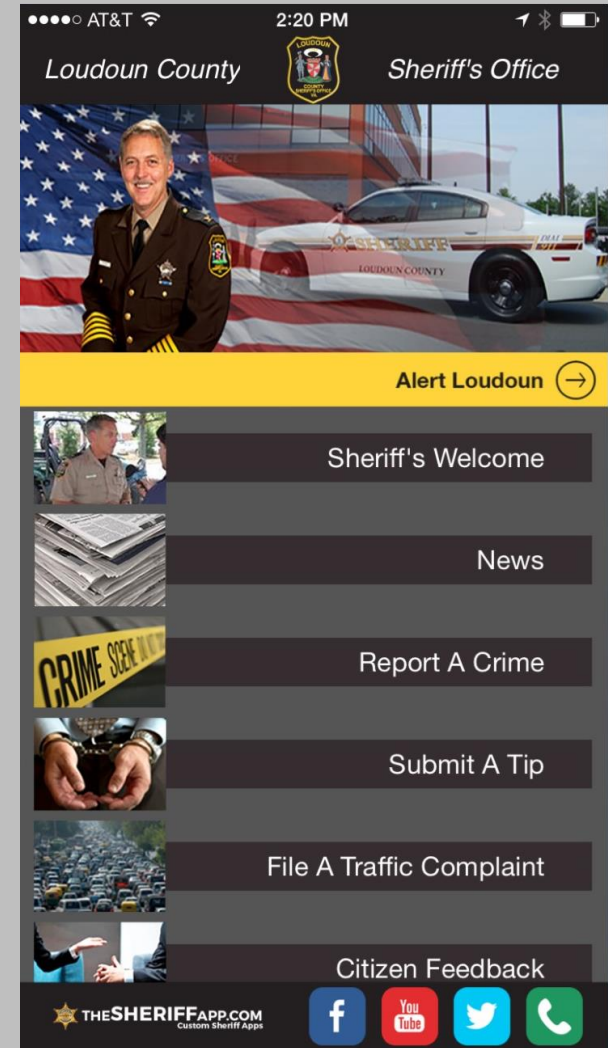


Loudoun County Sheriff's Office App



PUT CRIME INFORMATION AT YOUR FINGERTIPS

- Submit Crime Tips
- Report a Crime
- Make a Traffic Complaint
- Provide Citizen Feedback
- Learn the Latest Public Safety News
- Review Current Traffic Incidents Dispatched by the LCSO
- Receive Non-Emergency Community Notifications
- Learn of Upcoming Meetings & Events Held by the LCSO





CALL if You Can

TEXT 911

TEXT if You Can't



Beginning 03/01/2016, in all of Loudoun County and its incorporated towns.

If you are deaf, hard of hearing, or have a speech disability.

If you cannot speak due to injury or medical condition.



HOW TO TEXT TO 911:

- ☐ Enter only 911 in the “To” field.
- ☐ Text should be short and include:
 - Location
 - Type of Emergency
- ☐ Be prepared to answer questions and follow Call Taker’s instructions.
- ☐ Photos and videos cannot be sent to 911.
- ☐ Texts to 911 cannot include more than 1 recipient.
- ☐ TEXT 911 is available for:
 - ❖ FIRE
 - ❖ MEDICAL
 - ❖ POLICE

If you are in a threatening situation.

If your mobile reception signal is poor.





Prescription Drug Take Back



U.S. DEPARTMENT OF JUSTICE ★ DRUG ENFORCEMENT ADMINISTRATION
OFFICE OF DIVERSION CONTROL

National Prescription Drug Take-Back Day Loudoun County Sheriff's Office in conjunction with the Drug Enforcement Administration October 28, 2017

10am to 2pm



Our local drop off location is:

Ashburn Volunteer Fire Rescue Station 22
19485 Sandridge Way
Leesburg, Virginia 20176





Sheriff's Office Technology



Alert Loudoun 2.0

Information You Need Wherever You Are

Emergency Alerts, Traffic, Weather, County News

www.loudoun.gov/alert



- Follow Loudoun County Sheriff's Office on Facebook- www.facebook.com/loudounsheriff
- Follow LCSO on Twitter- www.twitter.com/loudounsheriff
- Follow us on Instagram- www.instagram.com/loudounsheriff
- Follow Loudoun County Traffic Incident Activity- www.sheriff.loudoun.gov/traffic
- Mobile Sheriff's Office App





Loudoun County Traffic Incident Activity

www.sheriff.loudoun.gov/traffic



GLOSSARY OF INCIDENT TYPES:

Major Accident: Crash involving possible serious injuries.

Property Damage Accident: Crash involving minor or no injuries.

Disabled Vehicle: A vehicle possibly impeding traffic flow.

Hit & Run Accident: A vehicle crash where a vehicle has left the scene.

Traffic Signal Malfunction: Traffic signals are either malfunctioning or off due to power failure.

Road Closure: Roadway is closed due to police activity or severe weather conditions.

Roadway Obstruction: An object in the roadway is interfering with traffic flow or motorist safety.


Loudoun County Traffic Incident Activity

Date	Time	Location	Type
Oct 29 2014	10:08:52	RED HILL RD-AB/EVERGREEN MILLS RD-AB	MAJOR ACCIDENT

Incidents: 1

[Switch to Mobile Device View](#) | [Clear the Map](#)

If you are unable to see the list of current incidents, please scroll to the top of the page.



REMINDER:

An intersection where the traffic signals are off due to power failure must be treated as a four-way stop!





LCSO

Medication Disposal Drop Box

DO YOU HAVE UNUSED OR EXPIRED MEDICATIONS ?



YOU MAY DROP OFF:

- Prescription Medications
- Prescription Patches
- Over the Counter Medications
- Vitamins
- Sample Medications
- Medications for Pets

THE FOLLOWING ARE NOT ACCEPTED:

- Needles (Sharps)
- Liquid Medications
- Aerosol Containers
- Inhalers
- Ointments and Lotions
- Medications from Businesses





Secure the Call



Have an Old Unused Cell Phone that You No Longer Need?

The Loudoun County Sheriff's Office has four locations with donation barrels:

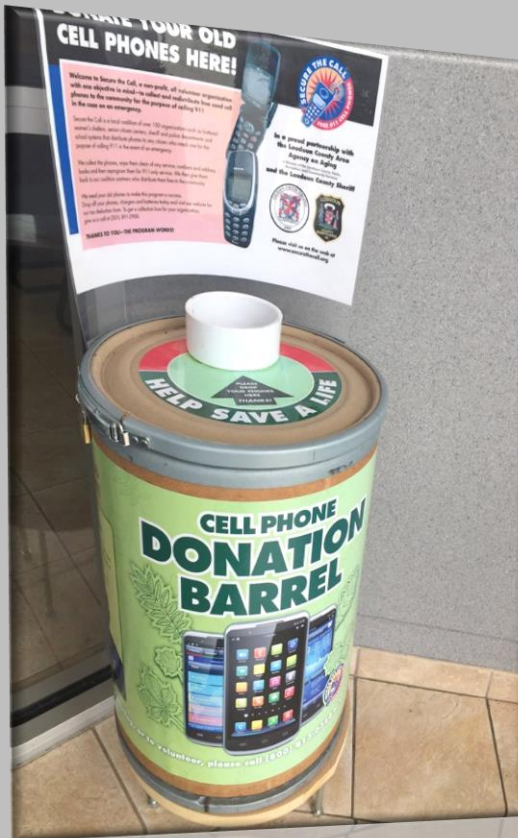
Dulles South Sheriff's Station
25216 Loudoun County Parkway, South Riding

Loudoun Sheriff's Office Administration Building
803 Sycolin Road, Leesburg

Eastern Loudoun Sheriff's Station
46620 E. Frederick Drive, Sterling

University Station
45299 Research Place, #100, Ashburn

**Drop off is available at these current locations
Monday-Friday, from 8:30 a.m. to 5 p.m.**





LCSO ONLINE REPORTING

WWW.SHERIFF.LOUDOUN.GOV



ALERT LOUDOUN



FIND MY STATION



CRIME MAPS & STATS



Report a Crime Online FAQ's ▶

[Home](#) > Report A Crime

Loudoun Sheriff's Office Online Crime Reporting System

Report a Crime Online

Welcome to the Loudoun County Sheriff's Office Citizens Online Police Reporting System. **If this is an Emergency or a crime is in progress/just occurred, please call 911.** Using this online citizen crime reporting system allows you to submit a report without leaving your home; however, not every crime can be reported. Please confirm the following to find out if online citizen crime reporting is right for you:

- This is not an emergency?
- This incident occurred within Loudoun County?
- This is not a motor vehicle crash or hit and run?

If you answered yes to all of the above questions, you are ready to file your report online. Please make sure to turn off your pop-up blocking software before filing the report. If you answered no to any of the questions, please look at our [Online Crime Reporting Frequently Asked Questions](#) section. Upon completion of this report process you will:

- See the words: "Your online police report has been submitted" showing that your report is complete.
- Be given a temporary report number.
- Be able to print a copy of the temporary report to keep for your records.

Please Note:

- All cases filed using the Citizen's Online Crime Reporting System will be reviewed.
- Upon review, if further investigation of your case is needed, you may be contacted.
- **Filing a false police report is a CRIME.**

Anyone found to have submitted a false police report will be prosecuted under the authority of Virginia State Code §18.2-461, which shall be punishable as a Class 1 misdemeanor. Maximum possible penalty is one year in jail and/or \$2,500 fine. The Loudoun County Sheriff's Office Citizen's Online Crime Reporting System accepts the following types of incidents:

- | | | |
|--|--|---|
| <input type="checkbox"/> Alcohol Violations | <input type="checkbox"/> Civil Disputes | <input type="checkbox"/> Credit Card Fraud |
| <input type="checkbox"/> Destruction of Property | <input type="checkbox"/> Fraud/False Pretenses | <input type="checkbox"/> Harassing Calls/Emails |
| <input type="checkbox"/> Identity Theft | <input type="checkbox"/> Theft | <input type="checkbox"/> Theft From Vehicle |
| <input type="checkbox"/> Lost Property | <input type="checkbox"/> Narcotics Activity | <input type="checkbox"/> Suspicious Event/Circumstances |

[Please Click Here to Start Your Online Report](#)

[Please click here for Traffic Complaints](#)

[Please click here for Agency Questions or Concerns](#)

Incident Type	Definition	Examples
Alcohol Violation	When alcohol is consumed by a person under the age of 21, sold to a person under the age of 21 or purchased for a person under the age of 21.	Underage parties where persons less than 21 are consuming alcohol, locations where it is believed persons less than 21 are being sold alcohol or where persons are suspected of purchasing alcohol for those less than 21 years of age.
Civil Dispute	A disagreement between people or groups in which no criminal laws are broken.	Child custody disputes, neighbor disputes, common property disputes, etc.
Credit Card Fraud	Occurs when the credit card or credit card number(s) are used fraudulently without the consent of the cardholder.	Your wallet is lost or stolen and purchases are made on your credit card without your consent. An unauthorized purchase appears on your credit card statement from an online retailer.
Credit Card Theft	Taking or obtaining of credit card(s), or credit card number(s), with the intent to use them fraudulently.	Your credit card is stolen from your person or your credit card number is stolen by an unknown person.
Destruction of Property/Vandalism	The act of changing, modifying defacing public or private property.	A vehicle was damaged on the exterior, but no parts were removed or entry was made into the vehicle.
Fraud/False Pretense	Fraudulently obtaining or selling goods and services.	Construction work intentionally undone. False internet products or returns. Non-delivery of tickets.
Harassing Phone Calls/Emails	Unwanted phone calls or e-mail of an annoying, harassing nature.	Immediate phone hang-ups, obscene language, etc. with no known suspects.
Identity Theft	Obtaining another's personal identifying information and using it to obtain credit, goods or services.	Someone obtains a credit card using your Social Security Number or obtains phone service using your personal information.
Larceny/Theft	Your property is taken without your permission.	Someone takes your cellular phone without permission. Lost property is not a theft.
Lost Property	Property is missing or lost.	This is not theft of property. Does not include lost passports, social security cards or driver's licenses.
Narcotics Activity	Suspected narcotics activity.	Includes suspected sales of narcotics, traffic indicating the sale of narcotics, consumption of illegal narcotics.
Shoplifting	Property is taken from a business without paying.	Someone steals consumable product from a business and leaves without paying. This includes concealment.
Suspicious Event/Circumstance	Suspicious activity that you wish for the Sheriff's Office to know about, but is not necessarily a crime.	Someone you do not know hangs out on your street corner for several hours every afternoon. Cars that you do not recognize are parked in front of your home and then leave at all hours of the night. Your neighbor has frequent visitors that only stay for a couple of minutes at a time.





CopLogic

Online Crime Reporting Statistics



2013 COPLOGIC STATISTICS:

Total Online Reports:	1671
Hours Saved:	3342
Cost Savings:	\$125,325

2014 COPLOGIC STATISTICS:

Total Online Reports:	2355
Hours Saved:	4710
Cost Savings:	\$176,625

2015 COPLOGIC STATISTICS:

Total Online Reports:	2266
Hours Saved:	4532
Cost Savings:	\$169,950

Total Reports 2016



2016 Jan – Dec COPLOGIC STATISTICS:

Total Online Reports:	2170
Hours Saved:	4340
Cost Savings:	\$162,750

From January 2013 – December 2016, approximately 8,462 incidents have been reported using the online reporting system [CopLogic](#). This has resulted in nearly 16,924 deputy hours saved, at a cost savings of approximately **\$634.650 – MORE THAN HALF A MILLION TAXPAYER DOLLARS - thus far – in only four years!!!**





(S.A.F.E.) Operational Initiative



***S**chool **A**wareness & **F**irm **E**nforcement*

- ❑ A Sheriff's Office operational initiative that facilitates a partnership between the Loudoun County Public Schools and the Sheriff's Office to address unsafe driving behaviors in school zones during morning drop off (7:00 am – 9:30 am) and afternoon departure times (2:00 pm – 4:30 pm), throughout the school year.
- ❑ Incorporates an awareness component that uses LCSO School Resource Officers (SRO's) to work with school staff to identify on-going traffic complaints occurring in school zones.
- ❑ Incorporates an educational component that uses LCSO School Resource Officers (SRO's) to assist school staff with traffic safety messaging to both parents and/or students.
- ❑ Incorporates an enforcement component that utilizes multiple Loudoun County Sheriff's Office resources (Patrol deputies, Community Resource Officers, School Resource Officers, and the LCSO Traffic Unit) to monitor school zones for traffic violations and take firm enforcement action.





(S.A.F.E.) Operational Initiative



University Station service area schools included in the
School Awareness & Firm Enforcement
Operational Initiative:

High Schools:

*Broad Run
Stone Bridge
Riverside
Briar Woods*

Middle Schools:

*Farmwell Station
Belmont Ridge
Trailside
Eagle Ridge*

Elementary Schools:

*Ashburn
Seldons Landing
Dominion Trail
Stuart W. Weller
Newton-Lee
Hillside*

*Discovery
Belmont Station
Cedar Lane
Sanders Corner
St. Theresa's
Mill Run*





Citizen's Police Academy

A community outreach initiative designed to inform citizens and community leaders about the operations of the Loudoun County Sheriff's Office.

TOPICS DISCUSSED:

Administrative & Technical Support Division:

Emergency Communications Center (ECC)

Emergency Operations Center (EOC)

Loudoun Co. Sheriff's Office Records Section / Employment Services Unit

Loudoun Co. Sheriff's Office Training Section

Field Operations Division:

Field Operations / Patrol

Field Operations / Community Policing

Operation Support Division:

OSD / School Resource Officers

OSD / Traffic Unit

OSD / SWAT Unit

OSD / Crime Prevention Section

OSD / K-9 Unit

OSD / Youth Services Section

Criminal Investigations Division:

CID / Robbery & Homicide Unit

CID / Financial Crimes Unit

CID / Crime Scene Unit

CID / Juvenile & Sex Crimes Unit

CID / Tactical Enforcement Unit

CID / Computer Forensics Unit

**** 40th Citizen's Police Academy**
Enrollment begins August of 2017
contact Emir Bekric
emir.bekric@loudoun.gov





Station Detectives



Burglary and stolen vehicle – Det. Hall

Two males, from Fairfax County, were in the area of Bozman Ter, Crucible Ct and Cheltenham Cir checking door handles and taking items from inside of vehicles. During their time in this area, they entered an open garage which gave them access to inside the house. The victim observed inside the house as they looked for car keys and contacted LCSO. The two suspects were able to leave in a stolen vehicle from the nearby street of Crucible due to the keys being left in the unlocked vehicle overnight. Later that night, these same two suspects were approached by law enforcement after breaking into an associate's residence and assaulting two individuals and were taken into custody after a foot pursuit. They were tied to numerous vehicle tampering calls from the Cheltenham Cir area as well.





Station Detectives



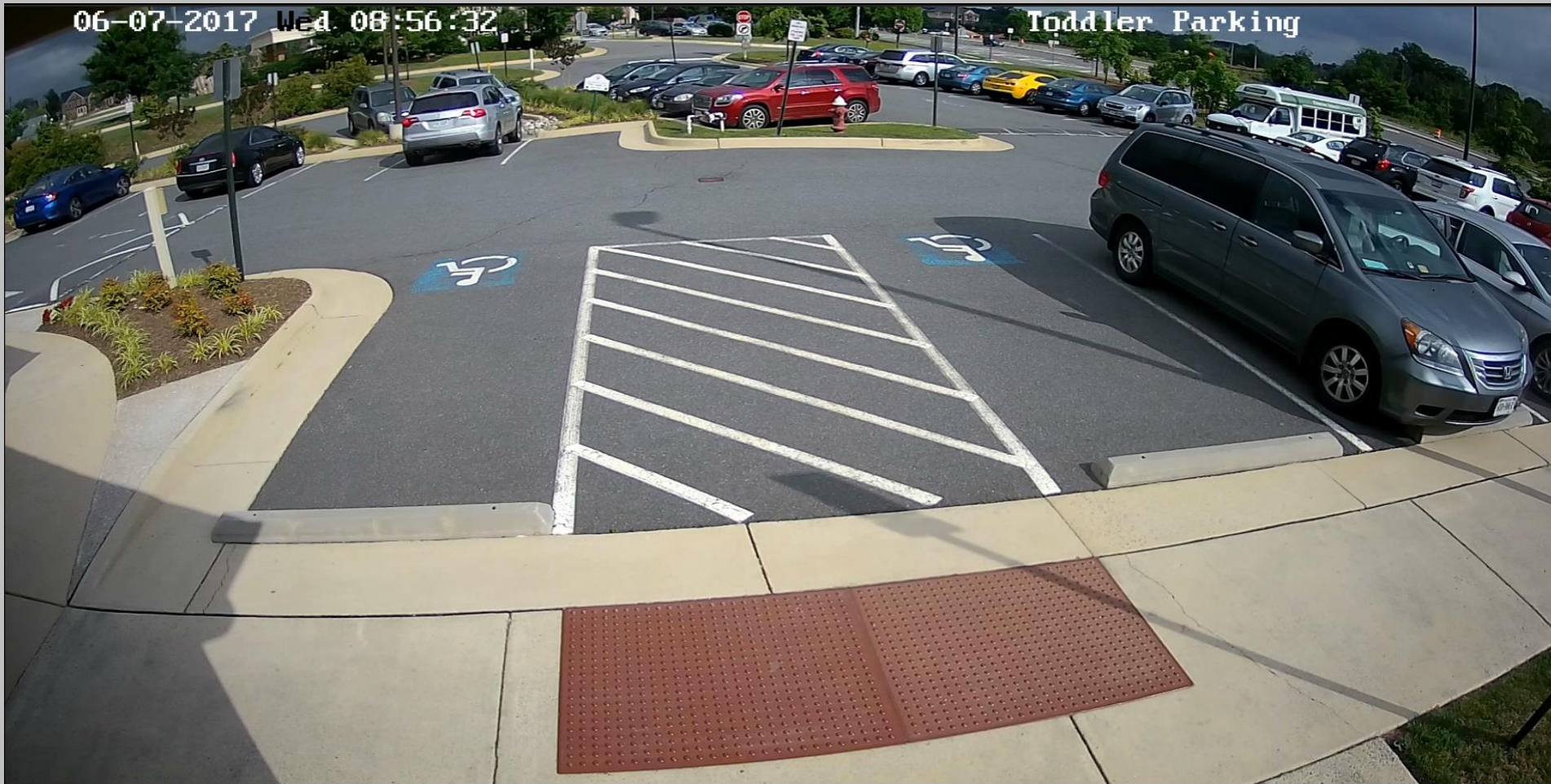
Day Care Larceny/ Fraud Cases Det. Wealand

Suspects associated with the *Felony Lane Gang*, a nationally organized criminal enterprise, operated in this area in the month of June. They target vehicles at day care centers or schools. As the parent takes their child into the school, leaving their purse or wallet in the vehicle, they drive or walk up to the vehicle and make entry by force if necessary. They then use the stolen check books and driver's licenses to drain victims bank accounts at banks throughout the Mid Atlantic region. They use rental vehicles with stolen license plates in an effort to avoid identification. Detective Wealand is working with Maryland Park Police, Fairfax County Police Dept., and Secrete Service in an effort to identify the group operation in this region.





Station Detectives





Station Detectives



Sgt. Dan Selby

571-258-3363

daniel.selby@loudoun.gov

Det. Michael Hall

571-258-3043

michael.hall@loudoun.gov

Det. Megan Wealand

571-258-3257

megan.wealand@loudoun.gov

Det. Nicholas Campbell

703-737-8707

nicholas.campbell@loudoun.gov





Auto Tampering

The Sheriff's office continues to receive reports of larceny from vehicles. In many cases the vehicles were left unlocked. In some instances, entry is made into garages and homes by accessing the garage door openers which people regularly leave in their vehicles.



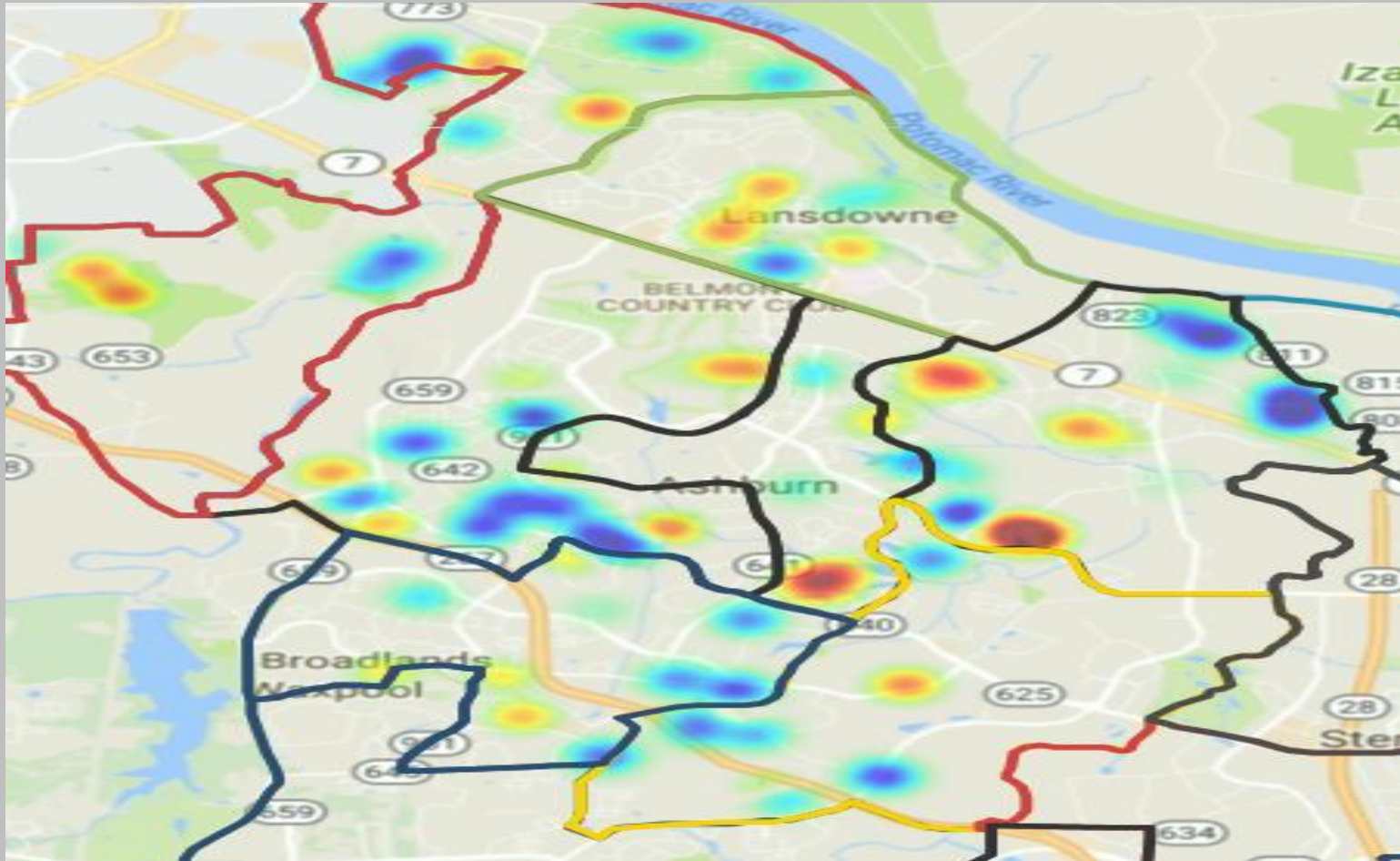
**PLEASE LOCK YOUR VEHICLES WHEN
PARKED AND NOT IN USE.**





Heat Map

Larceny from Auto 2017





REMINDER



The Loudoun County Sheriff's Office **#9PMRoutine**

- *Lock personal vehicles*
- *Secure valuables in vehicle trunk*
- *Close/Lock residential garages and doors*
- *LCSO Non-Emergency Number (703)777-1021*
- *Safely secure all firearms* **** Not in Vehicles ****
- ***And.....Please share the #9PMRoutine information with your community to help prevent property crimes in your neighborhood !!***





Community Resource Officers

CONTACT:

DEPUTY ANDREW RAUGHLEY

Andrew.Raughley@Loudoun.gov

DEPUTY RYAN THOMASSON

Robert.Thomasson@Loudoun.gov

Or your community HOA for more information





Crime Prevention Unit



DFC Ethan Martin, CCP

Youth Services

ethan.martin@Loudoun.gov

703-777-0477

Help us, Serve you





Phone Scams

Scammers Claiming to be Law Enforcement & Utility Companies!

Law Enforcement: Recently several residents reported receiving calls from a person claiming to be a Sgt. Jackson with the warrants division of the Loudoun Sheriff's Office. The caller claims you have a warrant issued for your arrest and you need to pay monies with a money card.

Utility Company: Several residents and businesses reported receiving calls from a person claiming to be with Dominion Power. In each case, the caller said the victim owed back payments and their electricity would be disconnected if they did not pay.

Utility companies and government agencies will NOT contact you demanding immediate payment by money cards!





Scams



Recent Increase in Intimidation/Extortion Scams

The Grandparent: Relative in Legal/financial/medical crisis. More recently residents have received calls that their daughter was kidnapped...

IRS: Need to pay fines due to back taxes owed. In some cases caller claims you will be arrested if you do not pay fines...

Process Server: Asks for “court” payments, caller often claims to be with a local law enforcement agency and threatens arrest...

Payday Loans: Calls about delinquent payments. May advise of warrants for non-payment.





Help Fight Crime, Support Crime Solvers



The mission of Loudoun County Crime Solvers is to promote community participation by assisting local law enforcement agencies, through a partnership with the community and the media, to apprehend and convict criminals through a system of cash rewards.

Loudoun County Crime Solvers depends on private donations and your donation to the nonprofit organization is critical to support this mission.

Residents interested in supporting Loudoun Crime Solvers are asked to please send a check to:

**Loudoun County Crime Solvers
P.O. Box 3343
Leesburg, VA 20177**

Donations are tax-deductible. Thank you!





Loudoun County Sheriff's Office

Thank you for your
continued support!

