

**Quarterly Community Meeting
Tuesday November 7th, 2017
7-8 PM**



**University Station
45299 Research Place, Suite 100
Ashburn VA 20147
571-258-3000**





SHERIFF
MICHAEL L. CHAPMAN





LCSO Mission Statement

SERVICE

TECHNOLOGY

LOUDOUN COUNTY SHERIFF'S OFFICE MISSION STATEMENT

The Loudoun County Sheriff's Office will strive to continuously improve safety and law enforcement services to all members of our community through the Step Up Strategy of improved service, technology, efficiency and professionalism.

We will work interactively with federal, state, and other local law enforcement authorities to vigorously and fairly enforce criminal laws by sharing capabilities, strategies and assets.

We will partner with community services groups and human services agencies to implement strategies that improve the quality of life for County residents, businesses and visitors.

Finally, we will engage our community through courteous and proactive outreach and communication, and work diligently to constantly improve our professionalism.

Every member of the Loudoun County Sheriff's Office is expected to contribute to the furtherance of this mission.

Michael L. Chapman
Sheriff, Loudoun County



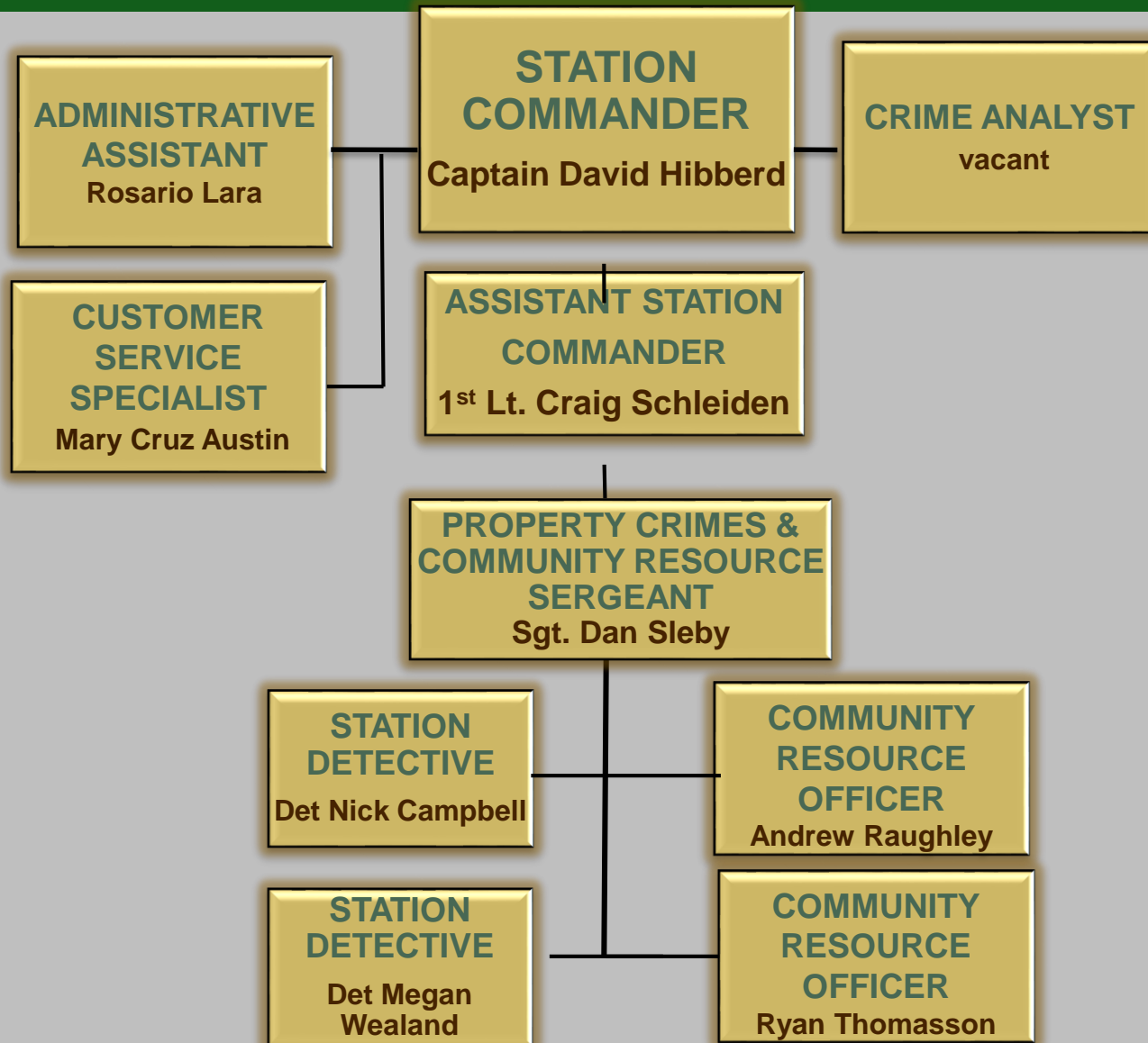
EFFICIENCY

PROFESSIONALISM



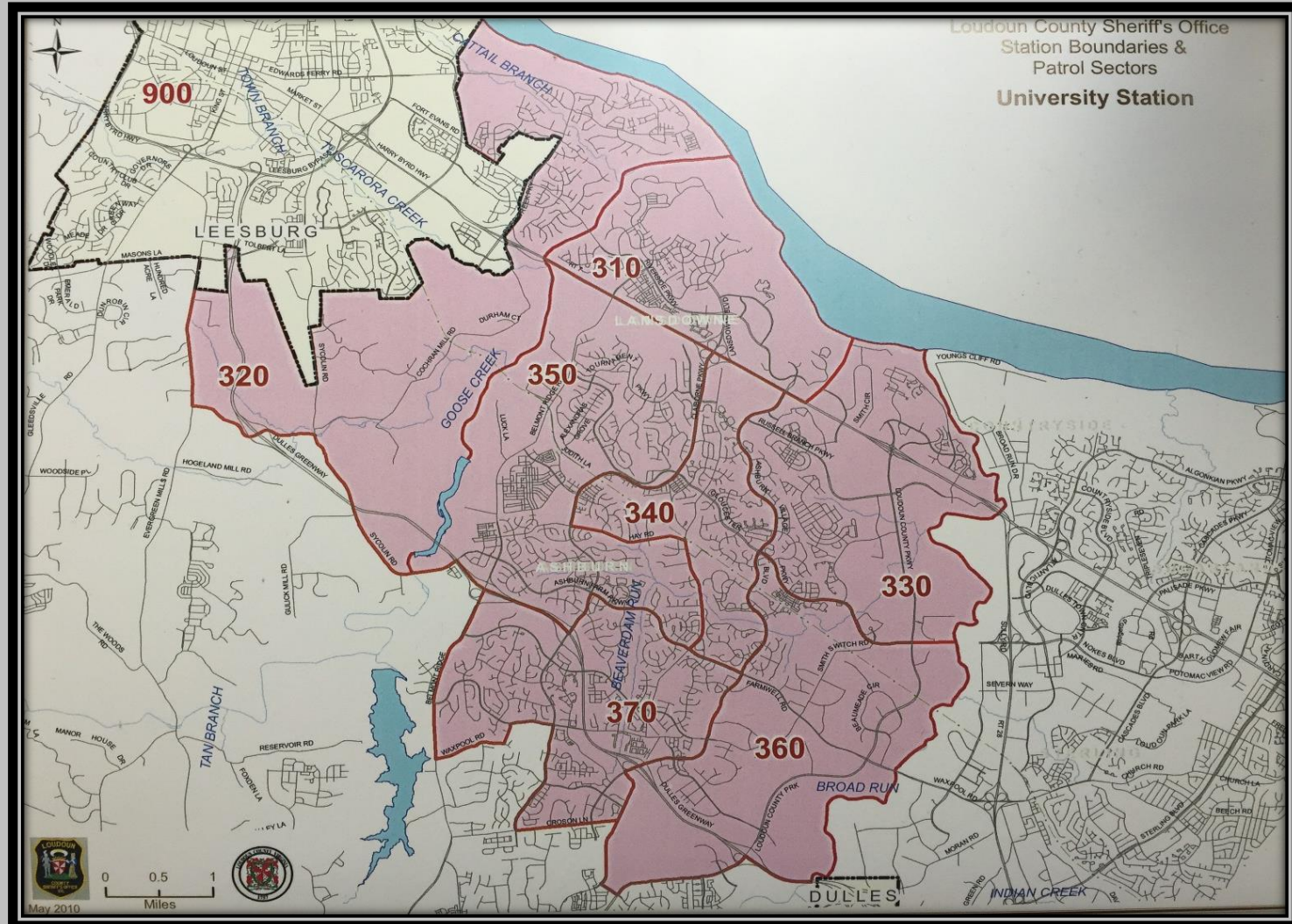


USS Organizational Chart





University Station Beats





New Ashburn Station Location

20272 Savin Hill Drive
Ashburn, VA

*Spring
2018*

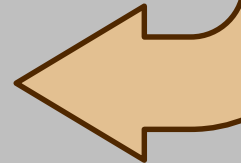




New Ashburn Station Progress



CONSTRUCTION UNDERWAY





LCSO Website – sheriff.loudoun.gov



Website Offers Innovative & Interactive Features in a More User-Friendly Layout

- **Report a Crime Online**
 - ✓ Report Certain Crimes Like Larceny, ID Theft & Vandalism via the Internet.
- **Community Resource Directory**
 - ✓ Search Community Resources for Health & Human Services in Loudoun County.
- **Case Follow-Up**
 - ✓ Victim's can Follow-up & Inquire on Status of Case via the Website.
- **Find My Station**
 - ✓ A Searchable Map allowing Residents to find their nearest Station providing services such as Fingerprinting & Background Checks.
- **Traffic Incident Mapping Using Online Mapping Resources**



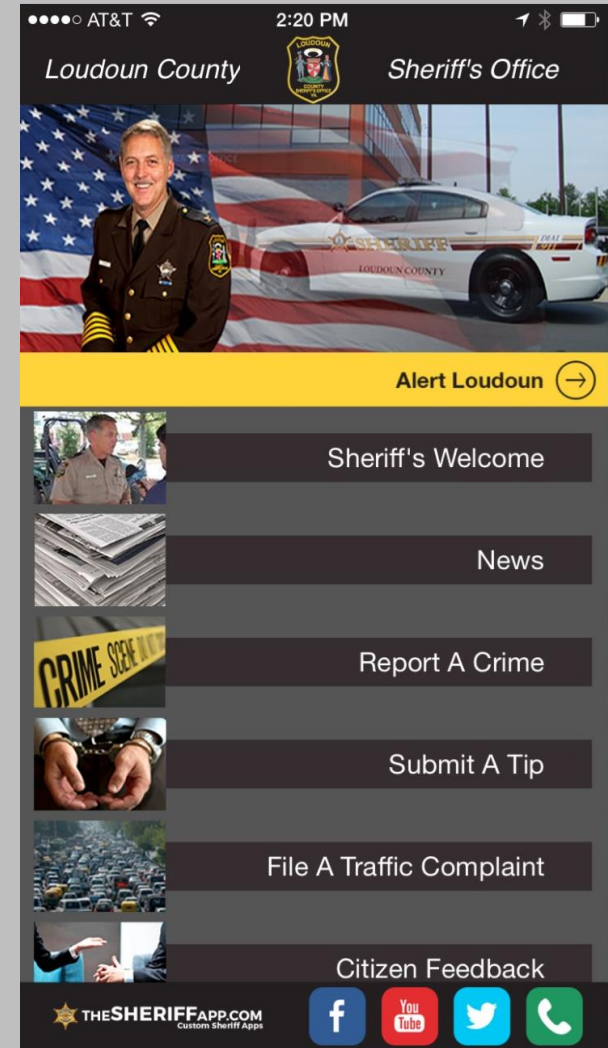


Loudoun County Sheriff's Office App



PUT CRIME INFORMATION AT YOUR FINGERTIPS

- Submit Crime Tips
- Report a Crime
- Make a Traffic Complaint
- Provide Citizen Feedback
- Learn the Latest Public Safety News
- Review Current Traffic Incidents Dispatched by the LCSO
- Receive Non-Emergency Community Notifications
- Learn of Upcoming Meetings & Events Held by the LCSO





CALL if You Can

TEXT 911

TEXT if You Can't



Beginning 03/01/2016, in all of Loudoun County and its incorporated towns.

If you are deaf, hard of hearing, or have a speech disability.

If you cannot speak due to injury or medical condition.



HOW TO TEXT TO 911:

- ☐ Enter only 911 in the “To” field.
- ☐ Text should be short and include:
 - Location
 - Type of Emergency
- ☐ Be prepared to answer questions and follow Call Taker’s instructions.
- ☐ Photos and videos cannot be sent to 911.
- ☐ Texts to 911 cannot include more than 1 recipient.
- ☐ TEXT 911 is available for:
 - ❖ FIRE
 - ❖ MEDICAL
 - ❖ POLICE

If you are in a threatening situation.

If your mobile reception signal is poor.





Sheriff's Office Technology



Alert Loudoun 2.0

Information You Need Wherever You Are

Emergency Alerts, Traffic, Weather, County News

www.loudoun.gov/alert



- Follow Loudoun County Sheriff's Office on Facebook- www.facebook.com/loudounsheriff
- Follow LCSO on Twitter- www.twitter.com/loudounsheriff
- Follow us on Instagram- www.instagram.com/loudounsheriff
- Follow Loudoun County Traffic Incident Activity- www.sheriff.loudoun.gov/traffic
- Mobile Sheriff's Office App





CopLogic

Online Crime Reporting Statistics



2013 COPLOGIC STATISTICS:

Total Online Reports:	1671
Hours Saved:	3342
Cost Savings:	\$125,325

2014 COPLOGIC STATISTICS:

Total Online Reports:	2355
Hours Saved:	4710
Cost Savings:	\$176,625

2015 COPLOGIC STATISTICS:

Total Online Reports:	2266
Hours Saved:	4532
Cost Savings:	\$169,950

2016 COPLOGIC STATISTICS:

Total Online Reports:	2170
Hours Saved:	4340
Cost Savings:	\$162,750

Total Reports 2017



2017 COPLOGIC STATISTICS:

January - October

Total Online Reports:	1900
Hours Saved:	3800
Cost Savings:	\$142,500.00

From January 2013 – June 2017, approximately 9,588 incidents have been reported using the online reporting system [CopLogic](#). This has resulted in nearly 19,174 deputy hours saved, at a cost savings of approximately **\$719,025 – almost THREE QUARTERS of a MILLION TAXPAYER DOLLARS** - thus far – *in only four and a half years!!!*





Prescription Drug Take Back



U.S. DEPARTMENT OF JUSTICE ★ DRUG ENFORCEMENT ADMINISTRATION
OFFICE OF DIVERSION CONTROL

National Prescription Drug Take-Back Day Loudoun County Sheriff's Office in conjunction with the Drug Enforcement Administration October 28, 2017

10am to 2pm



This year with the community's help,
a result of **41 bags / 876 Lbs** of unused
or expired medications were turned in and
destroyed keeping them out of the hands of
unintended persons.





LCSO Medication Disposal Drop Box

DO YOU HAVE UNUSED OR EXPIRED MEDICATIONS ?



YOU MAY DROP OFF:

- Prescription Medications
- Prescription Patches
- Over the Counter Medications
- Vitamins
- Sample Medications
- Medications for Pets

THE FOLLOWING ARE NOT ACCEPTED:

- Needles (Sharps)
- Liquid Medications
- Aerosol Containers
- Inhalers
- Ointments and Lotions
- Medications from Businesses





Narcotics Tip-Line



The Loudoun County Sheriff's Office, as part of the regional heroin initiative called the Heroin Operations Team (HOT), has expanded the agency's Narcotics tip-line as a 'HOT'-line for suspected drug activity and drug usage in the county.

Loudoun residents are encouraged to call 1-833-HOT-TIPS (1-833-468-8477) with any information regarding narcotics activity.





Secure the Call



Have an Old Unused Cell Phone that You No Longer Need?

The Loudoun County Sheriff's Office has four locations with donation barrels:

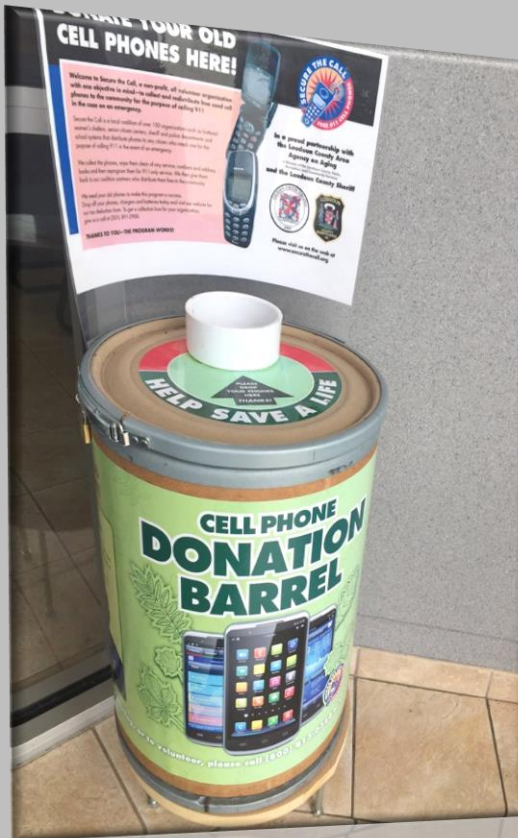
Dulles South Sheriff's Station
25216 Loudoun County Parkway, South Riding

Loudoun Sheriff's Office Administration Building
803 Sycolin Road, Leesburg

Eastern Loudoun Sheriff's Station
46620 E. Frederick Drive, Sterling

University Station
45299 Research Place, #100, Ashburn

**Drop off is available at these current locations
Monday-Friday, from 8:30 a.m. to 5 p.m.**





Station Detectives



Detective Hall – Vehicle Larcenies and Thefts

After a series of auto larcenies and vehicle tampering calls for service, that involved a number of Ashburn and Dulles South residents, Detective Hall worked with Fairfax County Police Department detectives to identify suspects that were attributed to a large number of these complaints. In a number of these calls, firearms were left in unsecured vehicles overnight and the thefts occurred after the residents went to bed. After a multitude of search warrants on the suspects residences, a large amount of firearms, ammunition, and gear were recovered hindering efforts for the group to sell or use the weapons in the community.





Station Detectives



Detective Wealand - Burglary

On September 10th, 2017 Foam City was burglarized by four juveniles. A citizen provided information that the four juvenile suspects were bragging at school and on Instagram that they had broken into the store and had stolen clothing and shoes. An investigation into these individuals lead to the confirmation of their involvement through follow up interviews and from postings on Instagram. This investigation also provided Fairfax County Police Department with information that the same group were also involved in another burglary in their jurisdiction as well as some larceny from vehicle cases. Juvenile petitions were issued with court hearings pending





Station Detectives



Detective Campbell – Stolen Auto and Identity Theft

There were a number of vehicles that were stolen and they were often left unlocked with a spare key in the glove box for convenience. After one of these vehicles were stolen from an Ashburn neighborhood, checks that were inside the vehicle were used by the suspect, Mackia Brown. She was captured on video at the bank and charged with fraud charges. Shortly thereafter, her girlfriend, Tazhon Bradley was found at her job in possession of another stolen vehicle from Ashburn.





Station Detectives



Sgt. Dan Selby
571-258-3363
daniel.selby@loudoun.gov

Det. Megan Wealand
571-258-3257
megan.wealand@loudoun.gov

Det. Nicholas Campbell
703-737-8707
nicholas.campbell@loudoun.gov





(S.A.F.E.) Operational Initiative



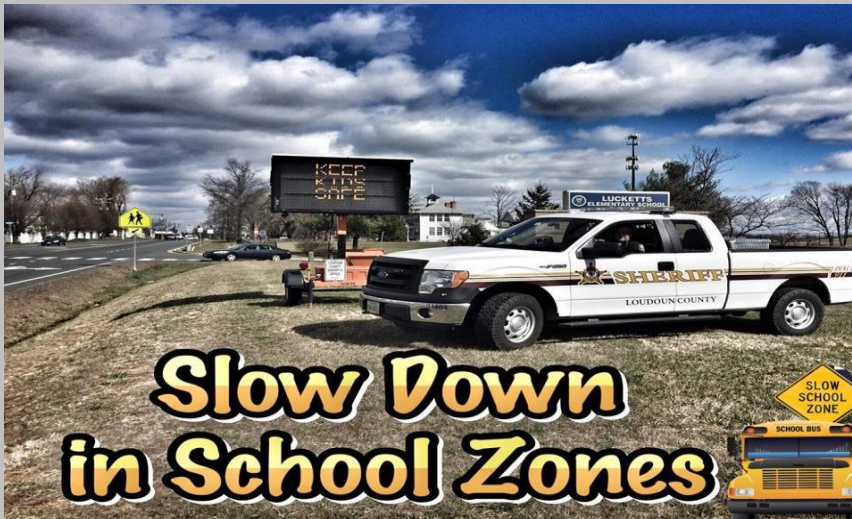
***S**chool **A**wareness & **F**irm **E**nforcement*

- ❑ A Sheriff's Office operational initiative that facilitates a partnership between the Loudoun County Public Schools and the Sheriff's Office to address unsafe driving behaviors in school zones during morning drop off (7:00 am – 9:30 am) and afternoon departure times (2:00 pm – 4:30 pm), throughout the school year.
- ❑ Incorporates an awareness component that uses LCSO School Resource Officers (SRO's) to work with school staff to identify on-going traffic complaints occurring in school zones.
- ❑ Incorporates an educational component that uses LCSO School Resource Officers (SRO's) to assist school staff with traffic safety messaging to both parents and/or students.
- ❑ Incorporates an enforcement component that utilizes multiple Loudoun County Sheriff's Office resources (Patrol deputies, Community Resource Officers, School Resource Officers, and the LCSO Traffic Unit) to monitor school zones for traffic violations and take firm enforcement action.





University Station service area schools included in the
School Awareness & Firm Enforcement
Operational Initiative:



During our last event's efforts, the Community Resource Officers and SROs made contacts that yielded **47** citations issued with **35** warnings given.

High Schools:

*Broad Run
Stone Bridge
Riverside
Briar Woods*

Middle Schools:

*Farmwell Station
Belmont Ridge
Trailside
Eagle Ridge*

Elementary Schools:

*Ashburn
Seldons Landing
Dominion Trail
Stuart W. Weller
Newton-Lee
Hillside*

*Discovery
Belmont Station
Cedar Lane
Sanders Corner
St. Theresa's
Mill Run*





Auto Tampering

The Sheriff's office continues to receive reports of larceny from vehicles. In many cases the vehicles were left unlocked. In some instances, entry is made into garages and homes by accessing the garage door openers which people regularly leave in their vehicles.



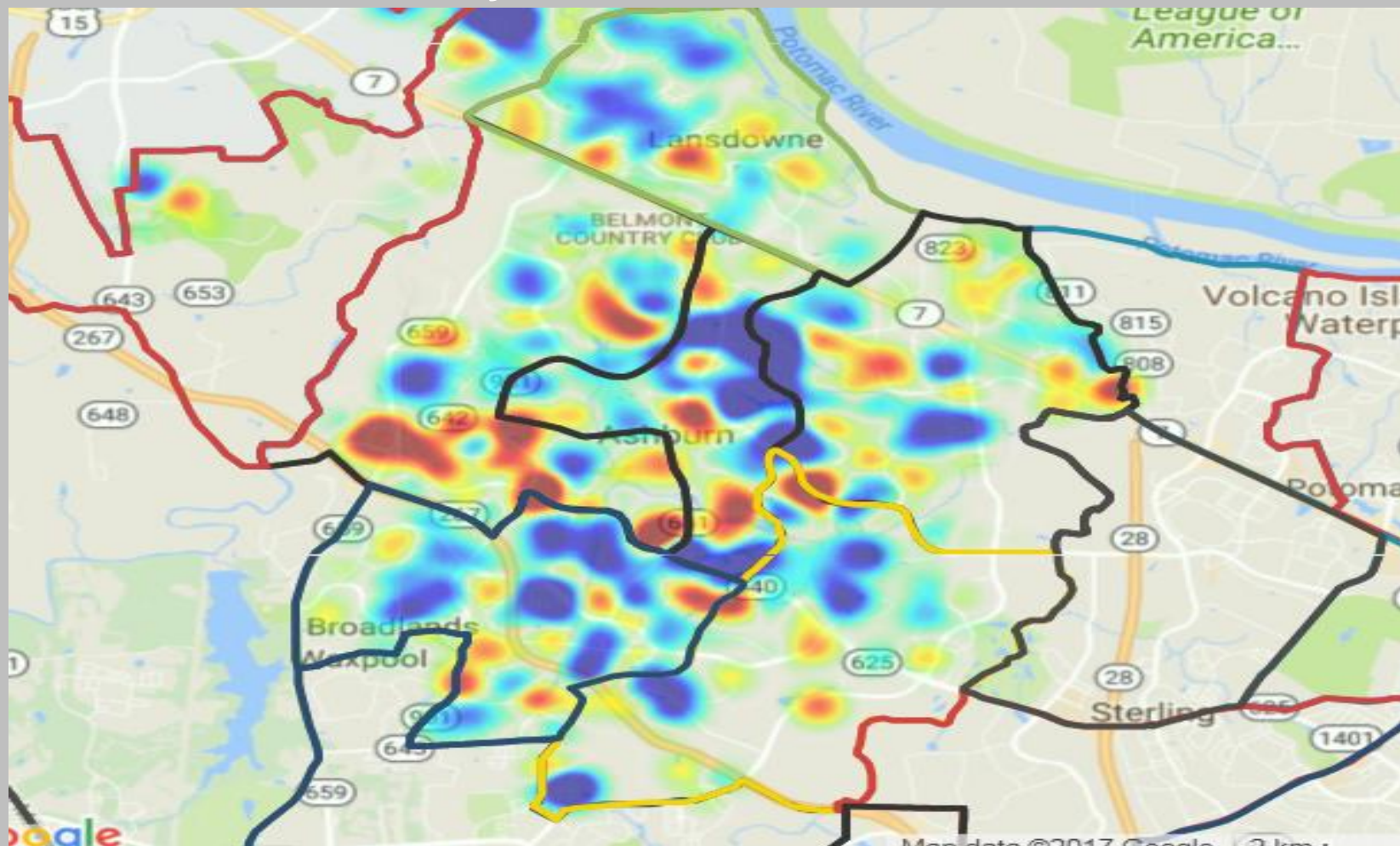
**PLEASE LOCK YOUR VEHICLES WHEN
PARKED AND NOT IN USE.**





Heat Map

Larceny from Auto 2016-2017





REMINDER



The Loudoun County Sheriff's Office **#9PMRoutine**

- *Lock personal vehicles*
- *Secure valuables in vehicle trunk*
- *Close/Lock residential garages and doors*
- *LCSO Non-Emergency Number (703)777-1021*
- *Safely secure all firearms* **** Not in Vehicles ****
- ***And.....Please share the #9PMRoutine information with your community to help prevent property crimes in your neighborhood !!***





Holiday Burglary Prevention



Criminals rely on predictable behavior to ensure the success of their crime !!!

- Unsecured windows are easy targets for burglars. Don't run lighting cords or extension cords through windows that would prevent them from being locked & secured.
- Burglars observe your holiday related trash for expensive items that have been received. Cut up all boxes and packaging with identifying labels and discard them in dark colored trash bags.
- If travelling during the holiday season, use timers for your holiday lighting so lights go on and off on their own.





Phone Scams

Scammers Claiming to be Law Enforcement & Utility Companies!

Law Enforcement: Recently several residents reported receiving calls from a person claiming to be a Sgt. Jackson with the warrants division of the Loudoun Sheriff's Office. The caller claims you have a warrant issued for your arrest and you need to pay monies with a money card.

Utility Company: Several residents and businesses reported receiving calls from a person claiming to be with Dominion Power. In each case, the caller said the victim owed back payments and their electricity would be disconnected if they did not pay.

Utility companies and government agencies will NOT contact you demanding immediate payment by money cards!





FINANCIAL CRIMES SCAMS



PROTECT YOUR MONEY: Treat your MoneyPak like Cash. Use your MoneyPak Number only for your accounts and ONLY with partners listed at www.moneypak.com. If anyone else asks for your MoneyPak number or information from your receipt, IT IS A SCAM and Green Dot is not responsible for paying you back.





Help Fight Crime, Support Crime Solvers



The mission of Loudoun County Crime Solvers is to promote community participation by assisting local law enforcement agencies, through a partnership with the community and the media, to apprehend and convict criminals through a system of cash rewards.

Loudoun County Crime Solvers depends on private donations and your donation to the nonprofit organization is critical to support this mission.

Residents interested in supporting Loudoun Crime Solvers are asked to please send a check to:

**Loudoun County Crime Solvers
P.O. Box 3343
Leesburg, VA 20177**

Donations are tax-deductible. Thank you!





Community Resource Officers

CONTACT:

DEPUTY ANDREW RAUGHLEY

Andrew.Raughley@Loudoun.gov

DEPUTY RYAN THOMASSON

Robert.Thomasson@Loudoun.gov

Or your community HOA for more information





Crime Prevention Unit



DFC Ethan Martin, CCP

Youth Services

ethan.martin@Loudoun.gov

703-777-0477

Help us, Serve you





Loudoun County Sheriff's Office

**Thank you for your
continued support!**

