

Quarterly Community Meeting
Tuesday February 7, 2017
7-8 PM



University Station
45299 Research Place, Suite 100
Ashburn VA 20147
571-258-3000





**SHERIFF
MICHAEL L. CHAPMAN**





LCSO Mission Statement

SERVICE

TECHNOLOGY

LOUDOUN COUNTY SHERIFF'S OFFICE MISSION STATEMENT

The Loudoun County Sheriff's Office will strive to continuously improve safety and law enforcement services to all members of our community through the Step Up Strategy of improved service, technology, efficiency and professionalism.

We will work interactively with federal, state, and other local law enforcement authorities to vigorously and fairly enforce criminal laws by sharing capabilities, strategies and assets.

We will partner with community services groups and human services agencies to implement strategies that improve the quality of life for County residents, businesses and visitors.

Finally, we will engage our community through courteous and proactive outreach and communication, and work diligently to constantly improve our professionalism.

Every member of the Loudoun County Sheriff's Office is expected to contribute to the furtherance of this mission.

Michael L. Chapman
Sheriff, Loudoun County



EFFICIENCY

PROFESSIONALISM





New Ashburn Station Location

20272 Savin Hill Drive
Ashburn, VA

Fall 2017

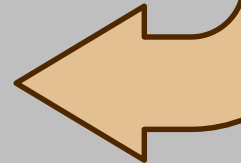




New Ashburn Station Progress

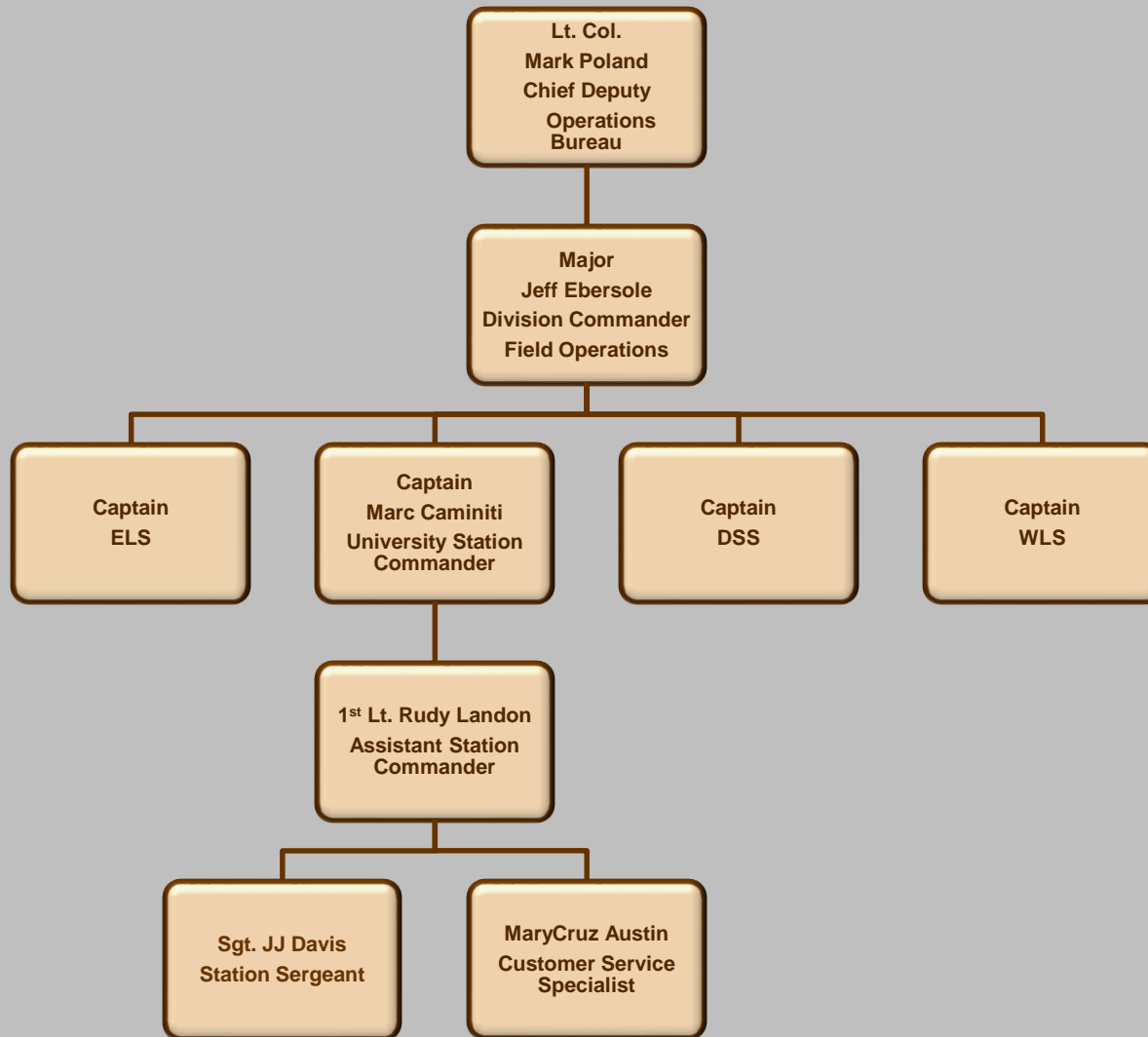


CONSTRUCTION UNDERWAY





University Station Leadership

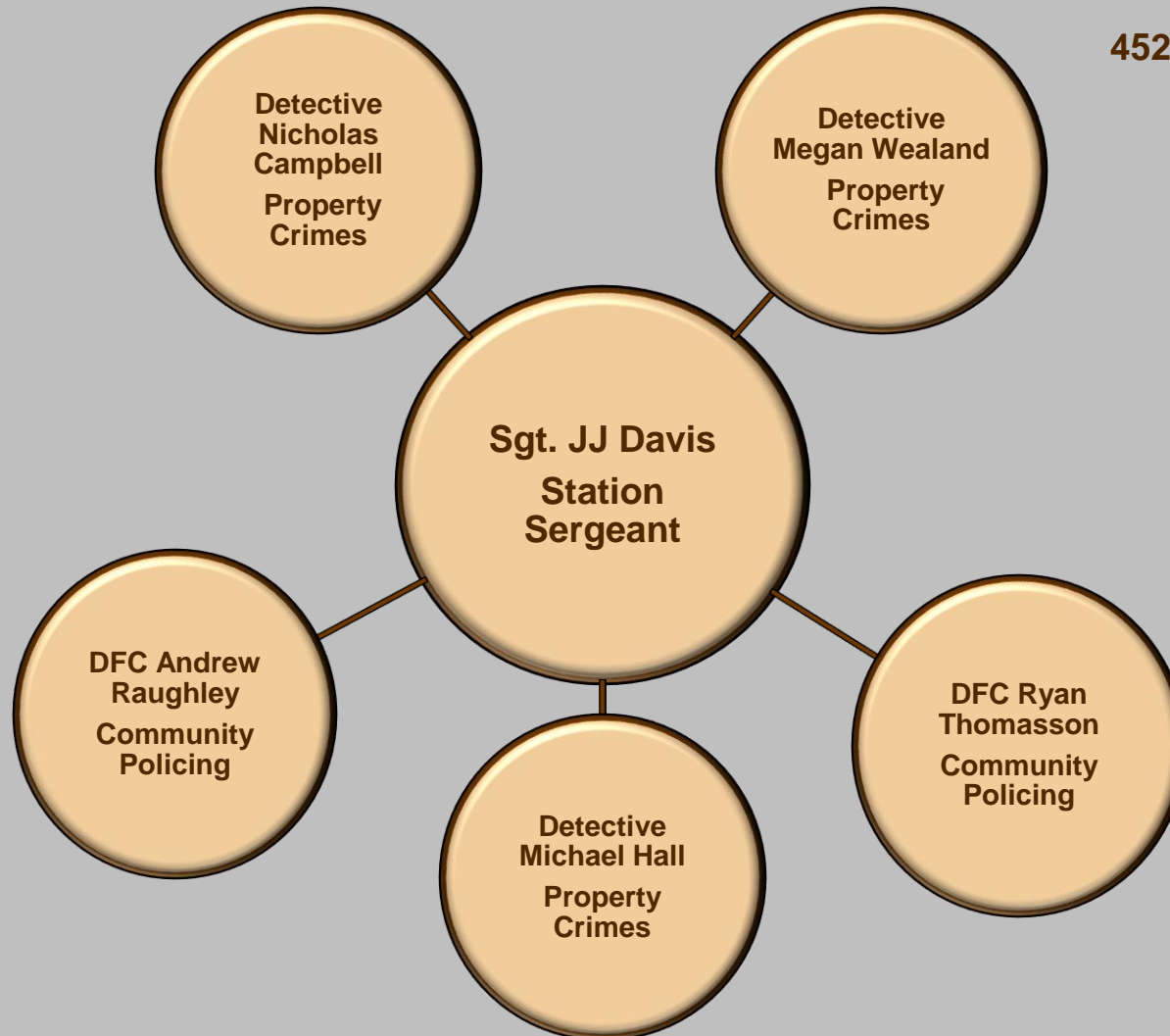




University Station Sergeant's Personnel



University Station
45299 Research Place
Ashburn, VA
571-258-3000





Community Resource Officers

CONTACT:



DEPUTY ANDREW RAUGHLEY

Andrew.Raughley@Loudoun.gov



DEPUTY RYAN THOMASSON

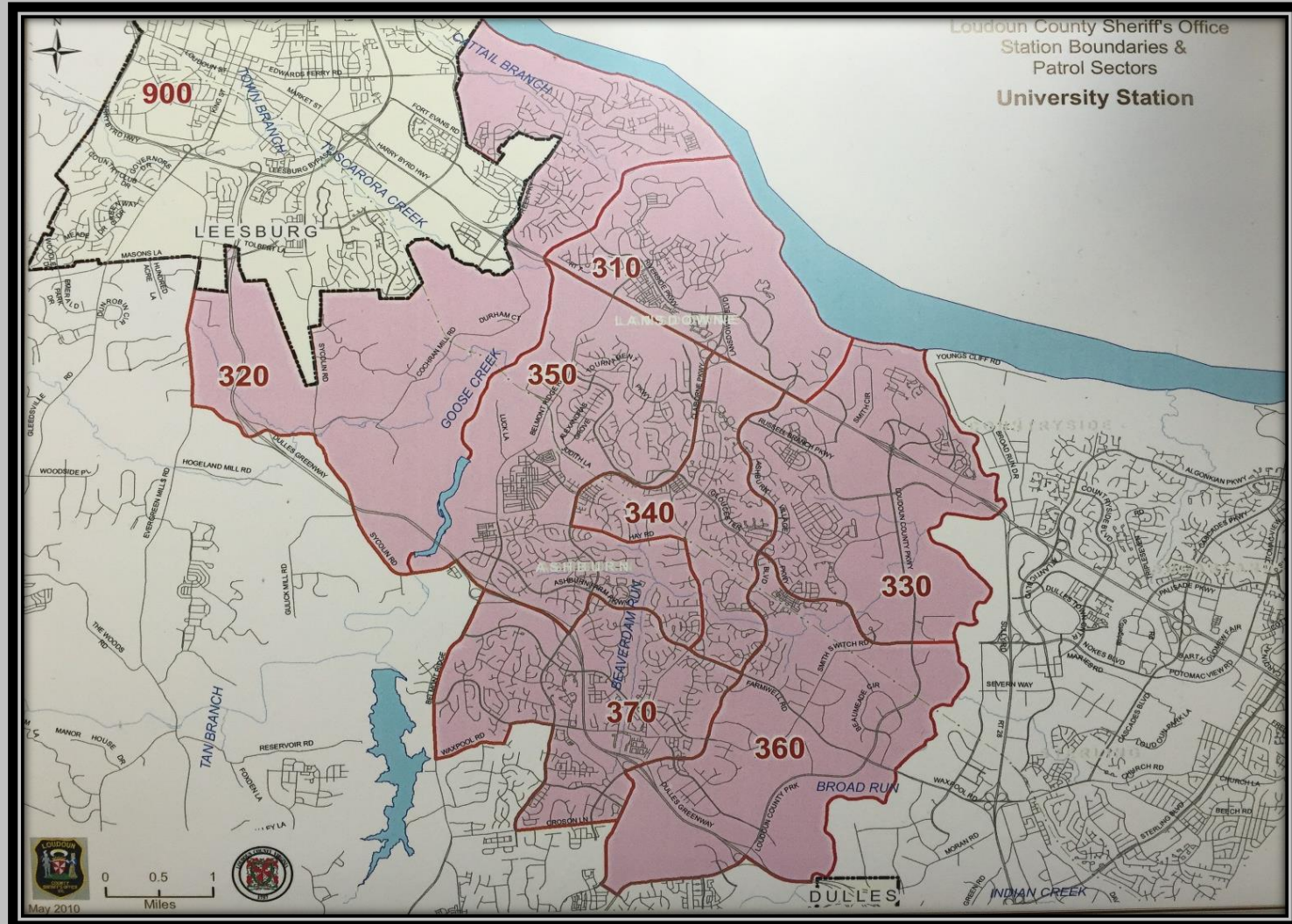
Robert.Thomasson@Loudoun.gov

Or your community HOA for more information





University Station Beats





Introduction of Special Guest



BeSMARTforKids.org

Ms. Kristin Jones

&

Ms. Amy McPike

loudounmomsdemandaction@gmail.com

The Sheriff's Office supports weapon safety, and the BeSMARTforKids.org does not represent the Sheriff's Office.





Weapons Safety Presentation



BE
SMART

A conversation about kids, guns, and safety

MOMS 
DEMAND
ACTION
FOR GUN SENSE IN AMERICA

BeSMARTforKids.org

Program made possible with funds from Everytown for Gun Safety Support Fund





Weapons Safety Presentation

WHAT YOU CAN DO:

Be

S

Secure guns
in your
homes
and vehicles

M

Model
responsible
behavior

A

Ask about
unsecured
guns in other
homes

R

Recognize
the risks
of teen suicide

T

Tell your peers
to be SMART





Weapons Safety Presentation

SMART

Model responsible behavior



Always keep your gun pointed in a safe direction.



Treat every firearm as if it is loaded.



Be sure of your target and what's beyond it.



Don't Rely on your gun's "safety."





Weapons Safety Presentation

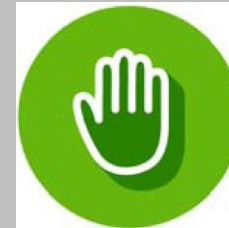


SMART

Tell your peers to be SMART



Talk to your friends
and family.



Volunteer to lead a
SMART presentation.





Crime Prevention Unit



Sergeant James Spurlock, CPP CPS
Youth Services

James.Spurlock@Loudoun.gov

703-771-5749

Help us, Serve you





FIREARM LARCENIES



Since November 2016, Loudoun County residents have reported a rash of larcenies of firearms from unlocked vehicles across the county.

In light of the great risk which this poses to our community, Loudoun County Crime Prevention Unit offers several tips for deterring thefts from vehicles.

- Keep your vehicles locked at all times. The vast majority of larcenies are from unlocked vehicles.
- Remove valuable items, including garage door openers, from vehicles when not in use, or minimally, place these items out of sight, preferably in a locked trunk or glove box.
- If your vehicle has an integrated garage door opener, park your vehicle in a garage and locked.
- If it is not possible to park in a garage, park your vehicle in a lighted area.
- If you must leave a firearm in your vehicle, use a secured lockbox, which is kept out of view, and remove any ammunition when exiting the vehicle.





PROJECT CHILDSAFE

VA CODE § 18.2-56.2. ALLOWING ACCESS TO FIREARMS BY CHILDREN; PENALTY.

IT SHALL BE UNLAWFUL:

- To recklessly leave a loaded, unsecured firearm that endangers the life or limb of any child under the age of fourteen (14) [Class 3 misdemeanor].
- To allow a child under the age of twelve (12) to use a firearm except when the child is under the supervision of an adult [Class 1 misdemeanor].

“Adult” means: parent, guardian, *loco parentis* to the child, or a person 21 years or over who has permission from either of the three to supervise the child using a firearm.





Cable Lock: Revolver Example



- ✓ Cable lock inserted though cylinder port or barrel of the revolver.
- ✓ Prevents cylinder from being seated in the weapon.
- ✓ Prevents the revolver from being discharged.





Cable Lock: Semi-Automatic Handgun Example



- ✓ Cable lock inserted through the magazine well and ejection port.
- ✓ Prevents a magazine from being inserted into the weapon.
- ✓ Prevents the action of the from functioning & prevents the weapon from being discharged.





Cable Lock: Long Gun Example



- ✓ Cable lock inserted through the magazine loading port and out through the shotgun shell ejection port.
- ✓ Prevents the action from functioning & prevents the weapon from being discharged.





Other Firearm Locking Systems





Loudoun County Heroin / Opioid 2016 Statistics



- For 2016 the Loudoun Co. Sheriff's Office saw a total of 87 opiate overdoses
- 61 of the 87 involved the use of heroin.
- 18 of the 87 were fatal overdoses.
- 17 of the 18 fatal OD's were due to heroin.

Demographics:

- Of the heroin overdoses 90% were white with 70% of those suffering an overdose being males.
- The age range was between 16 to 55 years.
- The average age for an overdose was 28.
- The most frequent age range is 20 to 29 years old.





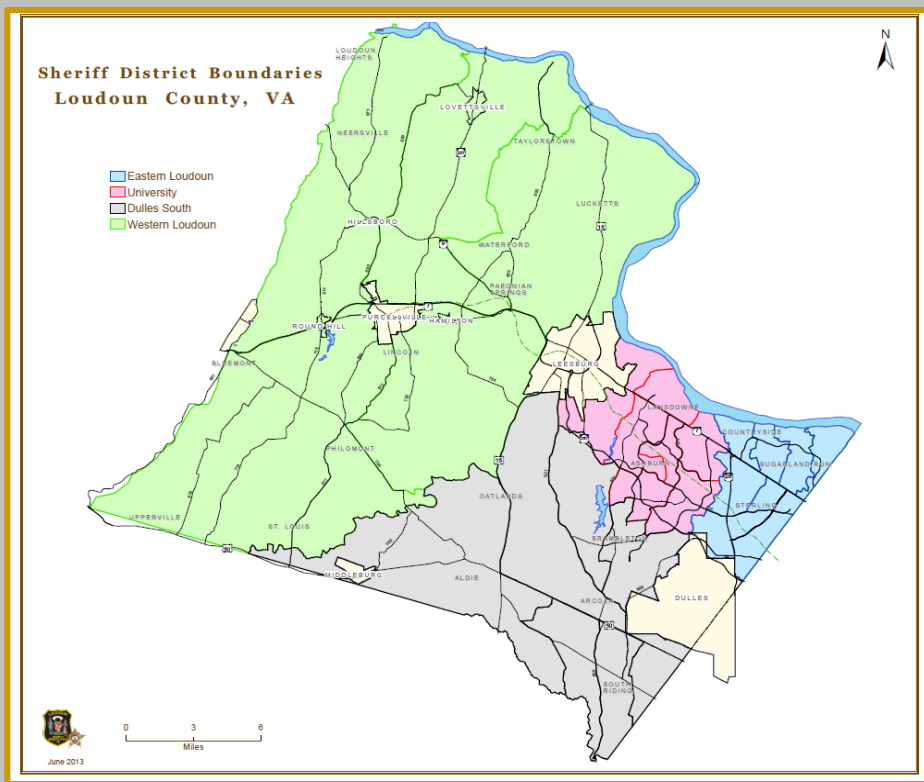
Loudoun County Heroin / Opioid 2016 Statistics



Number of Heroin Overdoses by Station

**Western
Loudoun
Station:
13
(2 of the 13 in
Purcellville)**

**Dulles South
Station:
11**



**University
(Ashburn)
Station:
13**

**Eastern
Loudoun
Station:
24**





Combating the Heroin Epidemic



ENFORCEMENT

LCSO Rapid Response Unit and Tactical Enforcement Unit conducting interdiction enforcement and investigations to combat heroin and opioid epidemic.

Assigned detectives to the DEA High Intensity Drug Trafficking Area Task Force & the FBI Safe Streets Task Force to take advantage of federal jurisdiction, intelligence, funds, equipment, staff, and other resources

Prosecute defendants on Federal charges options in lieu of State charges when more applicable & utilize multi-jurisdictional grand jury

LCSO Tactical Enforcement Unit detectives respond to every drug overdose incident to gather intelligence and search for links to illicit drug networks

Assigned a Detective to focus on prescription fraud crimes; delivers an education program for pharmacies on suspicious prescriptions





Combating the Heroin Epidemic



OUTREACH

In April 2015 formed the Heroin Operations Team with U.S. Representative Comstock, a whole-of-government approach to combating the epidemic

Participated in a regional heroin initiative in February 2016 with neighboring law enforcement agencies to target dealers and users

Developed a drug awareness program with the DEA taught to parents at Loudoun County Public School clusters. (Courses taught in 2013-2014, and in 2015-2016, and continue 2016-2017 School Year)

Held multiple heroin public forums with federal and local leaders, including recovery experts, including the nationally recognized Chris Herren Project, as part of the Project Purple Initiative, to Loudoun County in February 2016.

Brought the DEA traveling exhibit (Drugs: Costs and Consequences) to Loudoun County in 2016 for a limited engagement





Combating the Heroin Epidemic

PREVENTION

Developed a pilot program in Western Loudoun to train and equip deputies with naloxone (NARCAN) in December 2015. Naloxone is a life-saving drug that reverses the effects of an opioid overdose.

In 2016, LCSO revived 10 subjects experiencing an overdose.

NARCAN Program is being expanded to all patrol deputies in 2016-2017

Continuation of Nationwide Prescription Take-Back program in Loudoun County in coordination with the Purcellville Police Department, the Middleburg Police Department and the DEA. Since the inception of the DEA take-back program in 2010, over 8,000 pounds of unwanted and unused prescription medications have been taken off the streets of Loudoun County.





LCSO



Medication Disposal Drop Box

**DO YOU HAVE UNUSED OR EXPIRED MEDICATIONS ?
(The LCSO University Station now accepts them)**



YOU MAY DROP OFF:

- Prescription Medications
- Prescription Patches
- Over the Counter Medications
- Vitamins
- Sample Medications
- Medications for Pets

THE FOLLOWING ARE NOT ACCEPTED:

- Needles (Sharps)
- Liquid Medications
- Aerosol Containers
- Inhalers
- Ointments and Lotions
- Medications from Businesses





CopLogic

Online Crime Reporting Statistics



2013 COPLOGIC STATISTICS:

Total Online Reports:	1671
Hours Saved:	3342
Cost Savings:	\$125,325

2014 COPLOGIC STATISTICS:

Total Online Reports:	2355
Hours Saved:	4710
Cost Savings:	\$176,625

2015 COPLOGIC STATISTICS:

Total Online Reports:	2266
Hours Saved:	4532
Cost Savings:	\$169,950

Total Reports 2016



2016 Jan – Dec COPLOGIC STATISTICS:

Total Online Reports:	2170
Hours Saved:	4340
Cost Savings:	\$162,750

From January 2013 – December 2016, approximately 8,462 incidents have been reported using the online reporting system [CopLogic](#). This has resulted in nearly 16,924 deputy hours saved, at a cost savings of approximately **\$634.650 – MORE THAN HALF A MILLION TAXPAYER DOLLARS - thus far – in only four years!!!**





LCSO Website – sheriff.loudoun.gov



Website Offers Innovative & Interactive Features in a More User-Friendly Layout

- **Report a Crime Online**
 - ✓ Report Certain Crimes Like Larceny, ID Theft & Vandalism via the Internet.
- **Community Resource Directory**
 - ✓ Search Community Resources for Health & Human Services in Loudoun County.
- **Case Follow-Up**
 - ✓ Victim's can Follow-up & Inquire on Status of Case via the Website.
- **Find My Station**
 - ✓ A Searchable Map allowing Residents to find their nearest Station providing services such as Fingerprinting & Background Checks.
- **Traffic Incident Mapping Using Online Mapping Resources**



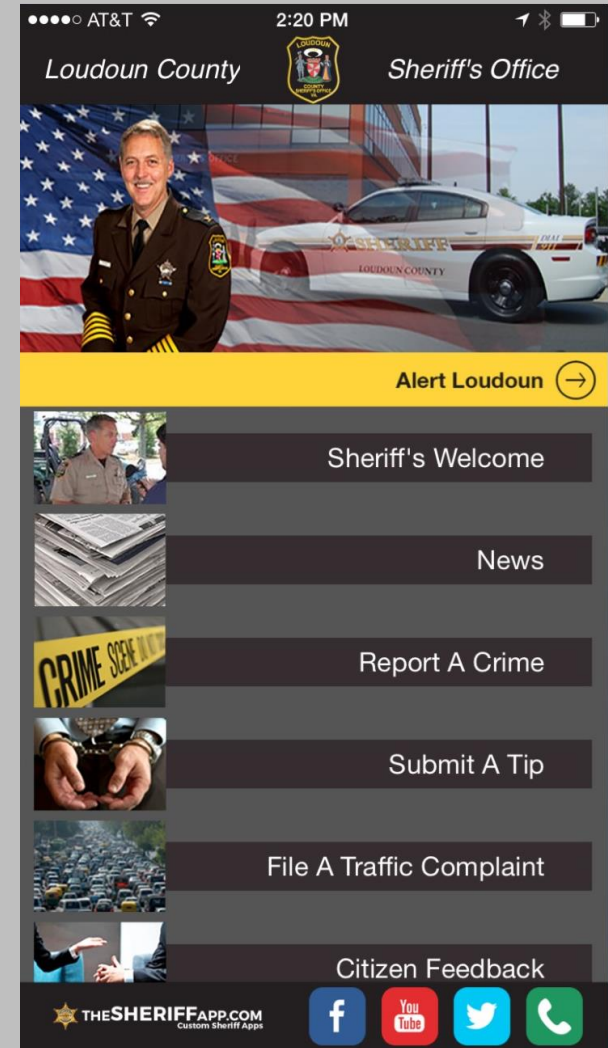


Loudoun County Sheriff's Office App



PUT CRIME INFORMATION AT YOUR FINGERTIPS

- Submit Crime Tips
- Report a Crime
- Make a Traffic Complaint
- Provide Citizen Feedback
- Learn the Latest Public Safety News
- Review Current Traffic Incidents Dispatched by the LCSO
- Receive Non-Emergency Community Notifications
- Learn of Upcoming Meetings & Events Held by the LCSO





CALL if You Can

TEXT 911

TEXT if You Can't



Beginning 03/01/2016, in all of Loudoun County and its incorporated towns.

If you are deaf, hard of hearing, or have a speech disability.

If you cannot speak due to injury or medical condition.



HOW TO TEXT TO 911:

- ☐ Enter only 911 in the "To" field.
- ☐ Text should be short and include:
 - Location
 - Type of Emergency
- ☐ Be prepared to answer questions and follow Call Taker's instructions.
- ☐ Photos and videos cannot be sent to 911.
- ☐ Texts to 911 cannot include more than 1 recipient.
- ☐ TEXT 911 is available for:
 - ❖ FIRE
 - ❖ MEDICAL
 - ❖ POLICE

If you are in a threatening situation.

If your mobile reception signal is poor.





Sheriff's Office Technology



Alert Loudoun 2.0

Information You Need Wherever You Are

Emergency Alerts, Traffic, Weather, County News

www.loudoun.gov/alert



- Follow Loudoun County Sheriff's Office on Facebook- www.facebook.com/loudounsheriff
- Follow LCSO on Twitter- www.twitter.com/loudounsheriff
- Follow us on Instagram- www.instagram.com/loudounsheriff
- Follow Loudoun County Traffic Incident Activity- www.sheriff.loudoun.gov/traffic
- Mobile Sheriff's Office App





Loudoun County Traffic Incident Activity

www.sheriff.loudoun.gov/traffic



GLOSSARY OF INCIDENT TYPES:

Major Accident: Crash involving possible serious injuries.

Property Damage Accident: Crash involving minor or no injuries.

Disabled Vehicle: A vehicle possibly impeding traffic flow.

Hit & Run Accident: A vehicle crash where a vehicle has left the scene.

Traffic Signal Malfunction: Traffic signals are either malfunctioning or off due to power failure.

Road Closure: Roadway is closed due to police activity or severe weather conditions.

Roadway Obstruction: An object in the roadway is interfering with traffic flow or motorist safety.


Loudoun County Traffic Incident Activity

Date	Time	Location	Type
Oct 29 2014	10:08:52	RED HILL RD-AB/EVERGREEN MILLS RD-AB	MAJOR ACCIDENT

Incidents: 1

[Switch to Mobile Device View](#) | [Clear the Map](#)

If you are unable to see the list of current incidents, please scroll to the top of the page.



REMINDER:

An intersection where the traffic signals are off due to power failure must be treated as a four-way stop!





LCSO ONLINE REPORTING

WWW.SHERIFF.LOUDOUN.GOV



ALERT LOUDOUN



FIND MY STATION



CRIME MAPS & STATS



Report a Crime Online FAQ's ▶

[Home](#) > Report A Crime

Loudoun Sheriff's Office Online Crime Reporting System

Report a Crime Online

Welcome to the Loudoun County Sheriff's Office Citizens Online Police Reporting System. **If this is an Emergency or a crime is in progress/just occurred, please call 911.** Using this online citizen crime reporting system allows you to submit a report without leaving your home; however, not every crime can be reported. Please confirm the following to find out if online citizen crime reporting is right for you:

- This is not an emergency?
- This incident occurred within Loudoun County?
- This is not a motor vehicle crash or hit and run?

If you answered yes to all of the above questions, you are ready to file your report online. Please make sure to turn off your pop-up blocking software before filing the report. If you answered no to any of the questions, please look at our [Online Crime Reporting Frequently Asked Questions](#) section. Upon completion of this report process you will:

- See the words: "Your online police report has been submitted" showing that your report is complete.
- Be given a temporary report number.
- Be able to print a copy of the temporary report to keep for your records.

Please Note:

- All cases filed using the Citizen's Online Crime Reporting System will be reviewed.
- Upon review, if further investigation of your case is needed, you may be contacted.
- **Filing a false police report is a CRIME.**

Anyone found to have submitted a false police report will be prosecuted under the authority of Virginia State Code §18.2-461, which shall be punishable as a Class 1 misdemeanor. Maximum possible penalty is one year in jail and/or \$2,500 fine. The Loudoun County Sheriff's Office Citizen's Online Crime Reporting System accepts the following types of incidents:

- | | | |
|--|--|---|
| <input type="checkbox"/> Alcohol Violations | <input type="checkbox"/> Civil Disputes | <input type="checkbox"/> Credit Card Fraud |
| <input type="checkbox"/> Destruction of Property | <input type="checkbox"/> Fraud/False Pretenses | <input type="checkbox"/> Harassing Calls/Emails |
| <input type="checkbox"/> Identity Theft | <input type="checkbox"/> Theft | <input type="checkbox"/> Theft From Vehicle |
| <input type="checkbox"/> Lost Property | <input type="checkbox"/> Narcotics Activity | <input type="checkbox"/> Suspicious Event/Circumstances |

[Please Click Here to Start Your Online Report](#)

[Please click here for Traffic Complaints](#)

[Please click here for Agency Questions or Concerns](#)

Incident Type	Definition	Examples
Alcohol Violation	When alcohol is consumed by a person under the age of 21, sold to a person under the age of 21 or purchased for a person under the age of 21.	Underage parties where persons less than 21 are consuming alcohol, locations where it is believed persons less than 21 are being sold alcohol or where persons are suspected of purchasing alcohol for those less than 21 years of age.
Civil Dispute	A disagreement between people or groups in which no criminal laws are broken.	Child custody disputes, neighbor disputes, common property disputes, etc.
Credit Card Fraud	Occurs when the credit card or credit card number(s) are used fraudulently without the consent of the cardholder.	Your wallet is lost or stolen and purchases are made on your credit card without your consent. An unauthorized purchase appears on your credit card statement from an online retailer.
Credit Card Theft	Taking or obtaining of credit card(s), or credit card number(s), with the intent to use them fraudulently.	Your credit card is stolen from your person or your credit card number is stolen by an unknown person.
Destruction of Property/Vandalism	The act of changing, modifying defacing public or private property.	A vehicle was damaged on the exterior, but no parts were removed or entry was made into the vehicle.
Fraud/False Pretense	Fraudulently obtaining or selling goods and services.	Construction work intentionally undone. False internet products or returns. Non-delivery of tickets.
Harassing Phone Calls/Emails	Unwanted phone calls or e-mail of an annoying, harassing nature.	Immediate phone hang-ups, obscene language, etc. with no known suspects.
Identity Theft	Obtaining another's personal identifying information and using it to obtain credit, goods or services.	Someone obtains a credit card using your Social Security Number or obtains phone service using your personal information.
Larceny/Theft	Your property is taken without your permission.	Someone takes your cellular phone without permission. Lost property is not a theft.
Lost Property	Property is missing or lost.	This is not theft of property. Does not include lost passports, social security cards or driver's licenses.
Narcotics Activity	Suspected narcotics activity.	Includes suspected sales of narcotics, traffic indicating the sale of narcotics, consumption of illegal narcotics.
Shoplifting	Property is taken from a business without paying.	Someone steals consumable product from a business and leaves without paying. This includes concealment.
Suspicious Event/Circumstance	Suspicious activity that you wish for the Sheriff's Office to know about, but is not necessarily a crime.	Someone you do not know hangs out on your street corner for several hours every afternoon. Cars that you do not recognize are parked in front of your home and then leave at all hours of the night. Your neighbor has frequent visitors that only stay for a couple of minutes at a time.





Residential Traffic Calming Program

What is traffic calming?

Traffic calming is the slowing of motorists on residential streets using physical and non-physical measures without restricting access. Because addressing speeding on one street will likely push the problem to adjacent streets, traffic calming is a community initiative, and will likely include several or more streets within a community.

A street must satisfy basic requirements to be eligible for the program:

- ☐ Publicly owned and maintained
- ☐ Classified as a local residential roadway
- ☐ 2-lane roadway
- ☐ 25 mph posted speed limit (or less)

What is the traffic calming process?

- ☐ Traffic Study
- ☐ Stakeholders Meeting
- ☐ Petition Process
- ☐ Traffic Calming Plan

Typical Physical Measures

Speed Humps, Raised Crosswalks, Choker, Mini Roundabout, Chicane, Raised Median Island

For more information, please contact DTCL at 703-737-8624, or take a brochure.





Traffic Projects

The Ashburn area has experienced the completion of several important road improvement projects.

- **Traffic signal installation at Gloucester Pkwy. and Smith Switch Rd. is now completed and operational**
- **Russell Branch Parkway/ Pacific Blvd extension now open**





Station Detectives



Sgt. John Davis

571-258-3363

john.davis@loudoun.gov

Det. Michael Hall

571-258-3043

michael.hall@loudoun.gov

Det. Megan Wealand

571-258-3257

megan.wealand@loudoun.gov

Det. Nicholas Campbell

703-737-8707

nicholas.campbell@loudoun.gov





Station Detectives



ARRESTED:
Antoine Robinson

Since November 2016, University Station residents, along with residents throughout the county, have been victims of burglaries due to vehicles having been entered and garage door openers being obtained. Suspects are then able to gain entry through the garage and into the home, where wallets, jewelry, and other items are targeted.

In some cases, the suspects have taken car keys and pushed vehicles out of the garage, stealing the car in order to target other victims.

In January 2017, two homes in the Lansdowne area were targeted in this manner. Detectives were able to obtain video of the suspect driving a stolen vehicle used in the burglaries. The suspect, identified as Antoine Eugene Robinson, Jr. of Sterling, was charged in the incidents. Mr. Robinson is suspected in several other similar incidents throughout the county.





Auto Tampering

The Sheriff's office continues to receive reports of larceny from vehicles. In many cases the vehicles were left unlocked. In some instances, entry is made into garages and homes by accessing the garage door openers which people regularly leave in their vehicles.



**PLEASE LOCK YOUR VEHICLES WHEN
PARKED AND NOT IN USE.**





IRS Scam



AS TAX SEASON APPROACHES, THE LOUDOUN COUNTY SHERIFF'S OFFICE IS WARNING RESIDENTS:

- Scammers pose as IRS officials, requiring immediate payment via prepaid money cards or wire transfers.
- These scams come mostly via telephone calls and emails.
- Individuals are notified that they “*owe the IRS money, and must pay it now, or risk being arrested*”.
- The scammers use spoofing apps which allow them to use any telephone number to make it look like the call originates from a legitimate source. They also may use VoIP phone services which are very difficult to trace, as they are often routed internationally through servers located abroad.
- **DO NOT provide payment via prepaid money card or wire transfer. The IRS will not demand a tax debt be paid in this manner.**
- **DO NOT provide or confirm personal information to anyone who is making such demands or threats.**



IF YOU HAVE A LEGITIMATE TAX ISSUE, THE IRS WILL CONTACT YOU VIA MAIL





CRISIS INTERVENTION



**Loudoun County's first Crisis Intervention Team [CIT]
Assessment Center opened October 1st
Shenandoah Building in Leesburg
102 Heritage Way, N.E.
Open Daily 7 a.m. to 11:00 p.m.**

- ☐ Funded through a grant by the VA Dept. of Behavioral & Developmental Services
- ☐ An ongoing collaboration initiated four years ago between Loudoun County Mental Health, Substance Abuse & Development Services, LCSO, and other local PDs and mental health agencies
- ☐ CIT training helps prepare law enforcement personnel to calmly and effectively communicate with citizens experiencing a behavioral crisis
- ☐ The assessment center will increase access to evaluations during the time of crisis and will minimize the time law enforcement is pulled away from other duties
- ☐ 60% of LCSO sworn personnel have been CIT trained, with a goal of 100%
- ☐ 95% of ECC call takers and dispatchers have been CIT trained





Citizen's Police Academy

A community outreach initiative designed to inform citizens and community leaders about the operations of the Loudoun County Sheriff's Office.

TOPICS DISCUSSED:

Administrative & Technical Support Division:

Emergency Communications Center (ECC)

Emergency Operations Center (EOC)

Loudoun Co. Sheriff's Office Records Section / Employment Services Unit

Loudoun Co. Sheriff's Office Training Section

Field Operations Division:

Field Operations / Patrol

Field Operations / Community Policing

Operation Support Division:

OSD / School Resource Officers

OSD / Traffic Unit

OSD / SWAT Unit

OSD / Crime Prevention Section

OSD / K-9 Unit

OSD / Youth Services Section

Criminal Investigations Division:

CID / Robbery & Homicide Unit

CID / Financial Crimes Unit

CID / Crime Scene Unit

CID / Juvenile & Sex Crimes Unit

CID / Tactical Enforcement Unit

CID / Computer Forensics Unit

**** 39th Citizen's Police Academy
Enrollment will be Spring of 2017 ****





Help Fight Crime, Support Crime Solvers



The mission of Loudoun County Crime Solvers is to promote community participation by assisting local law enforcement agencies, through a partnership with the community and the media, to apprehend and convict criminals through a system of cash rewards.

Loudoun County Crime Solvers depends on private donations and your donation to the nonprofit organization is critical to support this mission.

Residents interested in supporting Loudoun Crime Solvers are asked to please send a check to:

**Loudoun County Crime Solvers
P.O. Box 3343
Leesburg, VA 20177**

Donations are tax-deductible. Thank you!





REMINDERS

Help us, help you!

SECURE VALUABLES IN YOUR HOME OR VEHICLE TRUNK

RECORD SERIAL OR IDENTIFICATION NUMBERS OF VALUABLES

LOCK YOUR VEHICLE DOORS - EVEN IN YOUR OWN DRIVEWAY
[Remove garage door opener from vehicle]

CLOSE/LOCK RESIDENTIAL GARAGES AND DOORS

ALWAYS BE AWARE OF YOUR SUROUNDINGS AND WATCH FOR
SUSPICIOUS PERSONS OR ACTIVITY

REPORT SUSPICIOUS ACTIVITY AND BE A GOOD WITNESS
PROVIDE CLOTHING DESCRIPTION, VEHICLE DESCRIPTION, DIRECTION OF TRAVEL
AND OTHER DETAILS OF WHAT YOU WITNESSED

AT DUSK, WALK OR RUN WITH ANOTHER PERSON AND/OR CARRY A CELL PHONE.





Loudoun County Sheriff's Office

**Thank you for your
continued support!**

