



Loudoun County Sheriff's Office University Station

Quarterly Community Meeting
February 8th, 2018
7-8pm



Meeting Agenda



- Welcome
- Major Chris Hines
- Captain Hibberd
 - ULS Organization Chart
 - UAS
- Sgt. Selby Station Operations
 - CR Unit Update
 - Property Crimes Update
- Captain Hibberd
 - Informational Items
- Contact Information





University Station Quarterly Meeting



Major Chris Hines Field Operations Division





Loudoun County Sheriff's Office Station Populations



Eastern Loudoun Station

Population: *81,899*

University Station

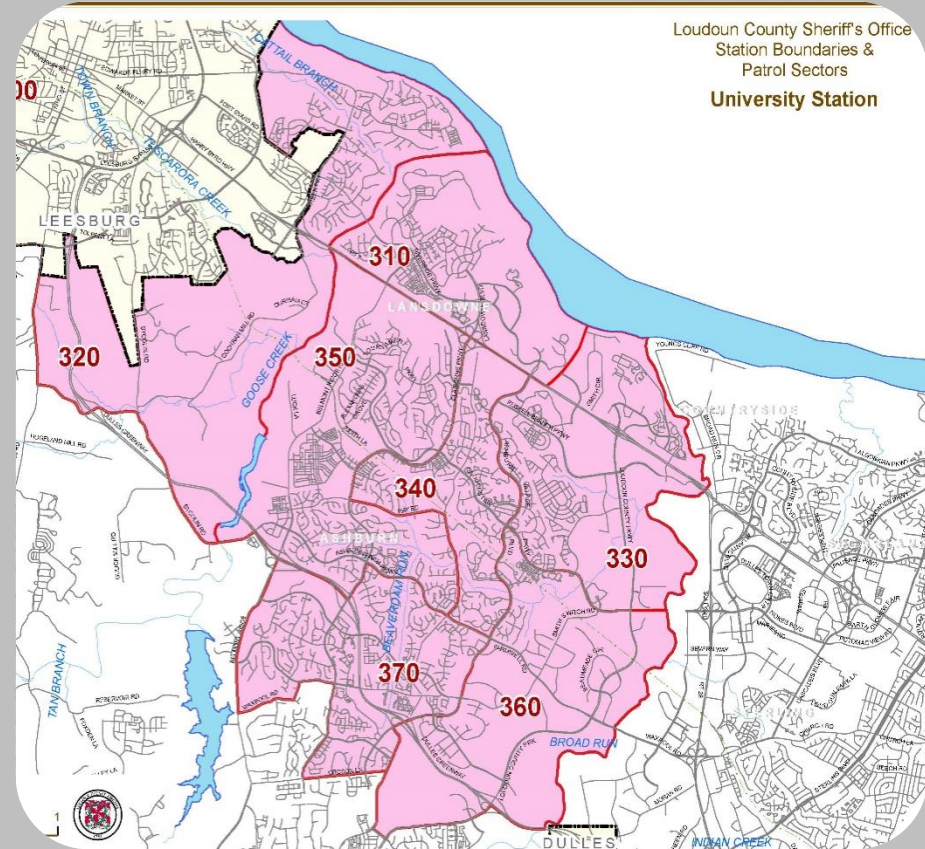
Population: *94,209*

Western Loudoun Station

Population: *52,430*

Dulles South Station

Population: *109,856*



** 2017 Loudoun County Department of Planning and Zoning **





Update on New Ashburn Station at One Loudoun



- ❖ The progress of the new Loudoun County Sheriff's Office Station continues but delays have pushed back the projected opening of the facility to late Spring.
- ❖ The new Ashburn Station will replace the current station which is a shared facility with the NVCJA
- ❖ There are currently no public services available at the University Station
- ❖ The Ashburn Station will provide substantial public safety services to the community and reduce travel time to LCSO headquarters, and the ADC
- ❖ The Ashburn Station is the fourth and final planned station for the Loudoun County Sheriff's Office

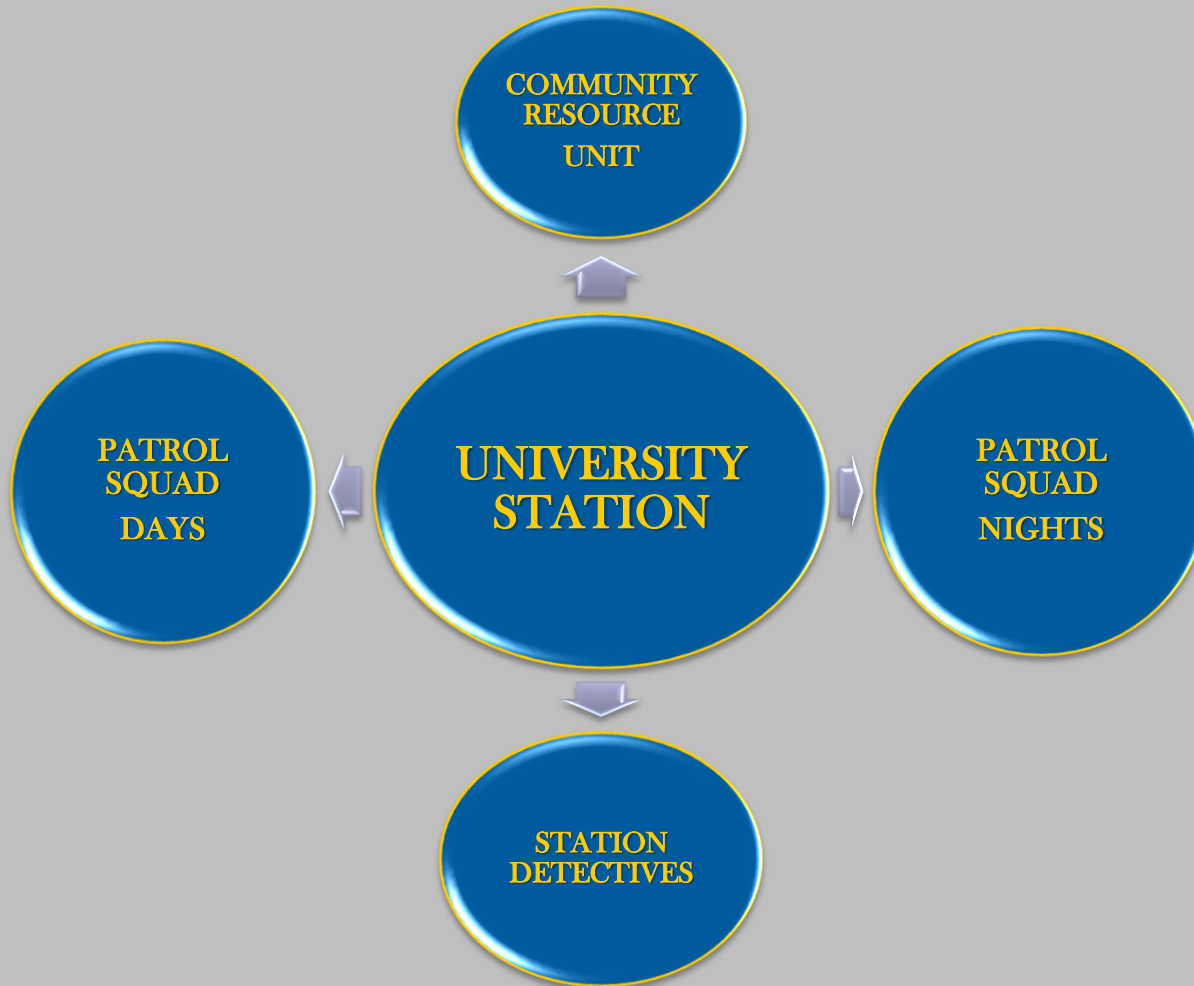


Rendering





University Station Sections





LCSO Project LifeSaver and Search/Rescue Drone



- ❖ The unmanned aircraft system is the first in Virginia and only the sixth in the United States
- ❖ Equipped with a Project Lifesaver Antennae. Currently 107 clients.
- ❖ Located 23 missing individual's over the past seven years, many rescued within 30 minutes



- ❖ The UAS is able to carry a payload of infrared and high resolution cameras to assist in search and rescue operations
- ❖ Members of LCSO Search and Rescue Team who operate the UAS's are licensed pilots through the FAA
- ❖ Per VA Code UAS's may only be deployed by LE without a warrant when operating for the purpose of Search and Rescue incidents, or related training.





100% of Patrol Trained in CIT (Crisis Intervention Training)



- ❖ The CIT training helps prepare law enforcement officers, on Patrol and in the Adult Detention Center, as well as emergency dispatchers to calmly and effectively communicate with citizens experiencing a behavioral crisis.
- ❖ December LCSO reached 100% of all uniformed Patrol deputies with two or more years trained
- ❖ 98 % of all dispatchers and call takers in the Emergency Communications Center are also trained in CIT
- ❖ Within the University Station area we handled 308 incidents involving citizens experiencing a behavioral crisis





Community Resource/Station Sergeant



Sergeant Dan Selby

Community Resource Deputies

Station Detectives

703-777-0488

Daniel.Selby@Loudoun.gov





ASHBURN VANDALISM SERIES



- ❖ An 18-year-old and three juveniles are charged in connection with a series of vandalism cases in the Ashburn.
- ❖ Spencer Lewis of Ashburn was charged with felony destruction of property, petit larceny, and three counts of contributing to the delinquency of a minor.
- ❖ The three juveniles, ranging in age from 15 to 16-years-old, were also charged with felony destruction of property, conspiracy to commit a felony and petit larceny. Their names cannot be released due to the fact they are juveniles.
- ❖ The investigation stemmed from 21 incidents where vehicle windows were damaged, a business door was damaged and a home window was damaged over a several day period in Mid-November. In the cases the damage was caused by discharged BB pellets or marbles utilizing a slingshot. Items were also taken from vehicles.
- ❖ The Loudoun County Fire Marshal is also investigating an incident where a stolen item from a vehicle was set on fire and left in a parking lot near Ashburn Road



Spencer Lewis





ATM LARCENIES & STOLEN VEHICLES



17-0018049/89

- Suspect smashed the front window of a business in the University area along with another business within Loudoun County in the middle of the night.
- Attached a tow strap from his truck to the ATM's and yanked the machines out of the businesses.
- Regional series. Subject and his wife have been arrested and will be charged federally.

17-0019451

- Vehicle theft from Ashburn on Bristow Circle. The vehicle was located by PWPD in a hotel parking lot.
- During the investigation they located a room rented by several subjects from the Ashburn area. After investigating, two were taken into custody.
- Both denied involvement when interviewed by LCSO Detective.
- BWC footage of original contact recorded a juvenile suspect openly admitting to stealing the vehicle from Ashburn.
- This group is suspected of stealing multiple vehicles in the Ashburn area along with fraud, and other larcenies.
- Many have been charged with a variety of crimes by LCSO and Leesburg PD





DON'T FIND YOURSELF ON THIN ICE



- ❖ Never Walk or Attempt to Drive on Frozen Waterways
- ❖ Many Communities Strictly Prohibit Ice Skating on Frozen Ponds
- ❖ Never Attempt to Enter Water if Someone Has Fallen Through the Ice- Call 911 & Extend a Branch or Rope.

Immediately Report Anyone Attempting to Venture on the Ice & Speak With Your Children About the Danger of Walking on and Playing on Frozen Waterways





ALERT LOUDOUN



Learn About Recent Incidents and Arrests in Loudoun County via the
Daily Incident Report



To receive the Daily Incident Report and other LCSO news, traffic alerts, press releases via text or email, please register for Alert Loudoun at sheriff.loudoun.gov/alertloudoun.

01/03/18	600 block	Auto Theft: A 1992 black Honda Civic
01/04/18	W. Jasper Ct.	was reported stolen from the area.
1851 hrs.	Sterling	SO180000186
0530 hrs.		





LCSO Medication Disposal Box



UNUSED OR EXPIRED MEDICATION

YOU MAY DROP OFF:

- ❖ Prescription Medications
- ❖ Prescription Patches
- ❖ Over the Counter Medications
- ❖ Vitamins
- ❖ Sample Medications
- ❖ Medications for Pets

THE FOLLOWING ARE NOT ACCEPTED:

- ❖ Needles (Sharps)
- ❖ Liquid Medications
- ❖ Aerosol Containers
- ❖ Inhalers
- ❖ Ointments and Lotions
- ❖ Medications from Businesses



Eastern Loudoun Sheriff's Station
46620 East Frederick Drive,
Sterling

Dulles South Public Safety Center
25216 Loudoun County Parkway,
South Riding

University Sheriff's Station
45299 Research Pl, Ashburn

Western Loudoun Station
47 W. Loudoun St, Roundhill

Monday – Friday
8:30am – 5:00pm





LCSO Website



Sheriff.Loudoun.Gov

Website Offers Innovative & Interactive Features in a More User Friendly Layout

- Report a Crime Online
 - ✓ Report Certain Crimes Like Larceny, ID Theft & Vandalism via the Internet.
- Community Resource Directory
 - ✓ Search Community Resources for Health & Human Services in Loudoun County.
- Case Follow-Up
 - ✓ Victim's can Follow-up & Inquire on Status of Case via the Website.
- Find My Station
 - ✓ A Searchable Map allowing Residents to find their nearest Station providing
 - ✓ Services such as Fingerprinting & Background Checks.



- Traffic Incident Mapping Using Online Mapping Resources



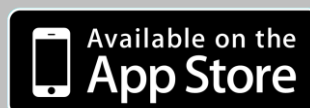


Loudoun County Sheriff's Office App



Put Crime Information at Your Fingertips

- ❖ Submit Crime Tips
- ❖ Report a Crime
- ❖ Make a Traffic Complaint
- ❖ Provide Citizen Feedback
- ❖ Learn the Latest Public Safety News
- ❖ Review Current Traffic Incidents Dispatched by the LCSO
- ❖ Receive Non-Emergency Community Notifications
- ❖ Learn of Upcoming Meetings & Events Held by the LCSO





CALL if You Can

TEXT 911

TEXT if You Can't



Available in all of Loudoun County and its incorporated towns.

If you are deaf, hard of hearing, or have a speech disability.

If you cannot speak due to injury or medical condition.



If you are in a threatening situation.

If your mobile reception signal is poor.

HOW TO TEXT TO 911:

- Enter only 911 in the “To” field.
- Text should be short and include:
 - Location
 - Type of Emergency
- Be prepared to answer questions and follow Call Taker’s instructions.
- Photos and videos cannot be sent to 911.
 - Texts to 911 cannot include more than 1 recipient.
 - TEXT 911 is available for:
 - FIRE
 - MEDICAL
 - POLICE





Sheriff's Office Technology



- Community Emergency Voice notifications
- Traffic alerts
- Weather alerts

www.loudoun.gov/alert

LCSO Traffic Incident Map

sheriff.loudoun.gov/traffic



- Search reported crimes in an area by address

www.crimereports.com



- Emergency alerts from your local governments in the National Capital Region

www.capitalert.gov

LCSO Social Media



Like us on Facebook



Follow us on Twitter



Follow us on Instagram



Subscribe to us on YouTube





my.VDOT.Virginia.gov

Virginia.gov Agencies Governor Search: Virginia.gov

VDOT Virginia Department of Transportation myVDOT Sign In or Register

Go to www.virginiadot.org

Need Location Details Contact

How can we help you?

- ☐ I need a road repaired
- ☐ I need something removed from a road
- ☐ I need signs, signals, or guardrail repaired
- ☐ I need new signs or traffic devices installed
- ☐ I have a question or need information
- ☐ I want to submit a claim (includes mailbox damage)

Note: VDOT does not maintain roads in cities, towns, or in Henrico and Arlington counties, except for interstates and major primary roads. Please submit a separate report for each request. If your request is related to a road hazard that needs immediate attention, please call 1-800-367-7623 (FOR-ROAD). For emergencies, please dial 911.

Continue >

Check service request status

What's your service request number?

Check your status

Traffic Information 511 offers real-time traffic info. Anytime you need it, anywhere you are.

Popular Links

- Business Center
- High Occupancy Vehicle (HOV) Systems
- Current Opportunities
- Consider a Career at VDOT
- Manuals, Guides and Instructional & Informational Memoranda
- Current Opportunities
- Design-Build Proposal Submittals and Rankings
- High Occupancy Vehicle (HOV) Lanes - Rules and FAQs

Northern Virginia District Office
14685 Avion Parkway
Chantilly, Virginia 20151
703-383-2000
www.VirginiaDOT.org

Work Requests

Just submit a [work request](#) or
call 800-367-ROAD (7623)

Questions? Comments? - Google Chrome

www.virginiadot.org/info/feedbackform.asp

Search this site

Traffic Information 511 offers real-time traffic info. Anytime you need it, anywhere you are.

SMART SCALE Dashboard Funding the right transportation projects.

Virginia Roads Your one-stop source for VDOT maps, data and project info.

Connect With Us! Visit Our Social Media Pages

Congratulate to VDOT's Tech Bruce Satterwhite, who won a Tech of the Year award from Q&AUP_CIRC maps in 2010/2011.

Questions? Comments? Use this form!

If you have questions or comments for the Virginia Department of Transportation, please use this form and someone will respond as soon as possible.

To report a road problem or request maintenance work, use the myVDOT Portal or call 800-FOR-ROAD (800-367-7623).

Name:

E-mail address:

Confirm e-mail address:

Email subject:

City or county:

Comments:

Before submitting this form, please type the characters displayed above:

Submit Comment | Reset Form

Required.





REMINDER



The Loudoun County Sheriff's Office **#9PMRoutine**

- *Lock personal vehicles*
- *Secure valuables in vehicle trunk*
- *Close/Lock residential garages and doors*
- *LCSO Non-Emergency Number (703)777-1021*
- *Safely secure all firearms* **** Not in Vehicles ****
- ***And.....Please share the #9PMRoutine information with your community to help prevent property crimes in your neighborhood !!***





Contact Information

Captain Dave Hibberd

Station Commander

703-771-5007

David.Hibberd@Loudoun.gov



1st Lt. Craig Schleiden

Assistant Station Commander

571-258-3747

Craig.Schleiden@Loudoun.gov

Sergeant Dan Selby

University Station Sergeant

703-777-0488

Daniel.Selby@Loudoun.gov

Non Emergency - 703-777-1021

Traffic Hotline - 703-771-5798

Narcotics Tip Line - 703-779-0552

Crime Solvers - 703-777-1919

Thank you for your continued support!

