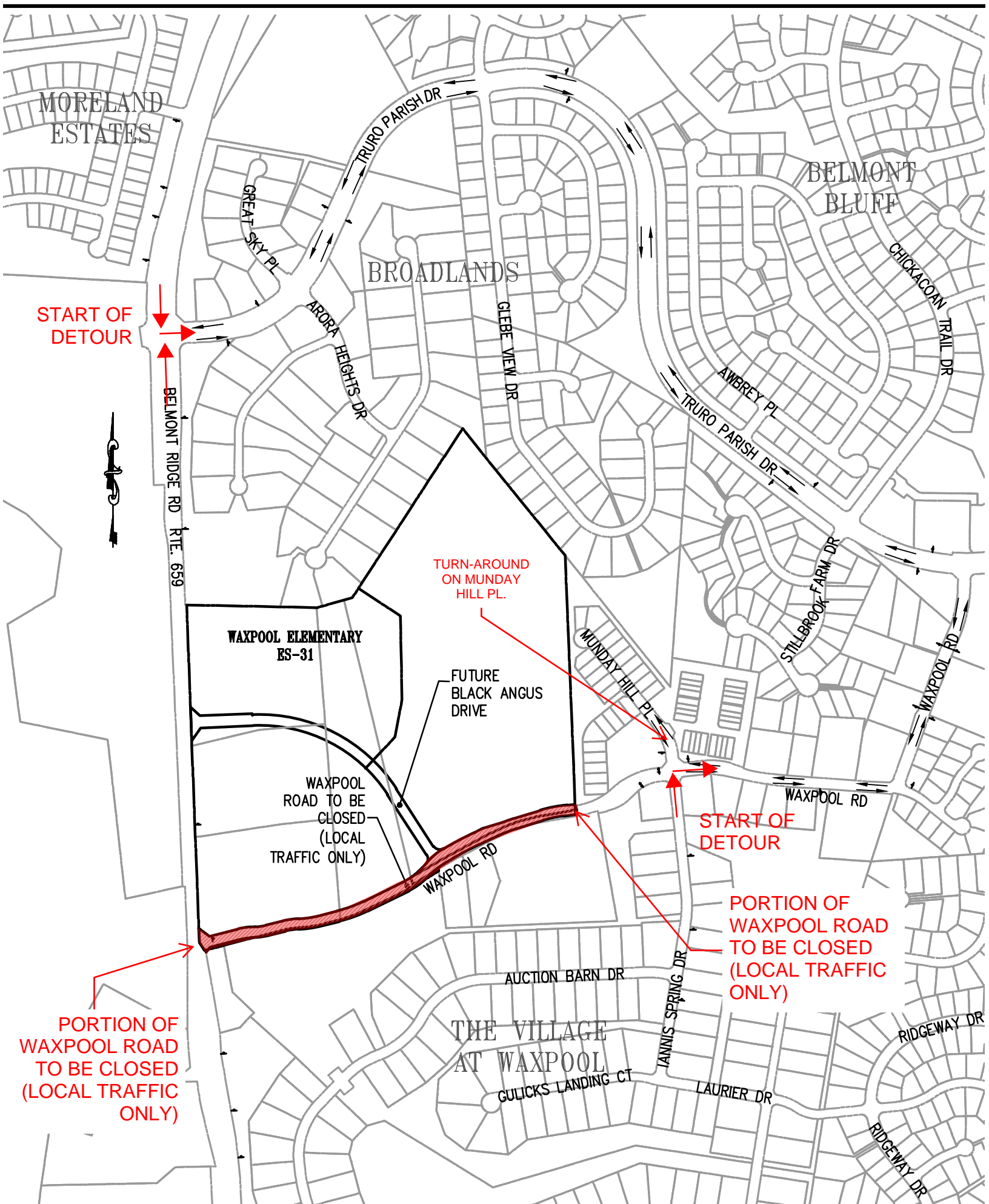


NEIGHBORS OF THE WAXPOOL ELEMENTARY SCHOOL PROJECT

Work on Waxpool Road (Route 900) between Belmont Ridge Road and Iannis Spring Drive/Munday Hill Place will begin on October 9, 2018

This segment of Waxpool Road will be closed to through traffic and only local traffic may use this segment of Waxpool Road. Local traffic is defined as those properties whose driveway is within the segment of the road under construction. The road closure will be from October 9, 2018 through approximately August 1, 2019. Sign Boards announcing the closure were placed and activated on the morning of September 26, 2018. The closure and detour ([please see exhibit on next page](#)) is for the construction of utilities and the reconstruction of Waxpool Road necessary for the operation of Waxpool Elementary School, opening for School Year 2019-2020.

Any questions concerning the closure can be directed to C. Travis Arey, Senior Project Manager, Howard Shockey & Sons, Inc, 540-667-7700.



MORELAND ESTATES

START OF DETOUR

BELMONT RIDGE RD RTE. 659

WAXPOOL ELEMENTARY ES-31

TURN-AROUND ON MUNDAY HILL PL.

FUTURE BLACK ANGUS DRIVE

WAXPOOL ROAD TO BE CLOSED (LOCAL TRAFFIC ONLY)

START OF DETOUR

PORTION OF WAXPOOL ROAD TO BE CLOSED (LOCAL TRAFFIC ONLY)

PORTION OF WAXPOOL ROAD TO BE CLOSED (LOCAL TRAFFIC ONLY)