



JOB SCHEDULE FOR THE BROADLANDS

PROJECT/JOB:

THE BROADLANDS CONCRETE & ASPHALT REPAIRS.

MONTH:

NOVEMBER / DECEMBER 2022

Notes:

“November dates” : are shaded Orange.

“December Dates”: are shaded Blue.

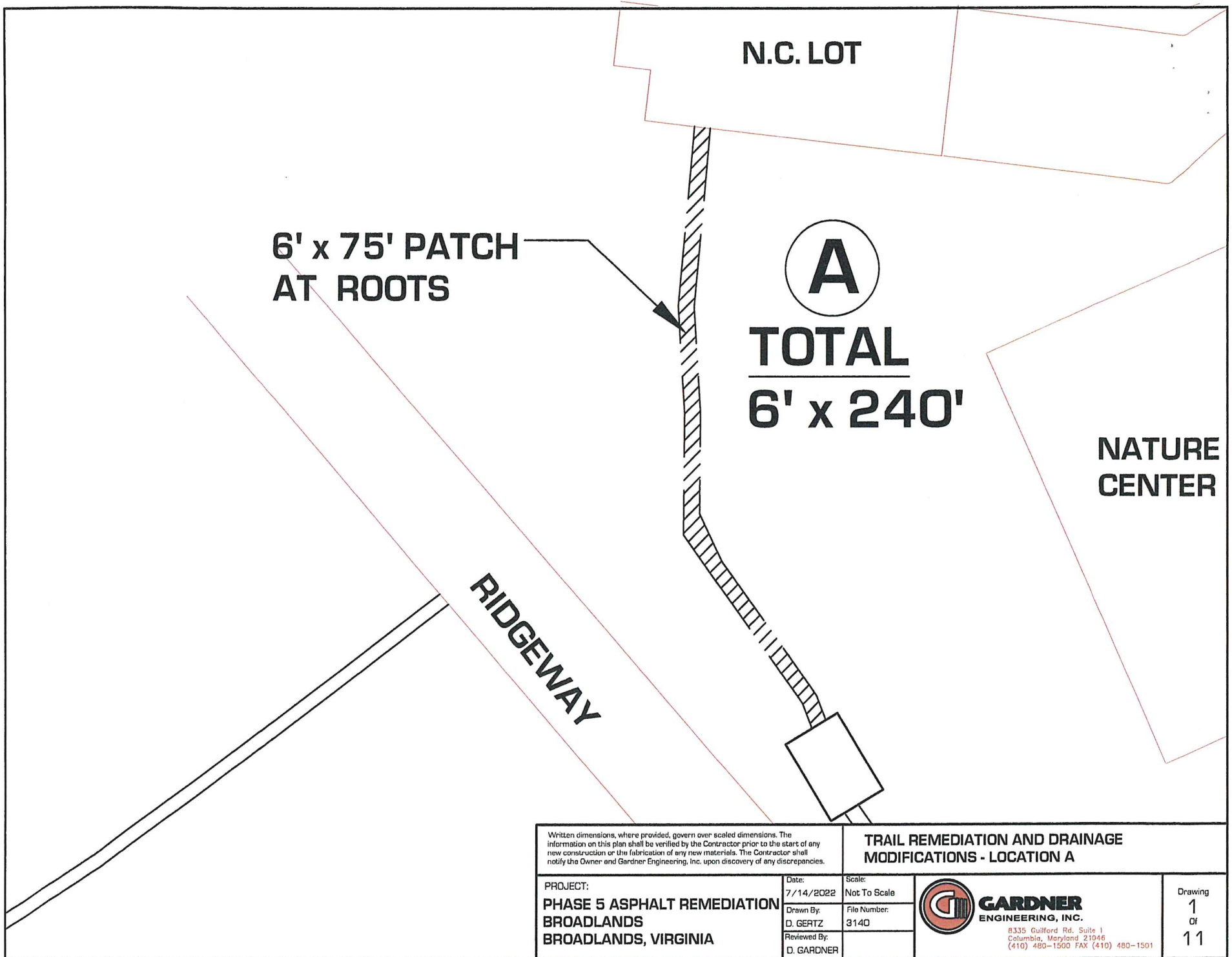
"A" Day: Off Streets from 7:00 AM until 5:00 PM or until barricades are removed by an FPC representative.*

“Concrete Day”: Park 20 feet away from all blue marks starting at 7:00 am until barricades are removed by an FPC representative.*

THIS SCHEDULE IS SUBJECT TO CHANGE

Events such as inclement weather or other unforeseen circumstances can change these dates. We will update the schedule accordingly if such events occur. Should we get ahead of schedule, we will notify the appropriate parties.

Sunday	Monday	Tuesday	Wednesday	Thursday	Friday	Saturday
		1	2	3 “Concrete Day” * Sidewalk Replacement	4 “Concrete Day” * Sidewalk Replacement	5
6	7 "A" Day	8 "A" Day	9 "A" Day	10 "A" Day	11	12
	* Trail Replacement: Area I & J.	* Trail Replacement: Area K. * Asphalt Patch on Neander Crossing Bridge. * Asphalt Patch on Waxpool.	* Trail Replacement: Area K. (Continued) * Trail Replacement: Area G.	* Trail Replacement: Area L.		
13	14 "A" Day	15 "A" Day	16 "A" Day	17 "A" Day	18 "A" Day	19
	* Trail Replacement: Area A.	* Trail Replacement: Area D.	* Trail Replacement: Area D. (Continued)	* Trail Replacement: Area H.	* Trail Replacement: Area H. (Continued)	
20	21 "A" Day	22 "A" Day	23 "A" Day	24	25	26
	* Trail Replacement: Area B & C.	* Trail Replacement: Area B & C. (Continued) * Trail Replacement: Area E & F.	* Trail Replacement: Area E & F. (Continued)	* Thanksgiving*		
27	28	29	30	1	2	3



COMPLETED

(C) TOTAL
4' x 185'
WIDEN TO 6' x 185'

ARBOR GREEN

RE-GRADE, ADD
24" CATCH BASIN,
80' UNDERDRAIN,
40' OF 6" PIPE AND
EW-12

GOLDEN
AUTUMN

21498

21502

(C)

TRAIL TO REMAIN
/ NO REPAIRS

ADD 50'
UNDERDRAIN
AND 40' OF 6"
PIPE WITH
EW-12

UNDERDRAIN
40' APART

ADD 75'
UNDERDRAIN,
30' OF 6"
PIPE AND
EW-12

(B)
TOTAL
6' x 650'

(B)

ELLZEY DR

Written dimensions, where provided, govern over scaled dimensions. The information on this plan shall be verified by the Contractor prior to the start of any new construction or the fabrication of any new materials. The Contractor shall notify the Owner and Gardner Engineering, Inc. upon discovery of any discrepancies.

PROJECT:
**PHASE 5 ASPHALT REMEDIATION
BROADLANDS
BROADLANDS, VIRGINIA**

Date:
6/24/2022
Drawn By:
D. GERTZ
Reviewed By:
D. GARDNER

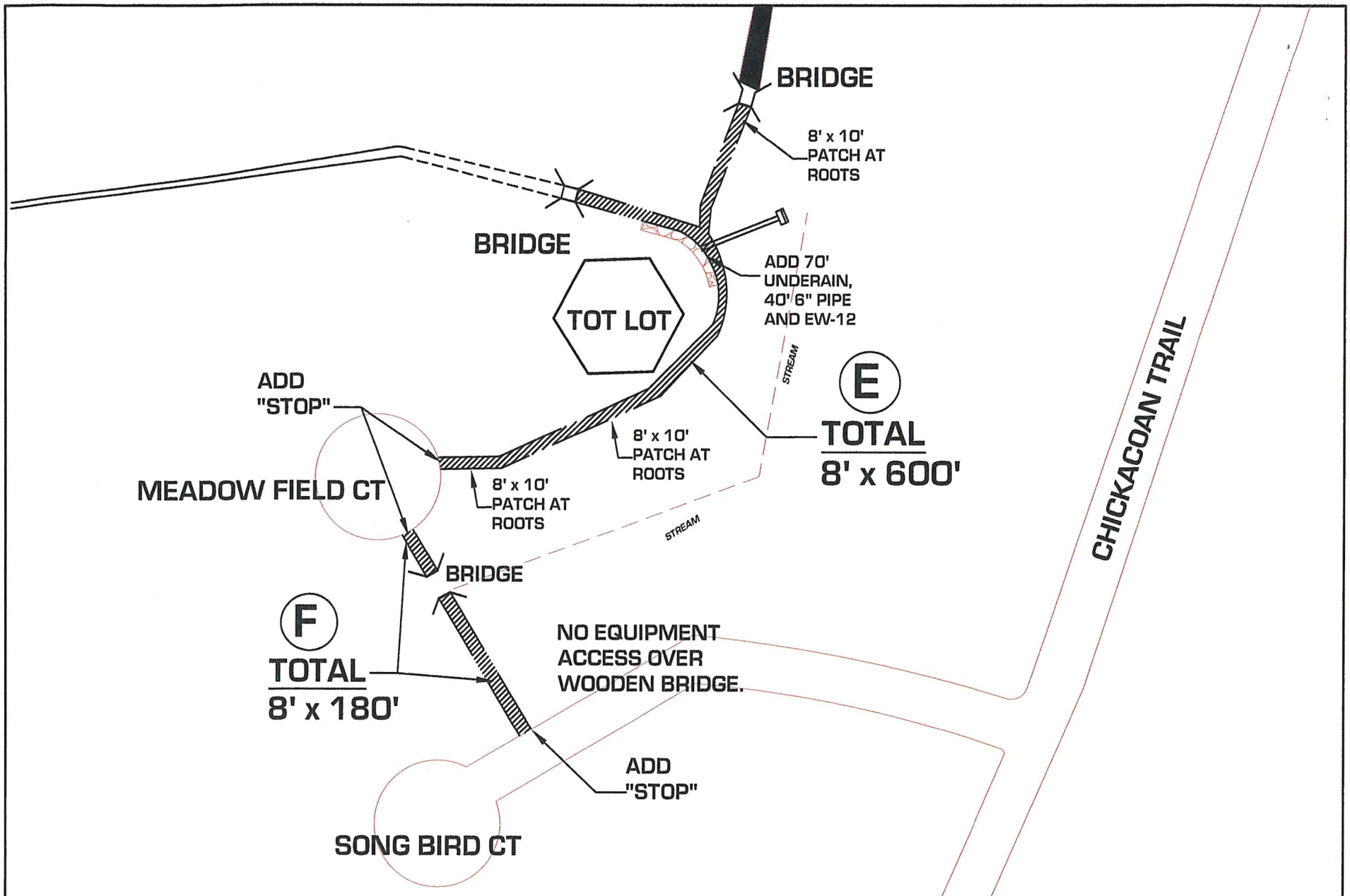
**TRAIL REMEDIATION AND DRAINAGE
MODIFICATIONS - LOCATIONS B AND C**



**GARDNER
ENGINEERING, INC.**

8335 Guilford Rd, Suite 1
Columbia, Maryland 21046
(410) 480-1500 FAX (410) 480-1501

Drawing
2
of
11



Written dimensions, where provided, govern over scaled dimensions. The information on this plan shall be verified by the Contractor prior to the start of any new construction or the fabrication of any new materials. The Contractor shall notify the Owner and Gardner Engineering, Inc. upon discovery of any discrepancies.

PROJECT:
**PHASE 5 ASPHALT REMEDIATION
 BROADLANDS
 BROADLANDS, VIRGINIA**

Date:
 7/14/2022
 Drawn By:
 D. GERTZ
 Reviewed By:
 D. GARDNER

Scale:
 Not To Scale

File Number:
 3140



**GARDNER
 ENGINEERING, INC.**

8335 Guilford Rd., Suite 1
 Columbia, Maryland 21046
 (410) 480-1500 FAX (410) 480-1501

**TRAIL REMEDIATION AND DRAINAGE
 MODIFICATIONS - LOCATIONS E AND F**

Drawing
 4
 of
 11

TRURO
PARISH

COMPLETED

G
TOTAL
6' x 360'

WHITE POST



Written dimensions, where provided, govern over scaled dimensions. The information on this plan shall be verified by the Contractor prior to the start of any new construction or the fabrication of any new materials. The Contractor shall notify the Owner and Gardner Engineering, Inc. upon discovery of any discrepancies.

**TRAIL REMEDIATION AND DRAINAGE
MODIFICATIONS - LOCATION G**

PROJECT:
**PHASE 5 ASPHALT REMEDIATION
BROADLANDS
BROADLANDS, VIRGINIA**

Date:
7/14/2022
Drawn By:
D. GERTZ
Reviewed By:
D. GARDNER

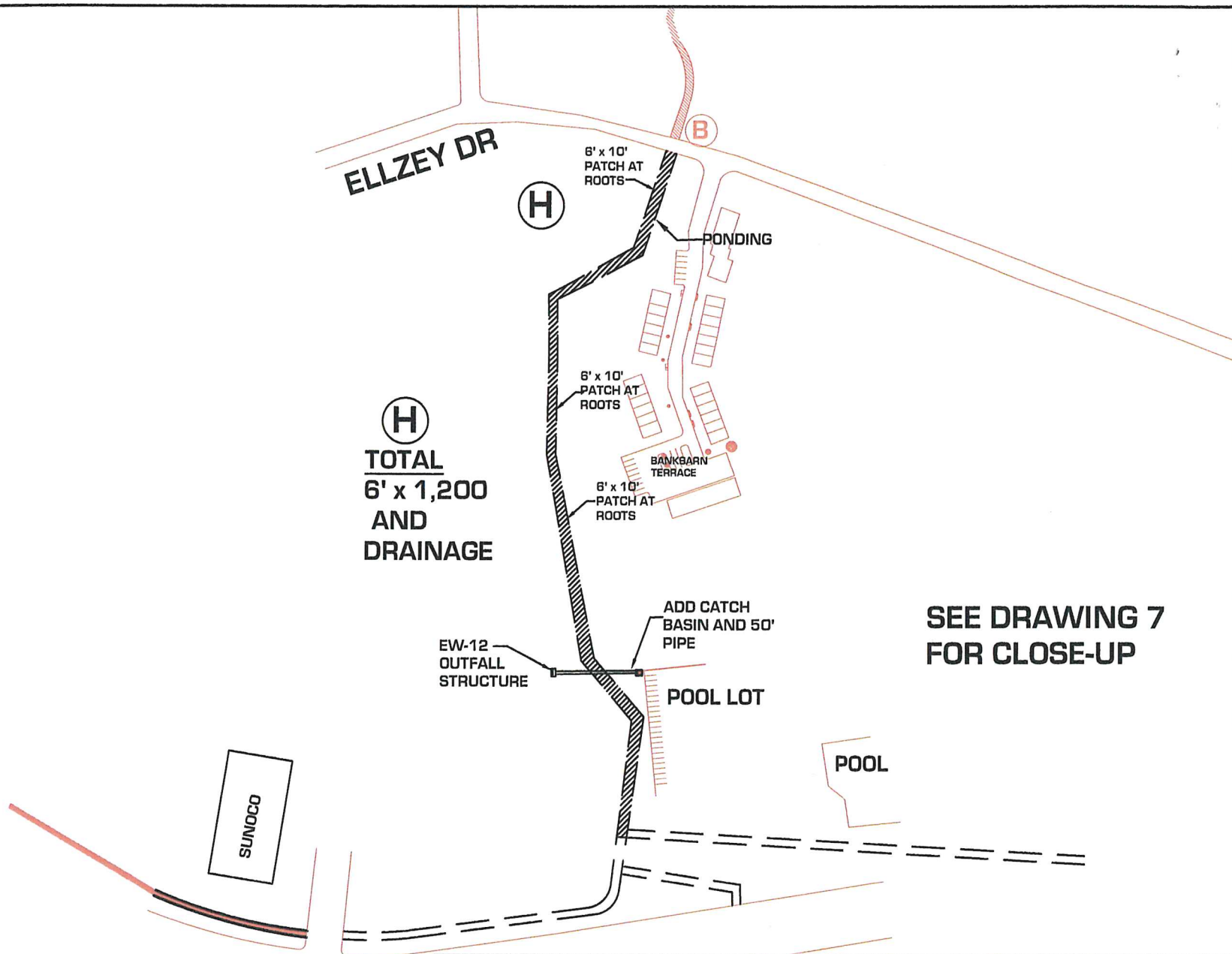
Scale:
Not To Scale
File Number:
3140



**GARDNER
ENGINEERING, INC.**

8335 Guilford Rd. Suite 1
Columbia, Maryland 21046
(410) 480-1500 FAX (410) 480-1501

Drawing
5
Of
11



Written dimensions, where provided, govern over scaled dimensions. The information on this plan shall be verified by the Contractor prior to the start of any new construction or the fabrication of any new materials. The Contractor shall notify the Owner and Gardner Engineering, Inc. upon discovery of any discrepancies.

TRAIL REMEDIATION AND DRAINAGE MODIFICATIONS - LOCATION H

PROJECT:
**PHASE 5 ASPHALT REMEDIATION
BROADLANDS
BROADLANDS, VIRGINIA**

Date:
7/14/2022
Drawn By:
D. GERTZ
Reviewed By:
D. GARDNER

Scale:
Not To Scale
File Number:
3140



**GARDNER
ENGINEERING, INC.**

8335 Guilford Rd. Suite 1
Columbia, Maryland 21046
(410) 480-1500 FAX (410) 480-1501

Drawing
6
of
11

**INSTALL 24" x
24" CATCH BASIN
WITH 6" HIGH
CURB ON TWO
SIDES. EXTEND
EXISTING CURB**

**EW-12 OUTFALL
STRUCTURE IN WOODED
AREA, APPROXIMATELY
25 FEET PAST TRAIL**

**60 LF OF 6" PIPE.
UNDER TRAIL
INCLUDE
PATCHING OF
TRAIL**

**ADD SLOPED
CONCRETE
APRON INTO NEW
CATCH BASIN**

**POOL
LOT**



Written dimensions, where provided, govern over scaled dimensions. The information on this plan shall be verified by the Contractor prior to the start of any new construction or the fabrication of any new materials. The Contractor shall notify the Owner and Gardner Engineering, Inc. upon discovery of any discrepancies.

**TRAIL REMEDIATION AND DRAINAGE
MODIFICATIONS - LOCATION H - CLOSE UP**

PROJECT:
**PHASE 5 ASPHALT REMEDIATION
BROADLANDS
BROADLANDS, VIRGINIA**

Date:
7/14/2022
Drawn By:
D. GERTZ
Reviewed By:
D. GARDNER

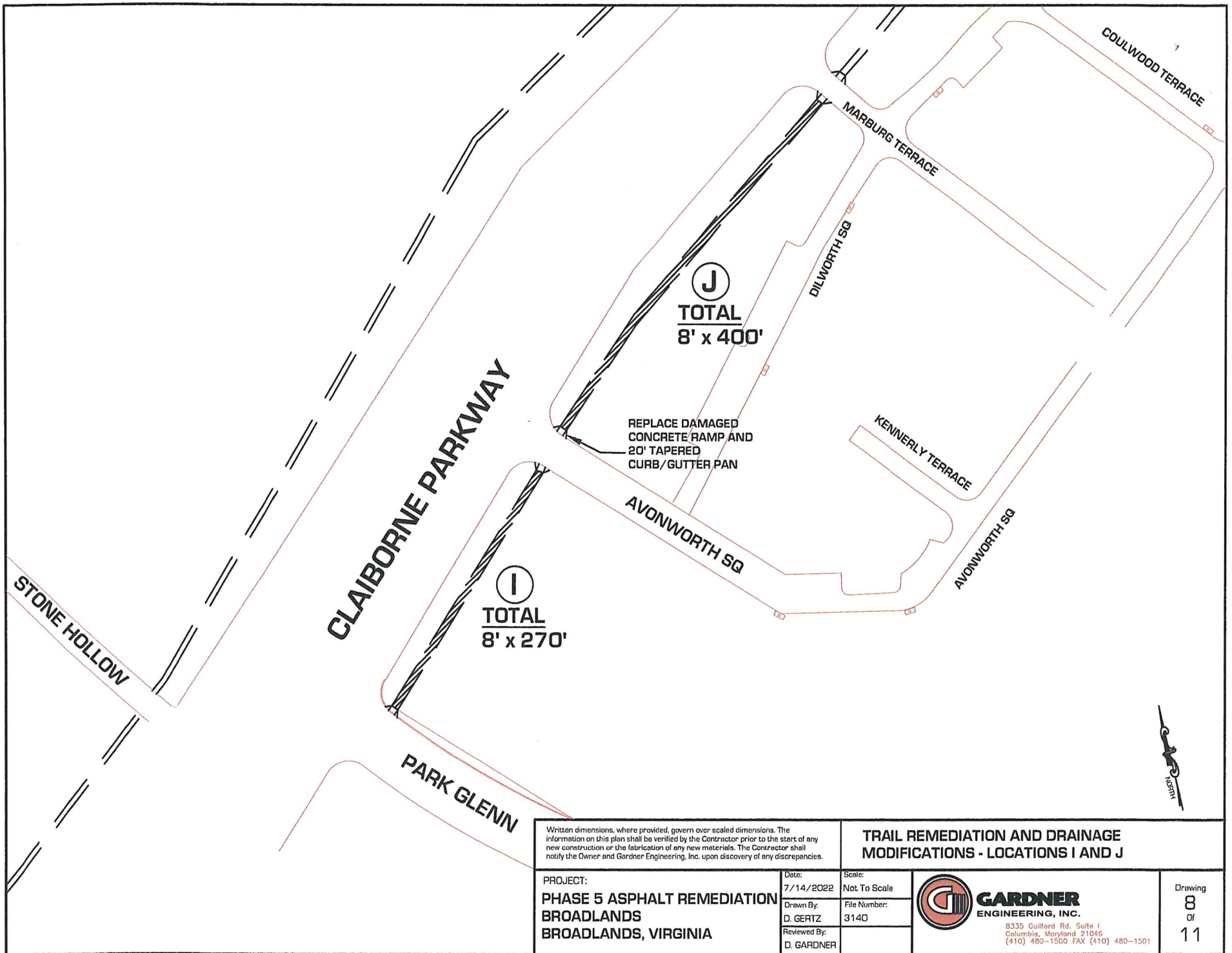
Scale:
Not To Scale
File Number:
3140



**GARDNER
ENGINEERING, INC.**

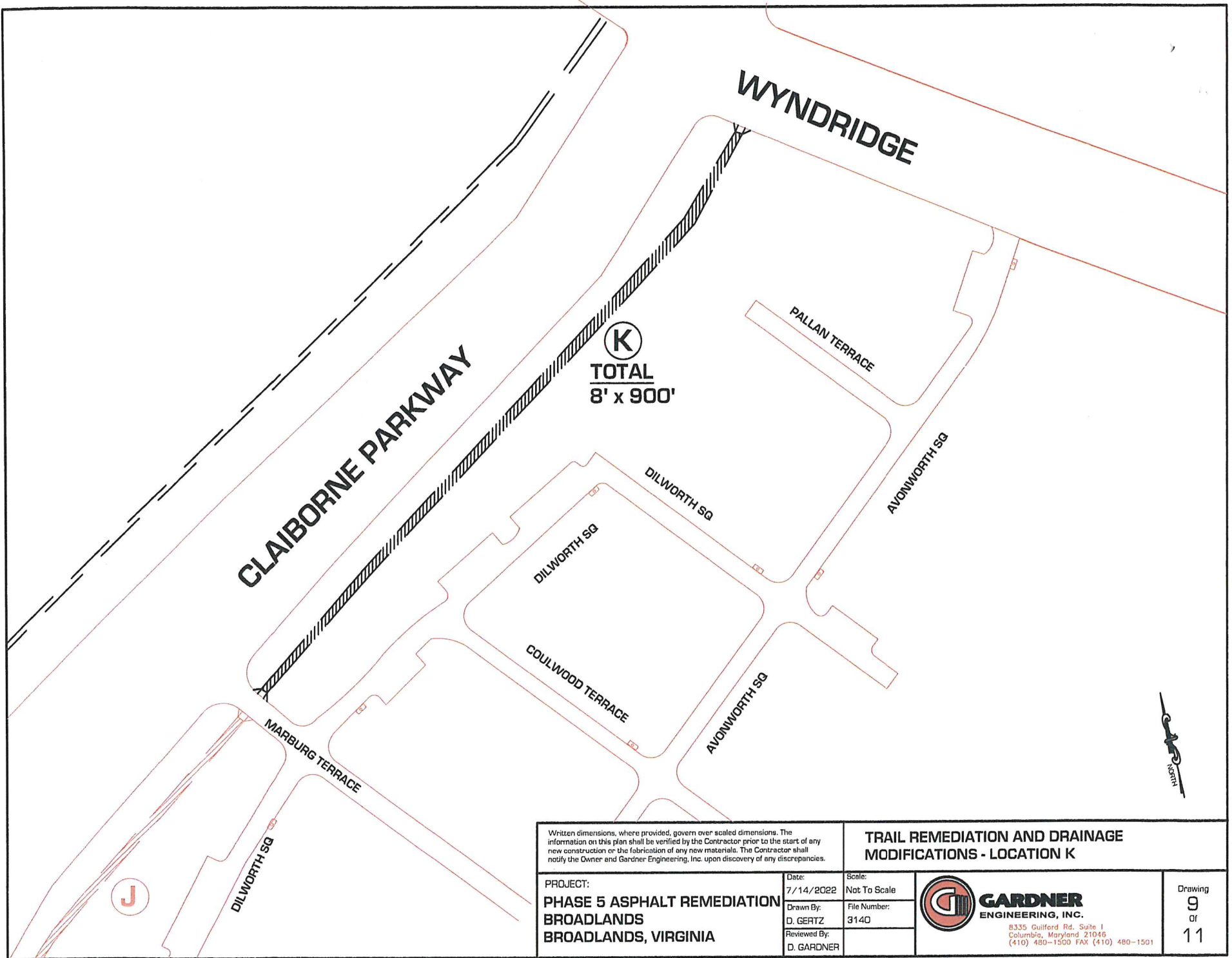
8335 Guilford Rd. Suite 1
Columbia, Maryland 21046
(410) 480-1500 FAX (410) 480-1501

Drawing
7
of
11



Written dimensions, where provided, govern over scaled dimensions. The information on this plan shall be verified by the Contractor prior to the start of any new construction or the fabrication of any new materials. The Contractor shall notify the Owner and Gardner Engineering, Inc. upon discovery of any discrepancies.

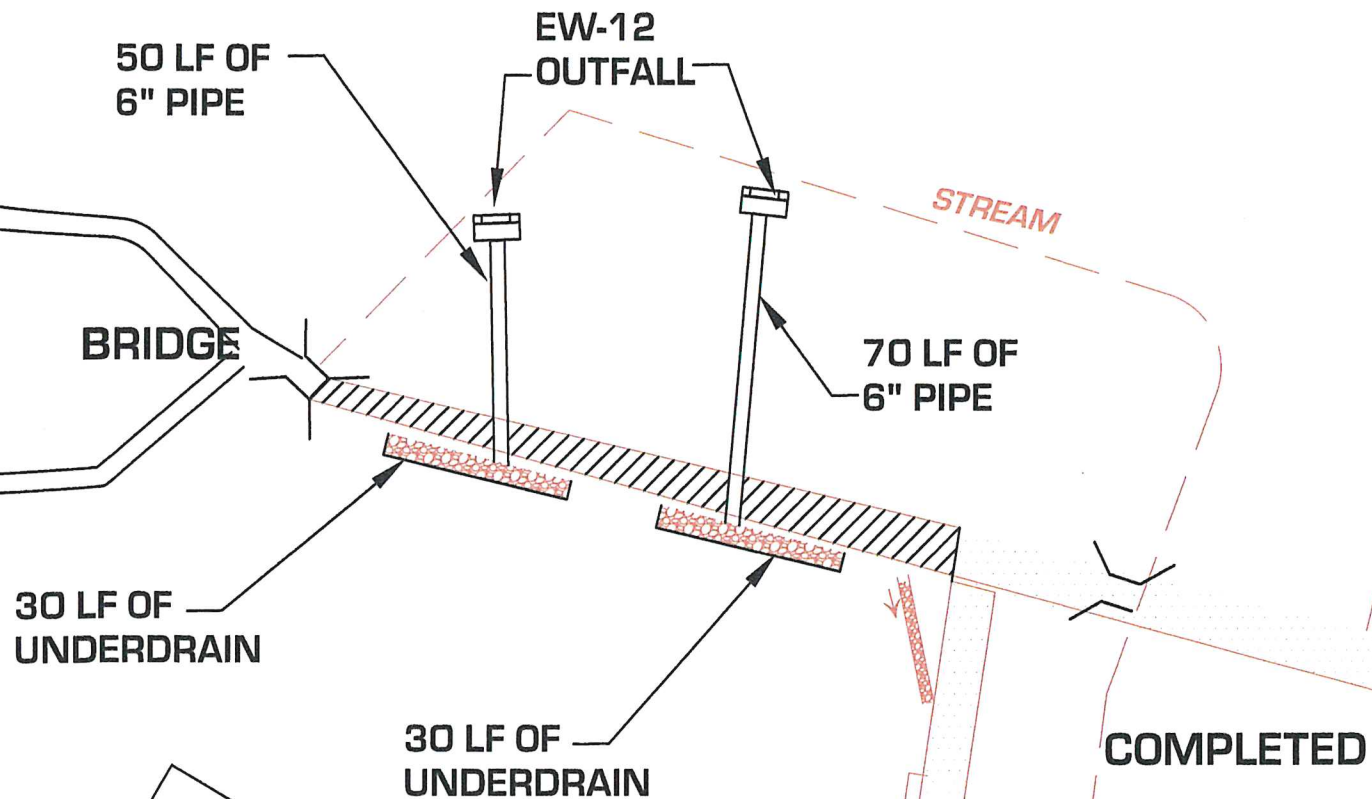
PROJECT: PHASE 5 ASPHALT REMEDIATION BROADLANDS BROADLANDS, VIRGINIA		Date: 7/14/2022	Scale: Not To Scale	 GARDNER ENGINEERING, INC. 8335 Guilford Rd, Suite 1 Columbia, Maryland 21046 (410) 480-1500 FAX (410) 480-1501	Drawing 8 of 11
Drawn By: D. GERTZ		File Number: 3140			
Reviewed By: D. GARDNER					



<small>Written dimensions, where provided, govern over scaled dimensions. The information on this plan shall be verified by the Contractor prior to the start of any new construction or the fabrication of any new materials. The Contractor shall notify the Owner and Gardner Engineering, Inc. upon discovery of any discrepancies.</small>		
PROJECT: PHASE 5 ASPHALT REMEDIATION BROADLANDS BROADLANDS, VIRGINIA	Date:	7/14/2022
	Drawn By:	D. GERTZ
	Reviewed By:	D. GARDNER
	Scale:	Not To Scale

TRAIL REMEDIATION AND DRAINAGE MODIFICATIONS - LOCATION K	
 GARDNER ENGINEERING, INC. <small>8335 Guilford Rd, Suite 1 Columbia, Maryland 21046 (410) 480-1500 FAX (410) 480-1501</small>	Drawing 9 of 11

L TOTAL
8' x 240'



Written dimensions, where provided, govern over scaled dimensions. The information on this plan shall be verified by the Contractor prior to the start of any new construction or the fabrication of any new materials. The Contractor shall notify the Owner and Gardner Engineering, Inc. upon discovery of any discrepancies.

PROJECT:
**PHASE 5 ASPHALT REMEDIATION
BROADLANDS
BROADLANDS, VIRGINIA**

Date:
7/14/2022
Drawn By:
D. GERTZ
Reviewed By:
D. GARDNER

Scale:
Not To Scale
File Number:
3140

**TRAIL REMEDIATION AND DRAINAGE
MODIFICATIONS - LOCATION L**

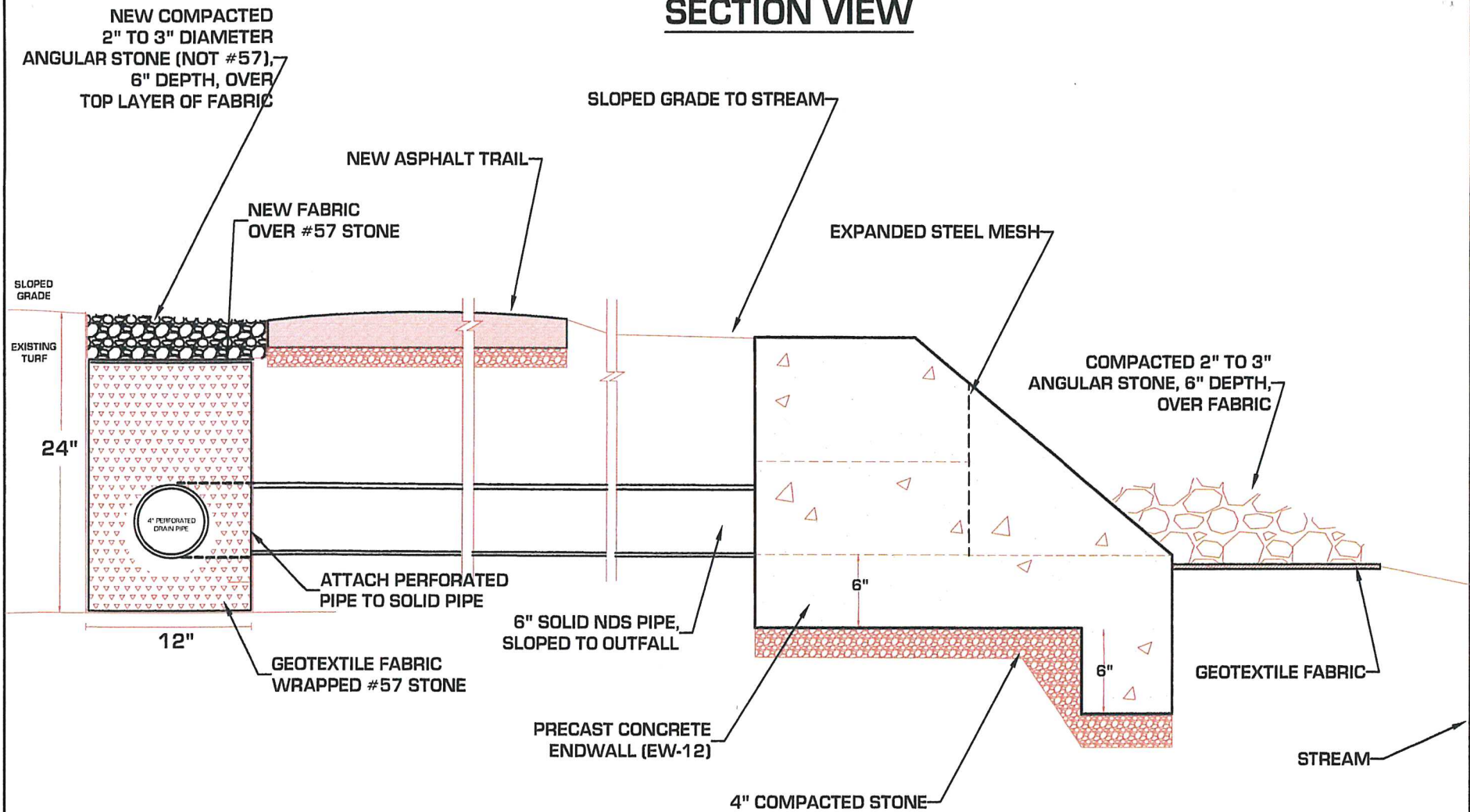


**GARDNER
ENGINEERING, INC.**

8335 Guilford Rd. Suite 1
Columbia, Maryland 21046
(410) 480-1500 FAX (410) 480-1501

Drawing
10
of
11

SECTION VIEW



Written dimensions, where provided, govern over scaled dimensions. The information on this plan shall be verified by the Contractor prior to the start of any new construction or the fabrication of any new materials. The Contractor shall notify the Owner and Gardner Engineering, Inc. upon discovery of any discrepancies.

TRAIL UNDERDRAIN AND OUTLET STRUCTURE

PROJECT:
PHASE 5 ASPHALT REMEDIATION
BROADLANDS
BROADLANDS, VIRGINIA

Date:
7/14/2022
Drawn By:
D. GERTZ
Reviewed By:
D. GARDNER

Scale:
Not To Scale
File Number:
3140



**GARDNER
ENGINEERING, INC.**

8335 Guilford Rd. Suite 1
Columbia, Maryland 21046
(410) 480-1500 FAX (410) 480-1501

Drawing
11
of
11