



**Loudoun County**

**VIRGINIA**

WHERE TRADITION MEETS INNOVATION

# Broad Run District Broadlands Presentation

Supervisor Glass  
Broad Run District  
Monday, August 21, 2023

# Role of a Supervisor

- 9 Supervisors
  - 8 Districts of equal population
  - 1 countywide At-Large
  - 4-year, concurrent terms
- Vote on legislative issues
- Appropriate money
- Set tax rate
- Approve development projects
- Represent Loudoun regionally

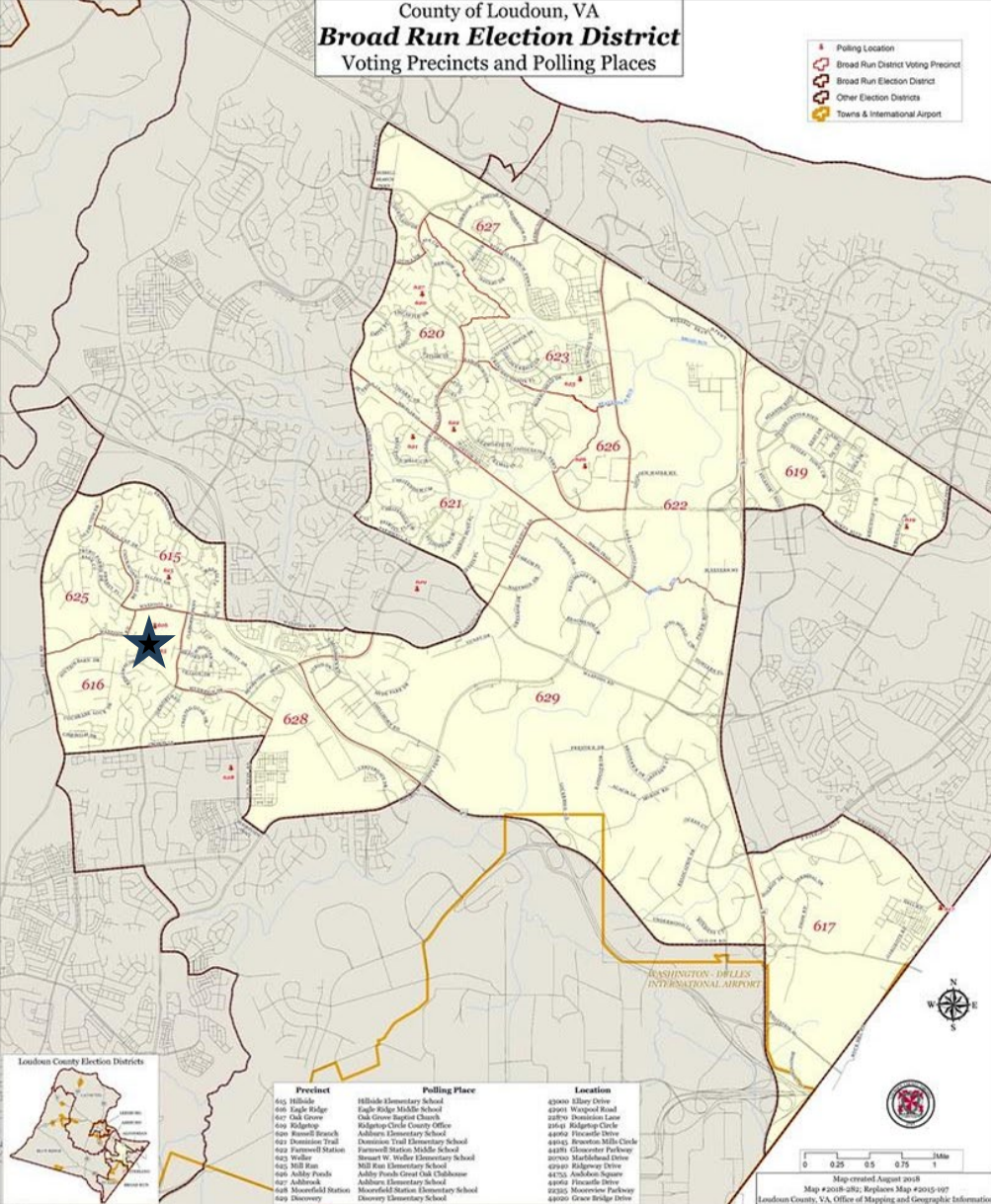


# About Supervisor Glass

- Resident of Ashburn Village for almost 21 years
- Teacher's assistant for LCPS
- Initiatives and Priorities:
  - Increase available affordable housing
  - Ensure our teachers and students are supported and able to maintain our standard of excellence
  - Improve transportation in all aspects (vehicle, public, pedestrian, bicycle)





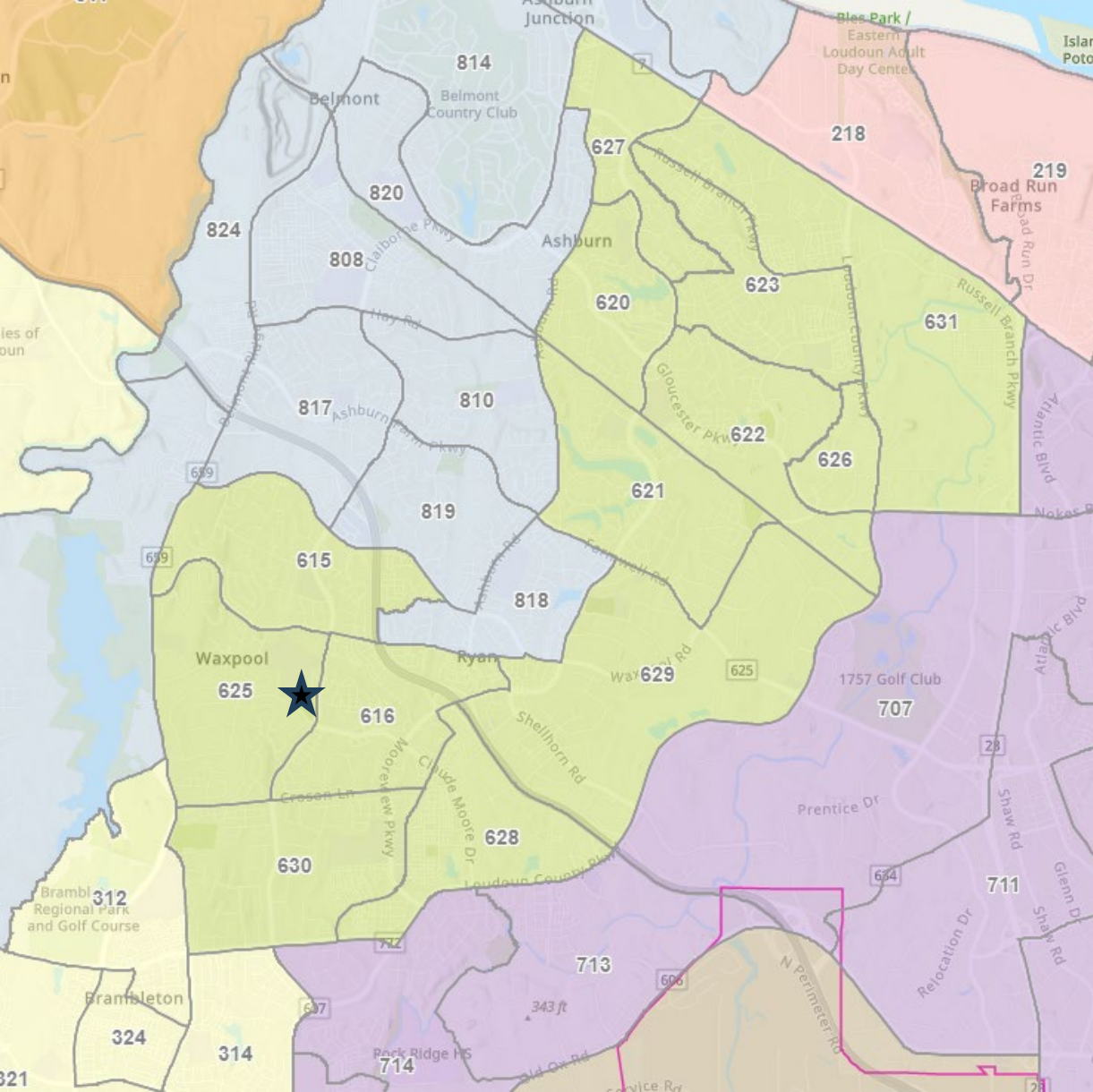


# About Broad Run

- Ashburn Village, Beaumeade Circle, Broadlands, Dulles Town Center, Kincora, Loudoun Station, Oak Grove (near Herndon), One Loudoun
- 3 Metro Station areas
  - Ashburn, Loudoun Gateway, Innovation Center
- 3 Sheriff Station patrol areas
- 6 Fire Station response areas
- 5 Public Parks
- 33 Public School attendance zones
- Majority of Loudoun's Data Centers
- Population of approximately 53,000
- Most of Loudoun's commercial tax revenue**

# Redistricting

- Board adopted redistricting plan on June 7, 2022
- Board of Supervisors and School Board
- Broadlands will remain in the Broad Run District (green)
- New Broad Run Population (2020): 52,981
- New districts take effect January 1, 2024, after the 2023 November election.
- [Loudoun.gov/Redistricting](https://Loudoun.gov/Redistricting)



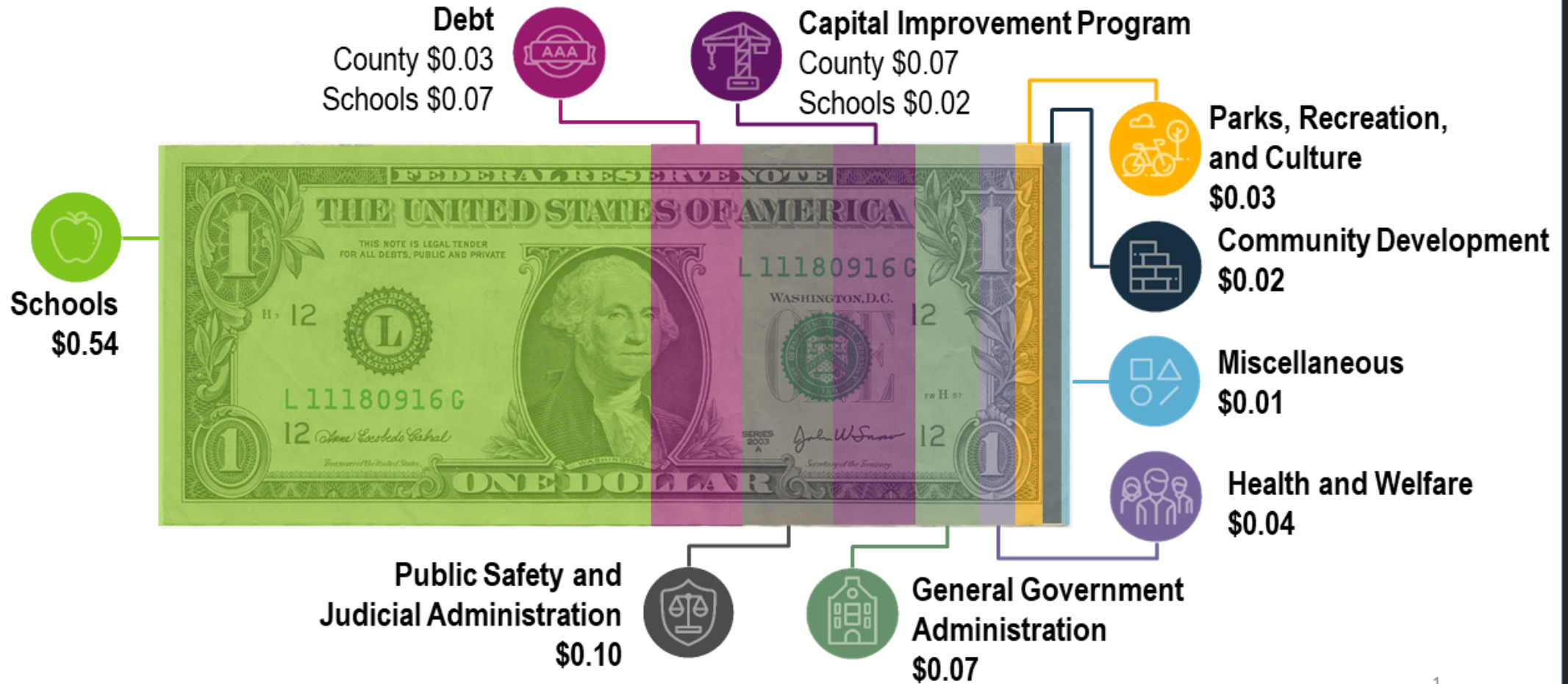
# FY 2024 Budget and Tax Rate

- Board approved budget on April 4
- \$4.2 Billion
  - 63% for LCPS, 37% for county government
  - Crisis Receiving and Stabilization Center
  - Transportation and community construction
    - Belmont Ridge Road and Croson Lane widening projects
  - Funds needed staff members in several departments
- FY 2024 Real Estate Tax Rate:
  - 0.875¢ per \$100 value
  - Due to rising assessments, likely a tax increase
  - Appeal your assessment: [Loudoun.gov/99/Commissioner-of-the-Revenue](https://loudoun.gov/99/Commissioner-of-the-Revenue)



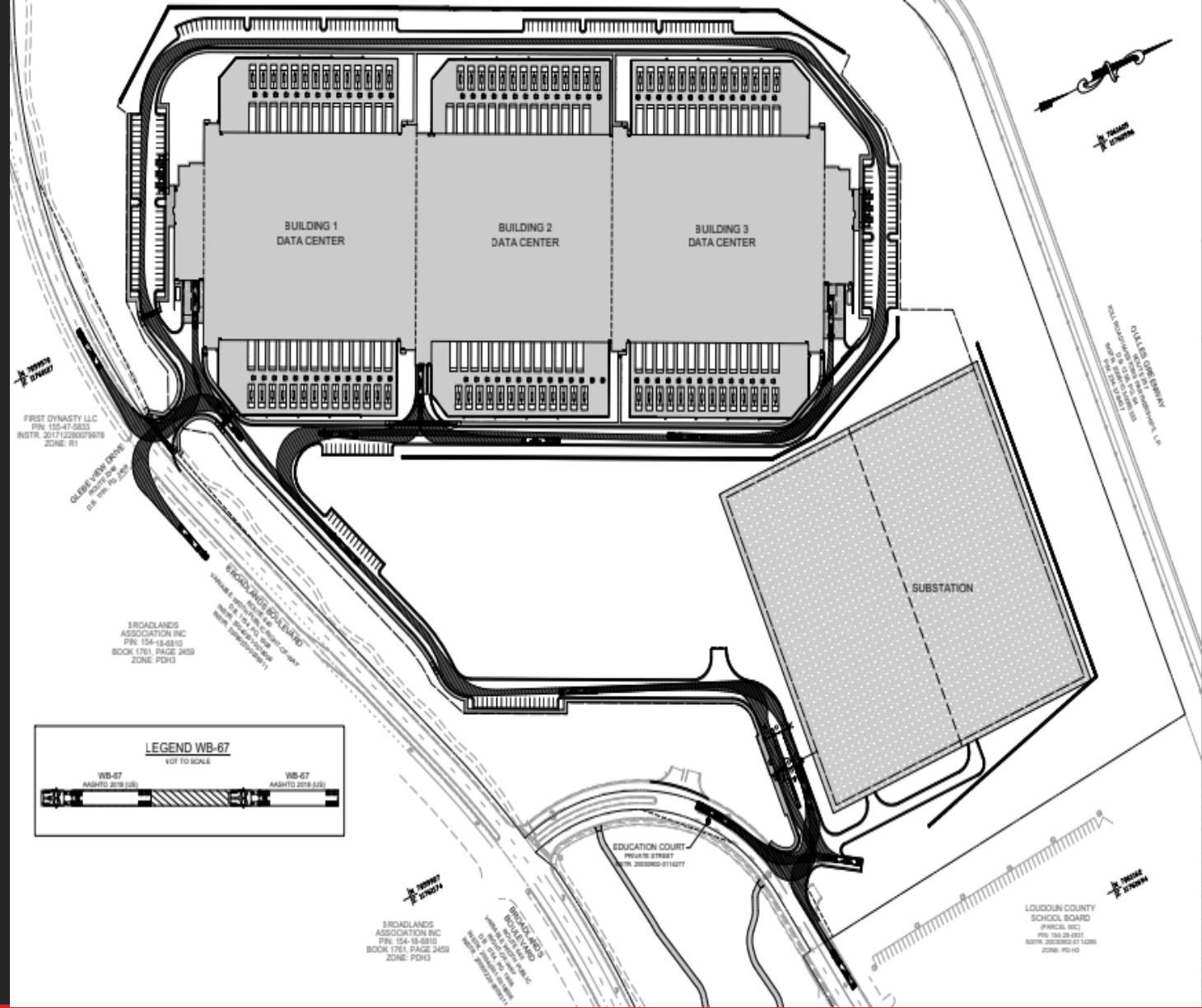
# Your Tax Dollar at Work

## FY 2024 Adopted Budget



# Hyde Park Parcel

- 57.6 acres located at the intersection of Belmont Ridge Road and Broadlands Boulevard
- Zoned planned development - office park
- Sold for \$119 million January 2023 to CyrusOne Data Centers
- CyrusOne Broadlands data center site plan submitted two weeks ago





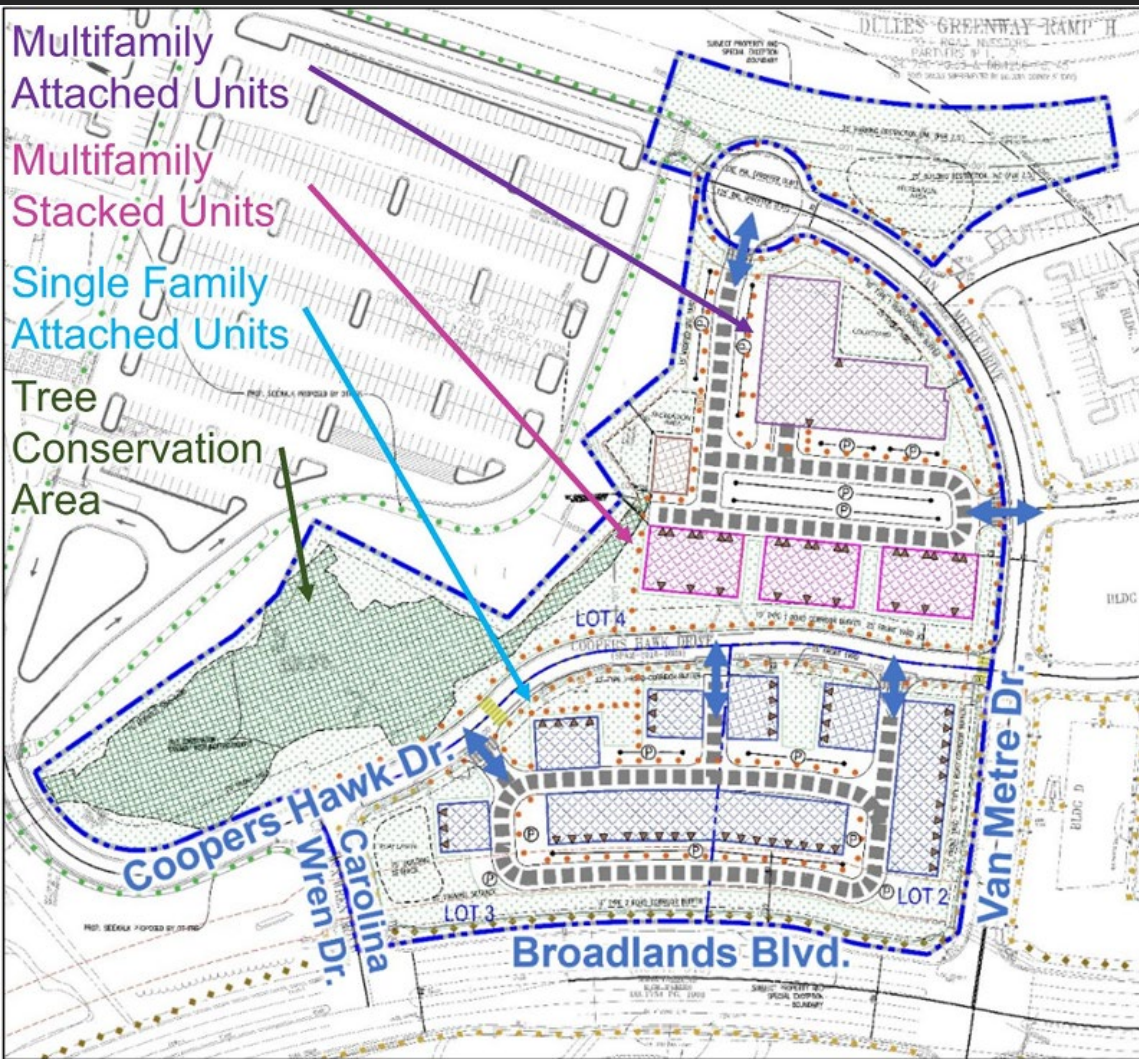
# Tillett's View

- Located at the intersection of Belmont Ridge Road and Waxpool Road
- Application to rezone approximately 50 acres from single family residential and rural commercial to single family and townhouse/multifamily residential
- To construct:
  - 103 single family units
  - 156 townhouse units
  - 148 stacked condo units
- Appeared at the July 25 Planning Commission where it was forwarded to a future work session





# Broadlands Section 104 Rezoning



- Broadlands Boulevard and Van Metro Drive
- Rezone 10 acres from office and industrial to residential
  - To construct up to 136 units (45 townhouses, 27 condo units and 64 apartment units)
- Appeared before the Planning Commission June 27 Public Hearing
  - Forwarded to Planning Commission Work Session in fall
  - More review and negotiations with the applicant





# Ashburn Recreation and Community Center

- Construction of 117,000-square-foot
- Broadlands Boulevard next to Clyde's
- Features:
  - Two pools, gymnasium, classrooms, running track
- Current status:
  - Structural steel installation completed April 25, 2023
  - Estimated completion summer 2025
- [Loudoun.gov/5261](https://loudoun.gov/5261)



# Belmont Ridge Road Widening



- Widening from Truro Parish Drive to Croson Lane
  - From two lanes to four lanes divided
- Current status:
  - Construction began spring 2022
  - Portions of future southbound lanes between Turo Parish Drive and Alford Road have been paved
- Expected completion by summer 2024
- [Loudoun.gov/5332](https://loudoun.gov/5332)

# Croson Lane Widening

- Claiborne Parkway to Old Ryan Road
- 2 lanes to 4 lanes divided
- Provide missing sidewalk (north side) and shared use path (south side)
- Current Status
  - Design at 30%
- Approved in 2019
- Public information meeting was held on April 20, 2023
- Construction projected to begin in 2026
- [Loudoun.gov/CrosonLaneWidening](https://loudoun.gov/CrosonLaneWidening)



# Croson Lane Widening







# Traffic Calming on Ridgeway Drive

- Speed humps placed
- “Watch for Children” signs placed
- Traffic calming votes not approved on:
  - Demott Drive
  - Glebe View Drive
  - Chickacoan Trail Drive
- 5 years before next study
- [Loudoun.gov/5324/Residential-Traffic-Management](https://loudoun.gov/5324/Residential-Traffic-Management)





**Loudoun County**  
VIRGINIA

# SILVER LINE RESOURCES



Metro Station  
Parking



Bus  
Services



Plan Your  
Trip



Metrorail  
Stations



LOUDOUN.GOV/**SILVERLINE**

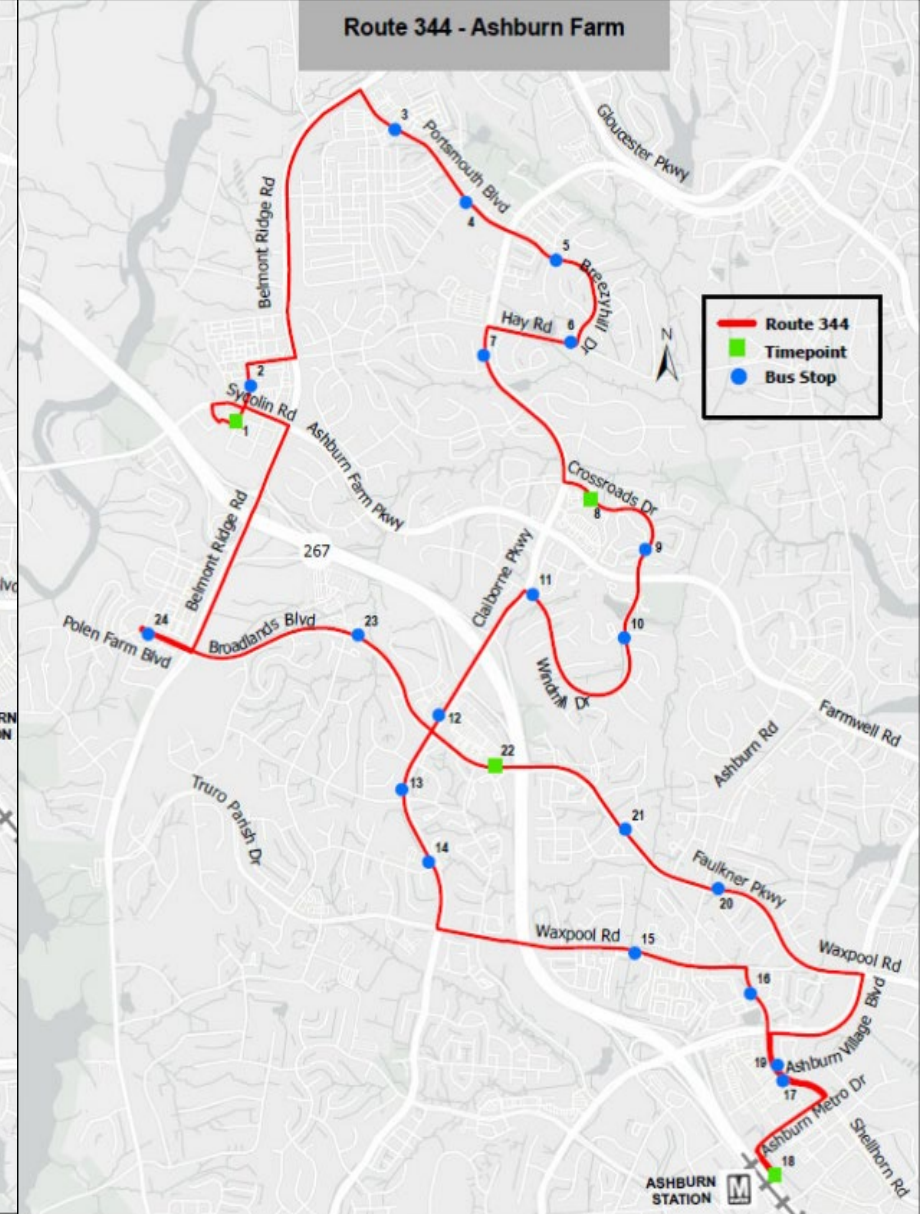
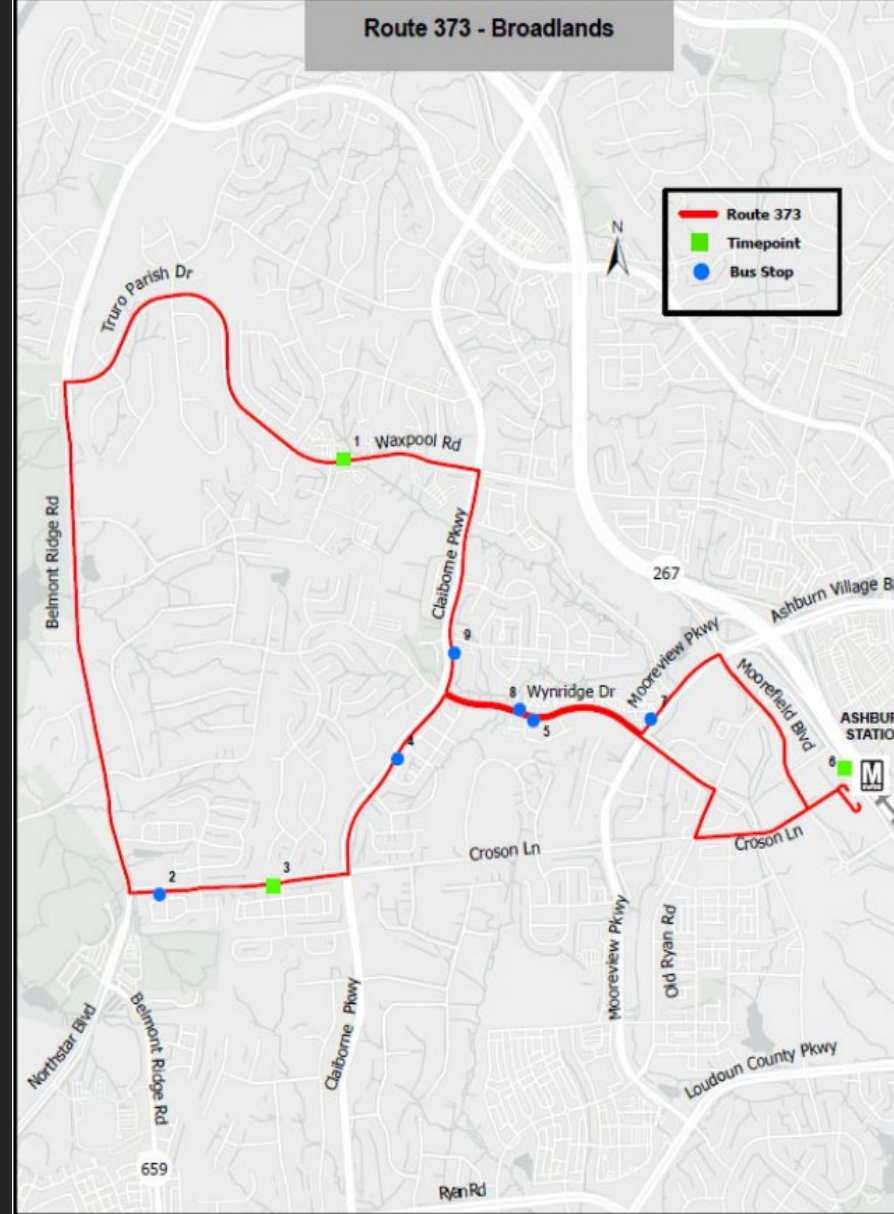
# Metro

- Now open!
- Loudoun County Metro Stations: Ashburn, Loudoun Gateway, Dulles Airport, and Innovation Station Center (across County line)
- Development around Metro:
  - Dense and tall development
  - Utilizes “transit-oriented” design
    - Services and activities close by
    - Getting people out of individual cars
    - Up to 15 story buildings near the Metro station
    - Development around stations will not be completed for many decades
- [Loudoun.gov/Silverline](https://loudoun.gov/Silverline)



# Buses to Metro

- Loudoun Transit offers bus service to Metro
- Broadlands is served by stops on both the “Broadlands” Route 373/374 and the Ashburn Farm Route 343/344.
- [Loudoun.gov/SilverLineBusRoutes](http://Loudoun.gov/SilverLineBusRoutes)





# Upcoming County Meetings

- BOS Business Meetings:
  - 1<sup>st</sup> and 3<sup>rd</sup> Tuesday of every month at 4pm
  - Next Meetings: September 5 and September 19 at 4pm
- BOS Public Hearing:
  - 2<sup>nd</sup> Wednesday of every month at 6pm
  - Next Meeting: September 13 at 6pm
- Finance/Government Operations and Economic Development Committee Meeting:
  - 2<sup>nd</sup> Tuesday of every month at 6pm
  - Next meeting: September 12 at 6pm
- Joint BOS & School Board Committee Meeting:
  - Meets bi-monthly
  - Next meeting: September 12 at 4pm
- Transportation & Land Use Committee Meeting:
  - 3<sup>rd</sup> Wednesday of every month at 5pm
  - Next meeting: September 20 at 5pm
- View all meeting information at: [Loudoun.gov/Meetings](https://loudoun.gov/Meetings)
  - Through the above link, meetings can be watched in real time and all past meeting videos can be viewed
  - Upcoming and past meeting agendas, and supporting documents, can be viewed by clicking “Agenda” next to the associated meeting
- Public comment can occur remotely:
  - Anyone who wants to participate remotely can call 703-777-0200 by noon on the meeting day
  - Instructions on remote participation will be provided to those who sign up ahead of time
  - Speakers will be able to contribute through their computer or phone

# Loudoun County Sheriff's Update and Information

## Catalytic Converter Thefts

Thieves target catalytic converters because many contain precious metals, which are then sold to a scrap yard for cash.

### What Can You Do?

- When possible, park in well-lit areas and close to building entrances.
- Calibrate your car's alarm to set off when it detects vibration.
- Install an overt video surveillance system and place the camera facing your vehicle.
- If you have a garage at your house, park your car inside and keep the garage door shut.
- Have the catalytic converter welded to your car's frame or attach a security device.
- Engrave your vehicle identification number (VIN) on the catalytic converter.



- Catalytic converter theft
- Car break ins
- Speeding
- Other community information

**Report suspicious activity to your local law enforcement agency.**



**Loudoun County Sheriff's Office**

Emergency: 9-1-1

Non-Emergency: 703-777-1021



**Leesburg Police Department**

Emergency: 9-1-1

Non-Emergency: 703-771-4500

# Questions?

[Sylvia.Glass@Loudoun.gov](mailto:Sylvia.Glass@Loudoun.gov) | 703-771-5088

[Loudoun.gov/BroadRun](https://www.Loudoun.gov/BroadRun) | [Facebook.com/SylviaBroadRun](https://www.facebook.com/SylviaBroadRun)

[Twitter.com/SylviaBroadRun](https://twitter.com/SylviaBroadRun) | [Instagram.com/SylviaBroadRun](https://www.instagram.com/SylviaBroadRun)