



Loudoun County



V I R G I N I A

WHERE TRADITION MEETS INNOVATION

Supervisor Glass Broadlands Presentation

Supervisor Sylvia R. Glass
Broad Run District
Tuesday, December 9, 2025

Role of a Supervisor

- 9 Supervisors
 - 8 districts of equal population
 - 1 countywide At-Large Chair
 - 4-year, concurrent terms
- Vote on legislative issues & ordinances
- Appropriate money
- Set property tax rates
- Approve land use & development projects
- Represent Loudoun regionally & nationally



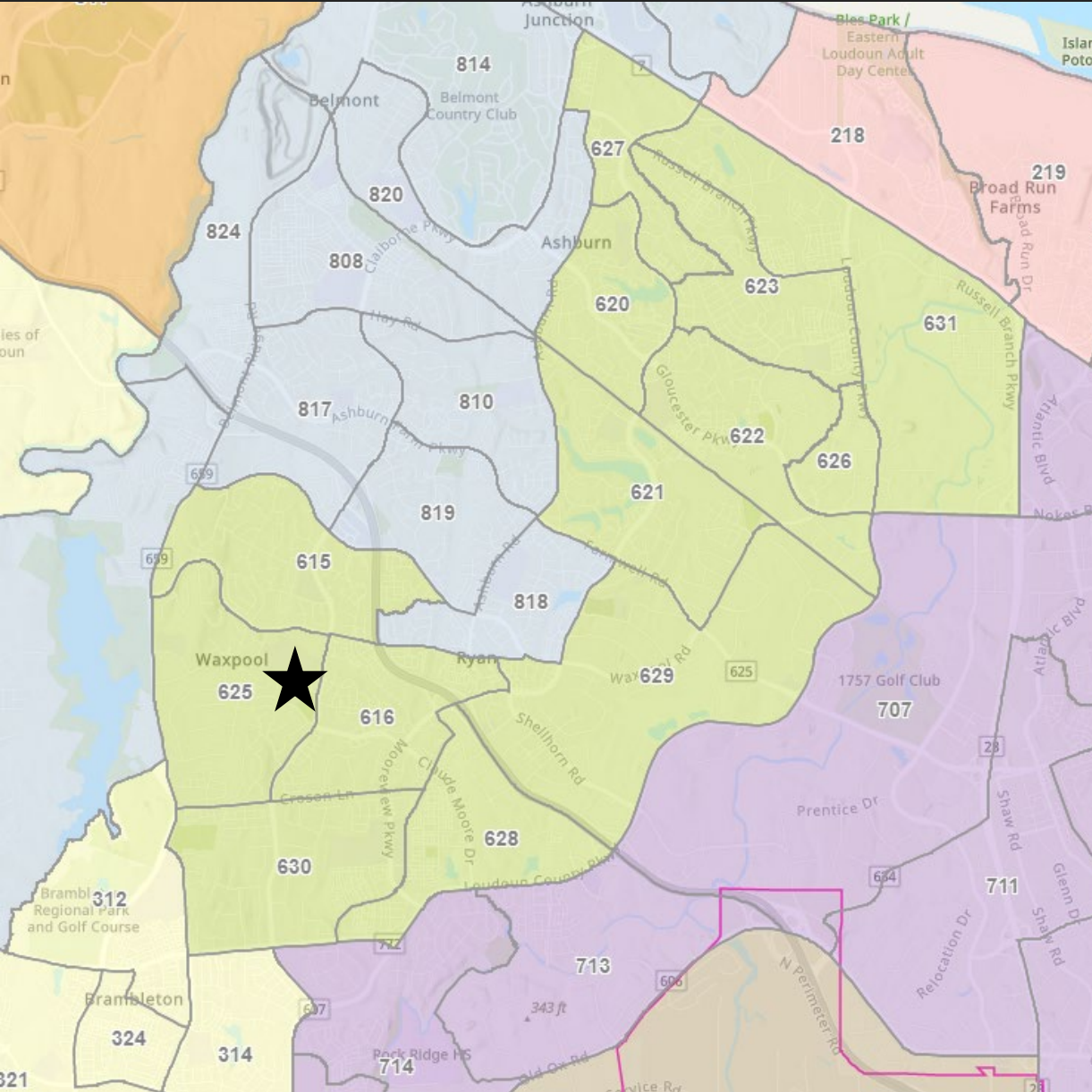
About Supervisor Glass

- Resident of Ashburn for over 25 years
- Teacher's assistant for LCPS
- Initiatives and Priorities:
 - Increase available affordable housing
 - Ensuring schools stay top-notch
 - Improve all aspects of transportation (vehicle, public, pedestrian, bicycle)



Broad Run District

- Ashburn Village, Ashby Ponds, Beaumeade Circle, Broadlands, Kincora, Moorefield Station, Loudoun Station, One Loudoun, Potomac Green, Westmoore
- Ashburn Metro Station
- 3 Sheriff Station patrol areas
- 5 Fire Station response areas
- 7 Public County Parks
- Students attend 20 LCPS Schools
- Broad Run Population (2020): 52,981

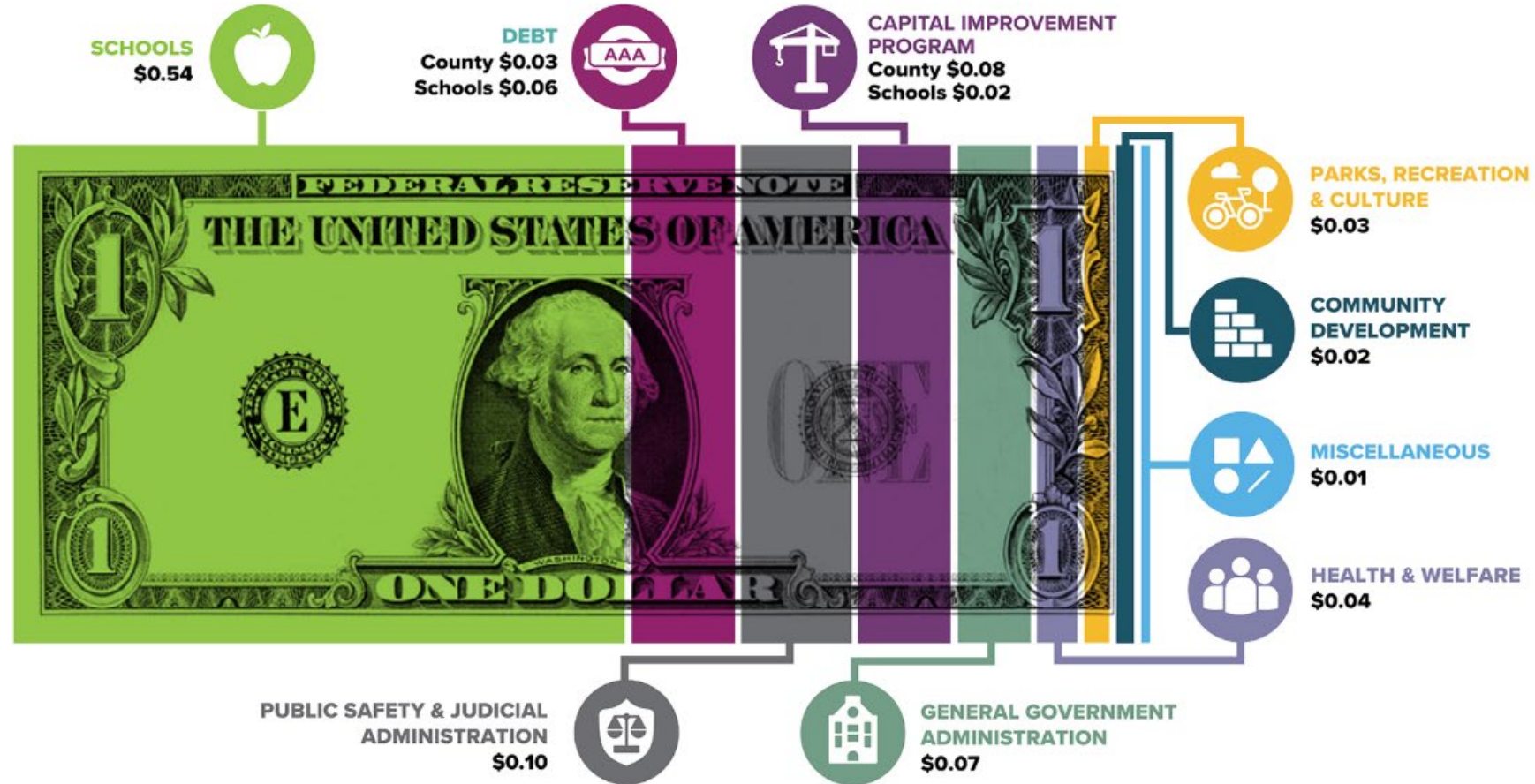


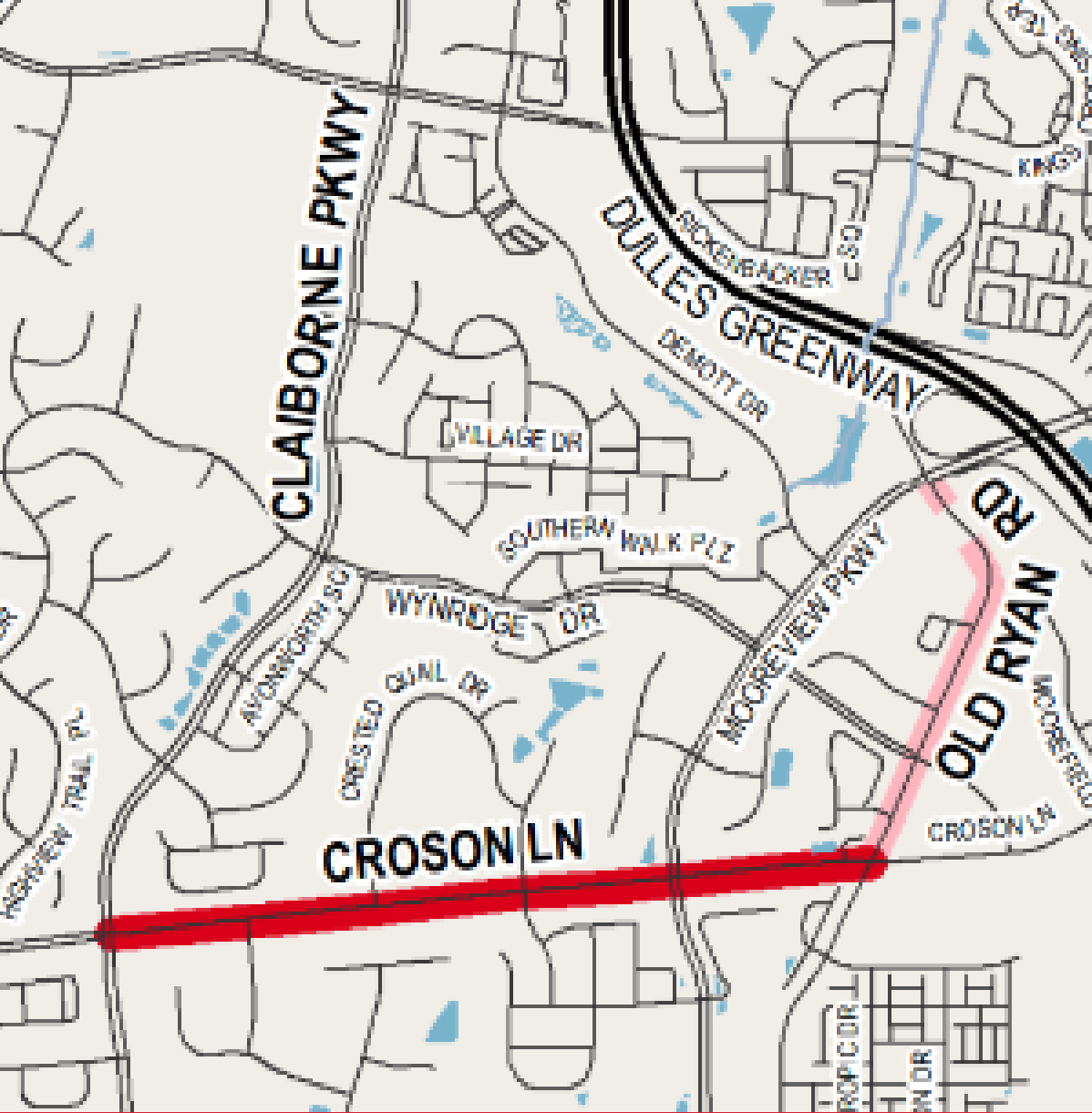
Fiscal Year 2026 Budget & Property Tax Rates

- Board approved budget on April 1, 2025
- FY 2026 runs from July 1, 2025, to June 30, 2026
- \$4.7 billion county and school budget
 - \$17.3 million for affordable housing
 - Transportation and community projects
 - Route 7 Widening from Loudoun County Parkway to Route 28
 - Eastern Loudoun Community Arts Center added to 6-year plan
- FY 2026 Real Property and Personal Property Tax Rates:
 - Real Property (House): \$.805 per \$100 value
 - Personal Property (Car): \$4.15 for 2025 and \$3.09 for 2026 per \$100 value
- Appeal your assessment: [Loudoun.gov/COR](https://loudoun.gov/COR)
- [Loudoun.gov/Budget](https://loudoun.gov/Budget)

YOUR TAX DOLLAR AT WORK

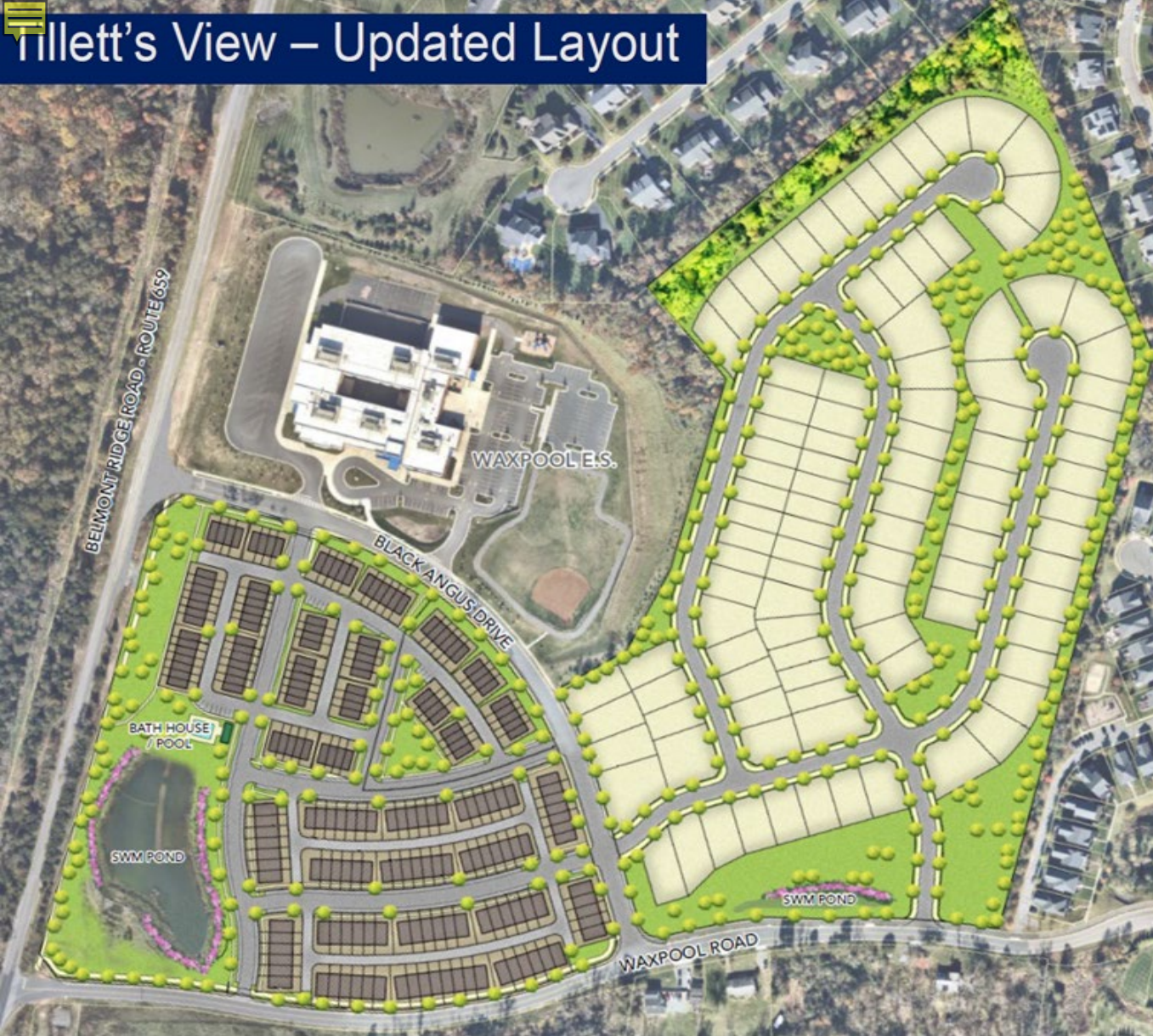
FY 2026 Adopted Budget





Croson Lane Widening

- Claiborne Parkway to Old Ryan Road
- 2 lanes to 4 lanes divided
- Provide missing sidewalk (north side) and shared use path (south side)
- Current Status
 - Design plans are at 90%
 - Environmental investigations and coordination of utility relocation are the next steps
- Construction projected to begin in 2027
- Loudoun.gov/CrosonLaneWidening



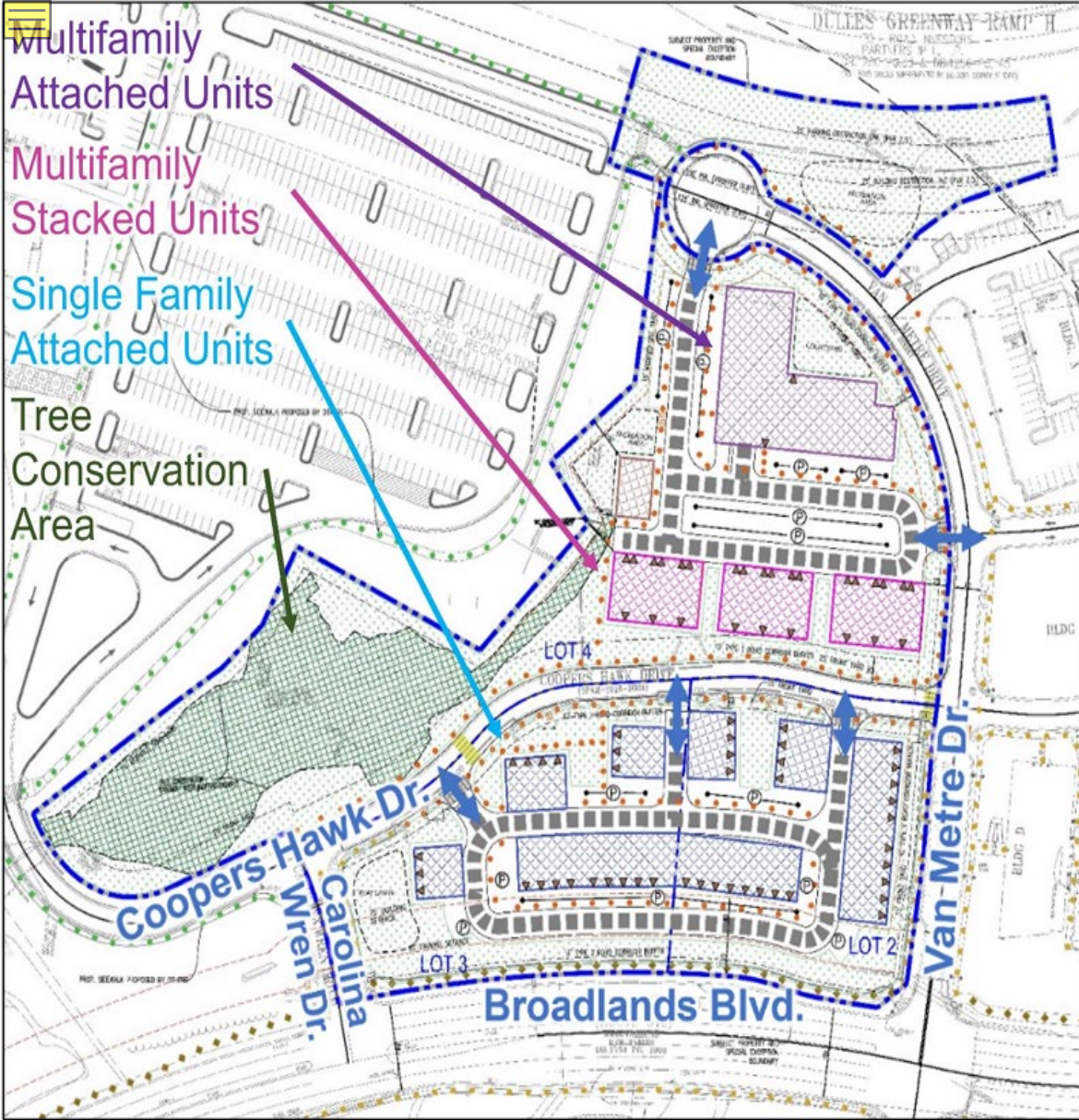
Tillett's View

- 300 total units
 - 101 Single Family, includes 13 ADUs
 - 199 Townhouses, includes 25 ADUs
- Tree clearing and site preparation currently underway
- Townhomes constructed first
- Sidewalk on north and west sides of Waxpool Road from Munday Hill Place to Dobson Court
- Pole mounted speed display signs (signs that flash speed) installed on Waxpool Road between Belmont Ridge Road and Truro Parish Drive
- Discussing with VDOT the reduction of the speed from 30mph to 25 mph

Broadlands Ashburn Metro

- 65 acres of land between Demott Drive, the Dulles Greenway, Waxpool Road and Old Ryan Road
- 843 dwelling units
 - Townhomes and multifamily
- Up to 420,000 square feet of nonresidential development
 - Office and retail space
 - Hotel site
 - Educational spaces
 - George Mason University
 - Loudoun County Public Schools site
- Apartments and nonresidential space to be built near the fire station





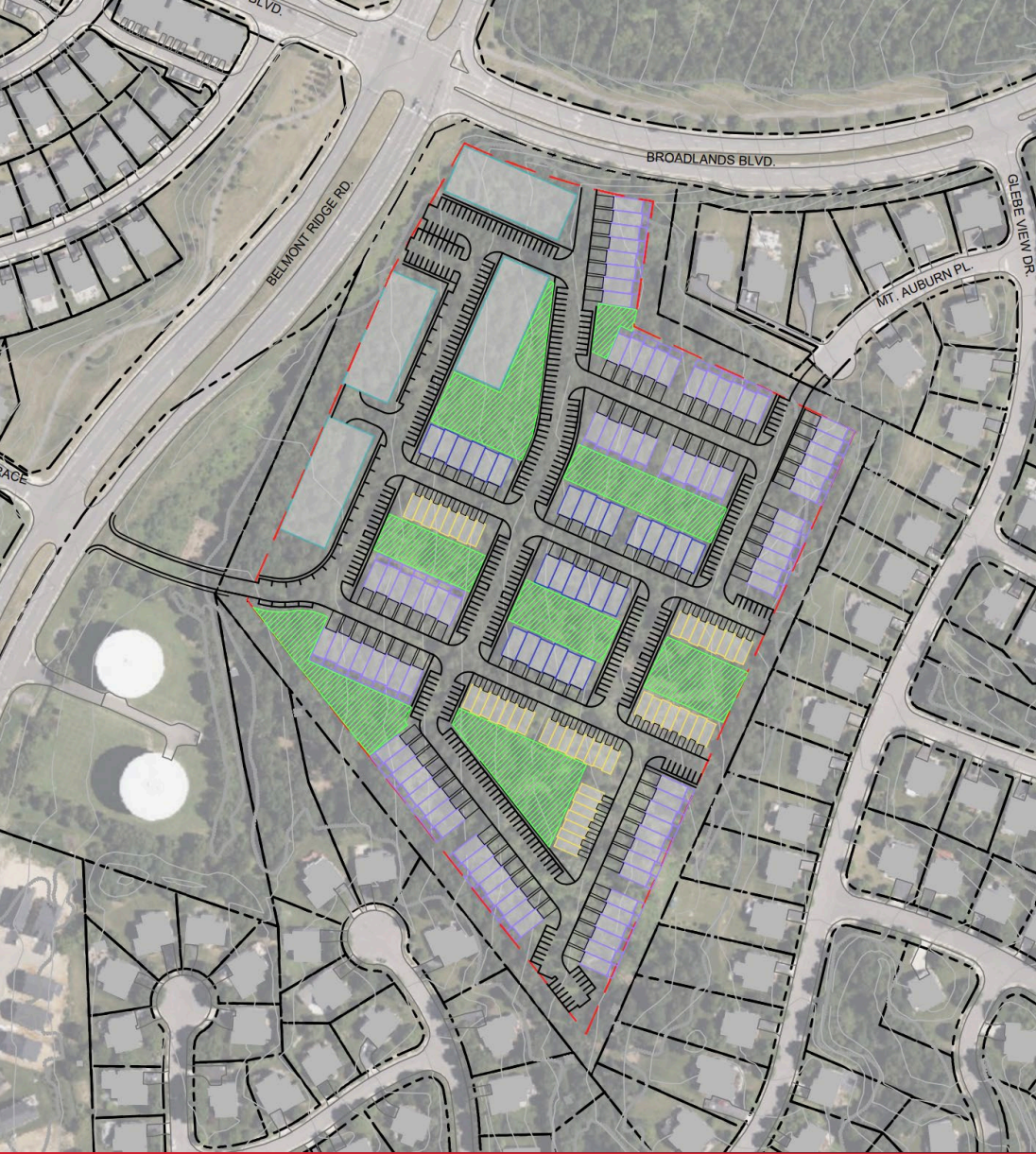
Broadlands Section 104

- Vacant land at Broadlands Boulevard and Van Metre Drive
- 136 housing units
 - 45 townhomes
 - 27 condos
 - 64 apartment units
- Van Metre will construct sidewalks to connect to the now opened Ashburn Recreation and Community Center
- Construction will begin within the next couple years



Broadlands CyrusOne

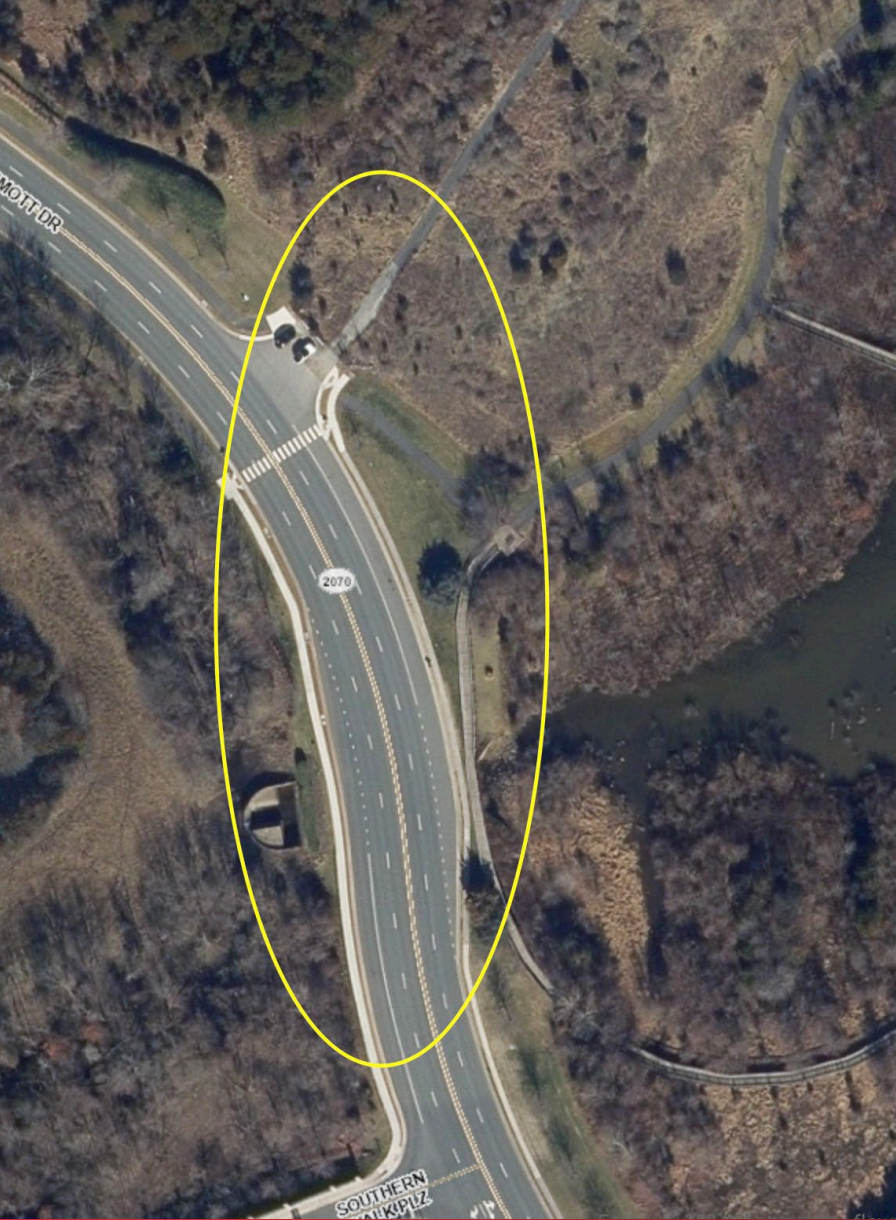
- Construction of 1 million square foot data center
- 50 acres of vacant land located between Belmont Ridge Road, Broadlands Boulevard, Education Court, and the Dulles Greenway
- By-right data center
 - Board approval not required
- Trouble getting power to the site
 - No construction until power resolved
- Working with CyrusOne and the Broadlands HOA to discuss landscaping and architectural enhancements



Broadlands Boulevard Rezoning

- 20-acre parcel at southeast corner of Belmont Ridge Road and Broadlands Boulevard, behind the water towers
- No application officially filed with the county, but one is expected
- Will have public hearings and a vote
- A developer proposed 20 units per acre for a total of 395 units
 - Townhomes, condos, apartments
- Currently having discussions with the developer over density and access to the site (Mount Auburn Place and Belmont Ridge Road)

Community Concerns



- Safety Matters
 - Holding monthly meetings with the Sheriff's Office
 - Lock and do not leave valuables in vehicles
- Sidewalk Maintenance and repairs
 - VDOT has traditionally maintained sidewalks
 - Now says HOAs may be responsible for maintenance
 - VDOT says each section of a community may have different responsibilities based on how the road was transferred from the developer to the VDOT system
- Commercial Vehicle Parking
 - Demott Drive in the turn lane near the wetlands
 - In the process of getting parking restriction signs
 - Once vacant parcel is developed it will become a right turn lane

Upcoming County Meetings

- BOS Business Meetings:
 - 1st and 3rd Tuesday of every month at 4:00pm
 - Next Meetings: December 16 and January 6 at 4:00pm
- BOS Public Hearing:
 - 2nd Wednesday of every month at 6:00pm
 - Next Meeting: December 10 at 6:00pm
- Finance/Government Operations and Economic Development Committee Meeting:
 - 2nd Tuesday of every month at 6:00pm
 - Next meeting: December 9 at 6:00pm
- Joint BOS & School Board Committee Meeting:
 - Meets quarterly at 4:00pm
 - Next meeting: March 23, 2026, at 4:00pm
- Transportation & Land Use Committee Meeting:
 - 3rd Wednesday of every month at 5:00pm
 - Next meeting: December 17 at 5:00pm
- View all meeting information at: [Loudoun.gov/Meetings](https://loudoun.gov/Meetings)
 - Through the above link, meetings can be watched in real time and all past meeting videos can be viewed
 - Upcoming and past meeting agendas, and supporting documents, can be viewed by clicking “Agenda” next to the associated meeting
- Public comment can occur remotely:
 - Anyone who wants to participate remotely can call 703-777-0200 by noon on the meeting day
 - Instructions on remote participation will be provided to those who sign up ahead of time
 - Speakers will be able to contribute through their computer or phone

Questions?

Sylvia.Glass@Loudoun.gov | 703-771-5088

[Loudoun.gov/BroadRun](https://www.Loudoun.gov/BroadRun) | Facebook.com/SylviaBroadRun

X.com/SylviaBroadRun | Instagram.com/SylviaBroadRun